





TAOEC26001170402

2026 02 09

2

4

		SGS ID	
SN1	A1	TAO26-0011704-0001.C001	/

(1) 1 mg/kg = 1 ppm = 0.0001%

(2) MDL=

(3) ND = (< MDL)

(4) "-" =

EN 14582:2016 IC



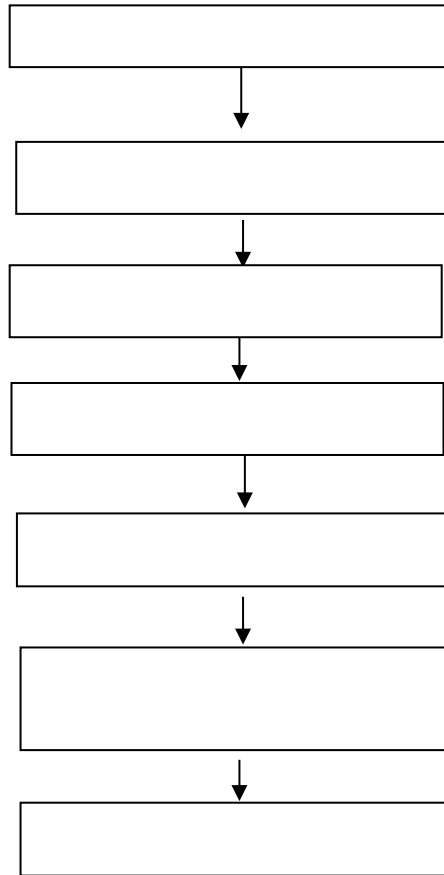


TAOEC26001170402

2026 02 09

3

4



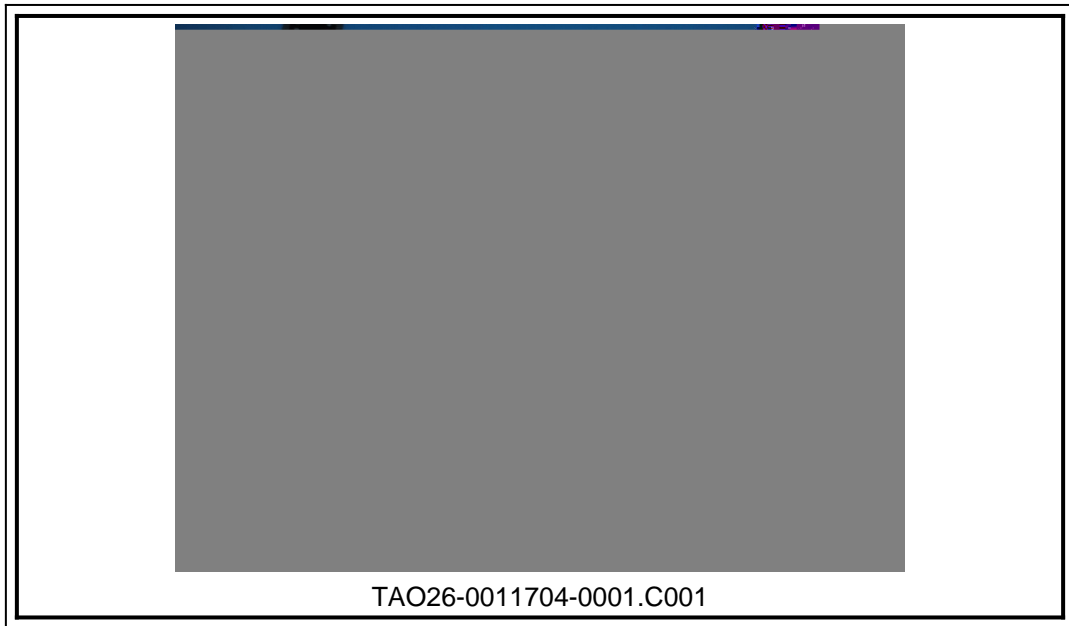


TAOEC26001170402

2026 02 09

4

4



TAO26-0011704-0001.C001

SGS

