

· ° ° " ~ | / fi fl Ł Ł Ź ž ! "  
# \$ % &

Tom Ni ' (  
) " % \* "

SHAEC25029690602\_1

2025 11 24

2



SHAEC25029690602\_1

2025 11 24

3 15

MΦ B C j " © i SVHC Z [ — ~ a § ž « G H →™

Z [ — ~ ID	) -	® -	{   & .	CAS No.	° ± (%)
001	XIX	2 3 ˆ 3 μ ¶ 3 .	1	7439-92-1	3.024



1.

<http://echa.europa.eu/web/guest/candidate-list-table>

2. REACH

2.1

1907/2006 EC 33 57 59  
0.1%

1907/2006 EC 57  
59 (a) 0.1% 1 / / 7 4 (b)  
0.1%

2021 1 5 SVHC 2008/98/EC 0.1% w/w  
SCIP ECHA

2.2

SVHC

31 1907/2006 REACH

2.3

0.1% (w/w) / 1272/2008 CLP  
1907/2006 REACH

(SDS)

- ,1272/2008 CLP
- 1272/2008 CLP,





SHAEC25029690602\_1

2025 11 24

5

15

Z [ — ID	B C ®	Z [ " © ID	SGS B C ID
001	2 3 ' 3 μ ¶ 3 .	A1	SHA25-0296906-0001.C001







) -	A	{   & .	CAS No.	RL (%)
IV	38	Đ Í h	109-86-4	0.050
IV	39	Ä , Ä K Ä ë { , Ä *	-	0.005
IV	40	Ë Æo *	1333-82-0	0.005
IV	41	İ Ä *	513-79-1	0.005
IV	42	Đ Ä *	71-48-7	0.005
IV	43	Ä Ä *	10141-05-6	0.005
IV	44	É Ä *	10124-43-3	0.005
V	45	1,2,3-Ë	96-18-4	0.050
V	46	1,2- Í Ä -Í (C6-8 ) k ( C7)	71888-89-6	0.050
V	47	1,2- Í Ä -Í (C7-11 ) k ( )	68515-42-4	0.050
V	48	1- k -2-	872-50-4	0.050
V	49	Đ Í Đ Ä	111-15-9	0.050
V	50	Ä	302-01-2 /7803-57-8	0.050
V	51	Ä *	7789-06-2	0.005
VI	52	1,2-Í Đ	107-06-2	0.050
VI	53	4,4'-Í Ä k -3,3'-Í Í	101-14-4	0.050
VI	54	2- Æk	90-04-0	0.050
VI	55	f ù k	140-66-9	0.050
VI	56	Ä *	-	0.005
VI	57	Ä *	7778-39-4	0.005
VI	58	Í Đ Í Í	111-96-6	0.050
VI	59	Í Ä Í Æk Đ	117-82-8	0.050
VI	60	Ä *	7778-44-1	0.005
VI	61	Ä *	24613-89-6	0.005
VI	62	j ë {	25214-70-4	0.050
VI	63	o <sup>1</sup> *	13424-46-9	0.005
VI	64	Ä <sup>1</sup> *	6477-64-1	0.005
VI	65	Ä <sup>1</sup> *	15245-44-0	0.005
VI	66	N,N-Í k Đ	127-19-5	0.050
VI	67	Æo Ä *	49663-84-5	0.005
VI	68		77-09-8	0.050
VI	69	Æo Ä *	11103-86-9	0.005
VI	70	Ä <sup>1</sup> *	3687-31-8	0.005
VI	71	Æo Ä *	-	0.005
VII	72	C.I.Ç ú <sup>2</sup> 26§	2580-56-5	0.050
VII	73	C.I.Ç ú 3§	548-62-9	0.050
VII	74	Ë Đ Í Í (TEGDME)	112-49-2	0.050
VII	75	Đ Í Í (EGDME)	110-71-4	0.050
VII	76	4,4'-Í (Í Ä k )Í ( )	90-94-8	0.050
VII	77	4,4'-Í (Í Ä k )-4''- Ä k Ë §	561-41-1	0.050
VII	78	Ë Æo Í *	1303-86-2	0.005





SHAEC25029690602\_1

2025 11 24

10

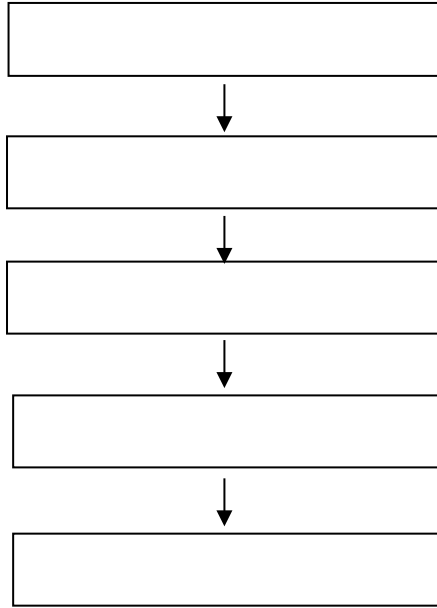
15

	) -	A	{   & .	SAS No.	RL (%)
	VXI	130	Å Æ o 1 *	1317-36-8	0.005
	VIII	117	Ç È É Ä 1 *	12036-76-9	0.005
	VIII	118	È Æ o È 1 *	1314-41-6	0.005
	VIII	119	Ì Ä 1 *	12060-00-3	0.005
	VIII	120	Ì Ä 1 *	12626-81-2	0.005
	VIII	121	Æ k Ð Ä	625-45-6	0.050
	VIII	122	1,2- Æ	75-56-9	0.050
IX	132	VIII	123 Í Ç È Î Ä N, M-Í k	68-12-2	0.050
	VIII	124	N- k Ð	79-16-3	0.050
IX	135	VIII	125 3 - ® ' P a ÿ* Í Ä k k	776297-69-9	0.050
IX	136	VIII	126 -Ä k	97-56-3	0.050
	VIII	127	2-Ä k	95-53-4	0.050
IX	134	VIII	128 3 - ® ' P a ÿ* È Ä	72629-94-8	0.050
	VIII	129	É Ä È Æ o È 1 *	12065-90-6	0.005
	VIII	130	1 *	8012-00-8	0.005
	VIII	131	1 j Ä *	68784-75-8	0.005
	VIII	132	Ä 1 *	11120-22-2	0.005
	VIII	133	Í Ç È Î É Ä 1 *	62229-08-7	0.005
	VIII	134	È Ð k 1 *	78-00-2	0.005
	VIII	135	É Ä È Æ o È 1 *	12202-17-4	0.005
	VIII	136	Í Ä	307-55-1	0.050
	VIII	137	Ç È Î Ä 1 *	1319-46-6	0.005
	VIII	138	Í Ç È Î Ä 1 *	12141-20-7	0.005
	IX	139	4- k ( ) Ð Æ k	-	0.050

) -	A	{   & .	CAS No.	RL (%)
XII	157	2- ö Ę -2-k -4,6-Í k (UV-320)	3846-71-7	0.050
XII	158	Í k - (2-Đ k k k Đ Ā ) (DOTE)	15571-58-1	0.050
XII	159	o *	7790-79-6	0.005
XII	160	É Ā *	10124-36-4 /31119-53-6	0.005
XII	161	Í k - (2-Đ k k k Đ Ā ) (DOTE) ÿ h k -Ę (2-Đ k k k Đ Ā ) (MOTE) j {	-	0.050
XIII	162	1,2- Í Ā ,Í (C6-10) k / 1,2- Í Ā , Í Í Í ,Ñ i Í Ā Í 0.3	-	0.050
XIII	163	5-Í k -2-(2,4-Í k -3- -1-k )-5- k -1,3-Í [1]b 5-Í k -2-(4,6-Í k -3- -1-k )-5- k -1,3-Í [2][ [1]ÿ [2] Ñ ° j h 3 Ñ ° ]	-	0.050
XIV	164	1,3- Ā »	1120-71-4	0.050
XIV	165	2,4-Í k -6-(5- ö Ę -2-k † (UV-327)	3864-99-1	0.050
XIV	166	2-(2H- ö Ę -2-k )-4-( k )-6-( k ) (UV-350)	36437-37-3	0.050
XIV	167	Ā k	98-95-3	0.050
XIV	168	Ā K Ñ Ā Ÿ Ā	-	0.050
XV	169	ö (a)	50-32-8	0.050
XVI	170	4,4'- Í k ( A)	80-05-7	0.050
XVI	171	4- k ( )	-	0.050
XVI	172	Ā (PFDA)K Ñ Ā Ÿ Ā	-	0.050
XVI	173	f k	80-46-6	0.050
XVII	174	-1- Ā K Ñ Ā	-	0.050
XVIII	175	( Í ) ( Ę Ę d 3 Ñ ° )	-	0.050
XVIII	176	ö (BaA)	56-55-3	0.050
XVIII	177	Ā Ā *	10325-94-7	0.005
XVIII	178	Í Ā *	513-78-0	0.005
XVIII	179	Æo *	21041-95-2	0.005
XVIII	180	(CHR)	218-01-9	0.050
XVIII	181	1,3,4- Í -2,5-Í É I Ÿ 4- k j : { (RP-HP)[ Ž Ÿ 4- k ¾ 0.1%]	-	0.050
XIX	182	1,2,4- Ę Ā ( Ę Ā )(TMA)	552-30-7	0.050
XIX	183	ö (g,h,i) (Í )(BPE)	191-24-2	0.050
XIX	184	k Æ (D5)	541-02-6	0.050
XIX	185	Í Ā Í (DCHP)	84-61-7	0.050
XIX	186	Æo *	12008-41-2	0.005

) -	A	{   & .	CAS No.	RL (%)
XIX	187	Í k Æ (D6)	540-97-6	0.050
XIX	188	Đ Í (EDA)	107-15-3	0.050
XIX	189	1	7439-92-1	0.005
XIX	190	k Ê Æ (D4)	556-67-2	0.050
XIX	191	o Ę	61788-32-7	0.050
XX	192	1,7,7-Ę k -3-( k Ī k ) [2.2.1] -2-(3-Ī k )	15087-24-8	0.050
XX	193	4,4'-(1,3-Í k k )Í (1,3-DMBBP)	6807-17-6	0.050
XX	194	o (k) (BkF)	207-08-9	0.050
XX	195	(FLT)	206-44-0	0.050
XX	196	(PHE)	85-01-8	0.050
XX	197	(PYR)	129-00-0	0.050
XXI	198	2,3,3,3-Ę -2-( Æk ) Ä K Ñ Ä Ÿ k o { ( h 3 Ÿ ° )}(HFPO-DA)	-	0.050
XXI	199	2- Æk Đ k Đ Ä	110-49-6	0.050
XXI	200	4- k (PTBP)	98-54-4	0.050
XXI	201	Ę (4- k k b Ÿ )Í Ä (TNPP)	-	0.050
XXII	202	2- k -2-Í k Ä k -4'- k k	119313-12-1	0.050
XXII	203	2- k -1-(4- Ę k k )-2- k -1-	71868-10-5	0.050
XXII	204	Í Ä Í	71850-09-4	0.050
XXII	205	Ä K Ñ Ä	-	0.050
XXIII	206	1-Đ k	1072-63-5	0.050
XXIII	207	2- k	693-98-1	0.050
XXIII	208	f k Ä	94-26-8	0.050
XXIII	209	(Đ k )Í k **	22673-19-4	0.050
XXIV	210	Ę Đ Í Í	143-24-8	0.050
XXIV	211	Í X Ä Í k K Ñ Í k ( Æk ) { **	-	0.050
XXV	212	1,4-Í Æ	123-91-1	0.050
XXV	213	Í Í (BMP); Ę (TBNPA); 2,3-Í -1- (2,3-DBPA)	-	0.050
XXV	214	K Ñ 3 3	-	0.050
XXV	215	B	77-40-7	0.050
XXV	216	Í	111-30-8	0.050
XXV	217	i o (MCCP)	-	0.050
XXV	218	Ä Ä *	13840-56-7	0.005
XXV	219	f Í k K Ñ 3 (PDDP)	-	0.050
XXVI	220	(±)-1,7,7-Ę k -3-[(4- k k )Í k ]Í [2.2.1] -2- b 3 Ÿ / Ñ ° (4-MBC)	-	0.050
XXVI	221	2,2'-Í k -(4- k -6- k ) (DBMC)	119-47-1	0.050

) -	A	{   & .	CAS No.	RL (%)
XXVI	222	S-(Ē [5.2.1.0'2,6] -3- -8( 9)-k ) O-( k k 2-Đ k k ) O-( k k 2-Đ k k ) Ī Ē Ā	255881-94-8	0.050
XXVI	223	Đ k -Ē (2- Āk Đ Āk )	1067-53-4	0.050
XXVII	224	N- k	924-42-5	0.050
XXVIII	225	1,2- (2,4,6-Ē Āk ) Đ	37853-59-1	0.050
XXVIII	226	Ē A	79-94-7	0.050
XXVIII	227	S	80-09-1	0.050
XXVIII	228	Ē Āo Ī *	13701-59-2	0.005
XXVIII	229	Ē Ī Ā (2-Đ k k )	-	0.050
XXVIII	230	f k Ā	4247-02-3	0.050
XXVIII	231	Ē Ā	108-78-1	0.050
XXVIII	232	Ā K Ñ Ā	-	0.050
XXVIII	233	k Ÿ k { *	-	0.050
XXIX	234	(4- k )	80-07-9	0.050
XXIX	235	Ī k (2,4,6-Ē k k ) Āo	75980-60-8	0.050
XXX	236	2,4,6-Ē k	732-26-3	0.050
XXX	237	2-(2'- k -5'- k k ) o Ē (UV-329)	3147-75-9	0.050
XXX	238	2-(4- k k )-2-(Ī k Ā k )-1-(4- k )- 1- (PI-379)	119344-86-4	0.050
XXX	239	u Ē (UV-326)	3896-11-5	0.050
XXX	240	2- k j e Ÿ k o : {	-	0.050
XXXI	241	§ Āo Ī	80-43-3	0.050
XXXI	242	Ā Ē	115-86-6	0.050
XXXII	243	6-[(C10-C13)- k -( , e Ÿ )-2,5-Ī Ā -1-k ] Ā	2156592-54-8	0.050
XXXII	244	O,O,O-Ē k Ē Ā	597-82-0	0.050
XXXII	245	k Ē Ā	107-51-7	0.050
XXXII	246	Ē	338-83-0	0.050
XXXII	247	Ē k Ē Ā Ÿ k o k { j : {	192268-65-8	0.050
XXXIII	248	k Ē (Ē k Ā k )	17928-28-8	0.050
XXXIII	249	k Ē Ā	141-62-8	0.050
XXXIII	250	ú 51	-	0.050
XXXIV	251	Ī Đ (DBDPE)	84852-53-9	0.050
/	252	V Ī	108-46-3	0.050
/	253		110-54-3	0.050
/	254	4,4'-Ī k Ī (BPF)	620-92-8	0.050
/	255	4,4'-[2,2,2-Ē -1-(Ē k ) Ī Đ k ] (BPAF)K Ñ Ā	-	0.050



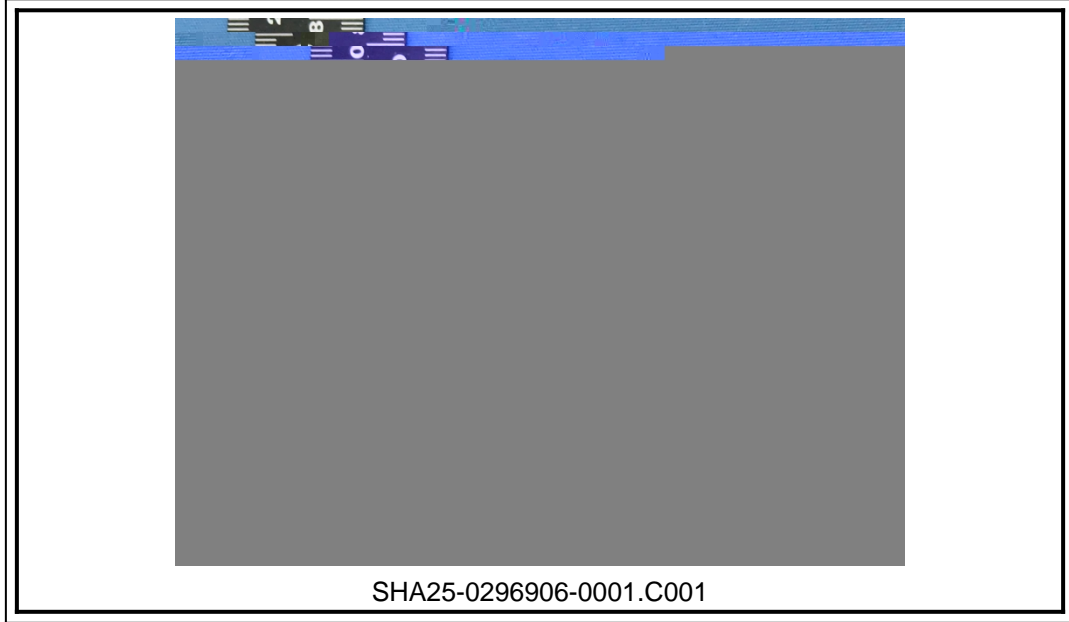


SHAEC25029690602\_1

2025 11 24

15

15



Ö z I SGS Ü Ü ½  
\*\*\* \*\*