



LF0206~LF0208

LOW FORWARD VOLTAGE RECTIFIER

Preliminary

Rev.0.2

DESCRIPTION:

- ✧ Plastic package has underwriters laboratories flammability classification 94V-0
- ✧ Glass passivated junction
- ✧ For surface mounted applications in order to optimize board space
- ✧ Lead free in compliance with EU RoHS 2011/65/EU directives
- ✧ Low forward voltage

MECHANICAL DATA

- ✧ Case: JEDEC DO-214AA molded plastic
- ✧ Terminals: Solder plated, solderable per J-STD-002
- ✧ Polarity: Color band denotes cathode end
- ✧ Weight: 0.1 gram

ABSOLUTE MAXIMUM RATING AND ELECTRICAL CHARACTERISTICS

(Rating at 25 ambient temperature unless otherwise specified.)

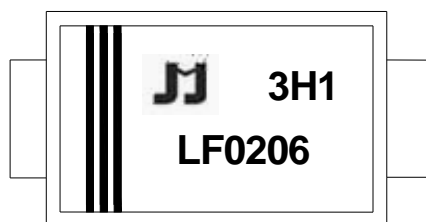
Parameter	Symbol	LF0206
-----------	--------	--------

THERMAL RESISTANCES

Symbol	Parameter	LF0206	LF0208	Unit
$R_{th(j-a)}$	Junction to ambient (note1)	75		/W

Note1 Thermal resistance from junction to ambient mounted on P.C.B. with 4.0 mm x 4.0 mm copper pad areas.

MARKING



LF	Low Forward Voltage Rectifier
02	$I_{F(AV)}=2.0A$
06	$V_{RRM}:600V$

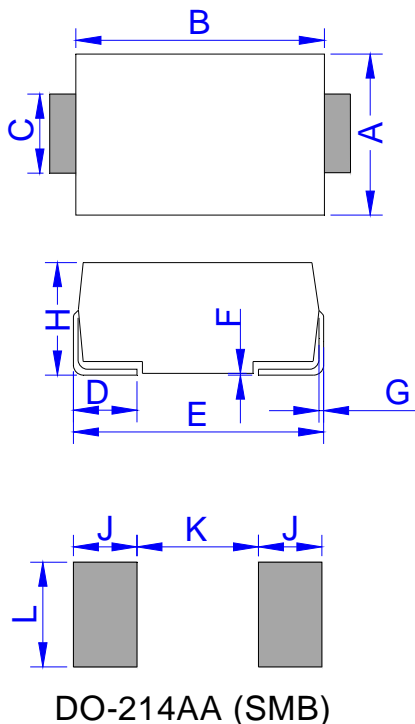
xH1 Month 1 2 3 9 A B C

3x1

2018	2019	2020	2021	2022	2023	2024
H	I	J	K	L	M	N
2025	2026	2027	2028	2029	2030	...
O	P	Q	R	S	T	...

3Hx Batch number

PACKAGE MECHANICAL DATA



Ref.	Dimensions			
	Millimeters		Inches	
	Min.	Max.	Min.	Max.
A	3.30	3.94	0.130	0.155
B	4.30	4.80	0.169	0.189
C	1.90	2.20	0.075	0.087
D	0.95	1.52	0.037	0.060
E	5.20	5.60	0.205	0.220
F	0.051	0.203	0.002	0.008
G	0.15	0.31	0.006	0.012
H	2.10	2.40	0.083	0.094
J	2.20		0.087	
K		2.60		0.102
L	2.30		0.091	

TAPE AND REEL SPECIFICATION-SMB



CHARACTERISTICS CURVE

<p>FIG.1: Typical forward characteristics</p>	
<p>FIG.3: Maximum non-repetitive peak forward surge</p>	

Information furnished in this document is believed to be accurate and reliable. However, Jiangsu JieJie Microelectronics Co.,Ltd assumes no responsibility for the consequences of use without consideration for such information nor use beyond it.