

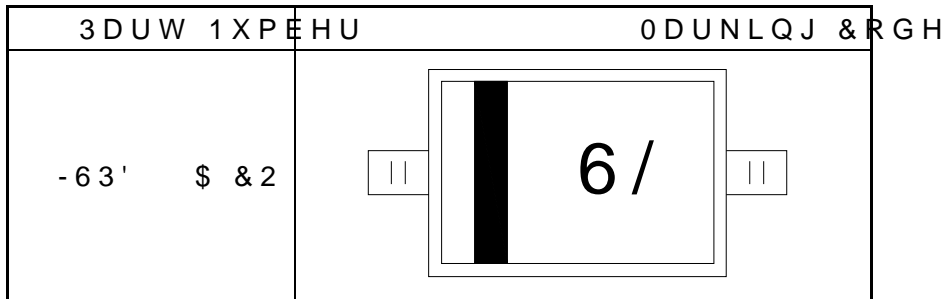




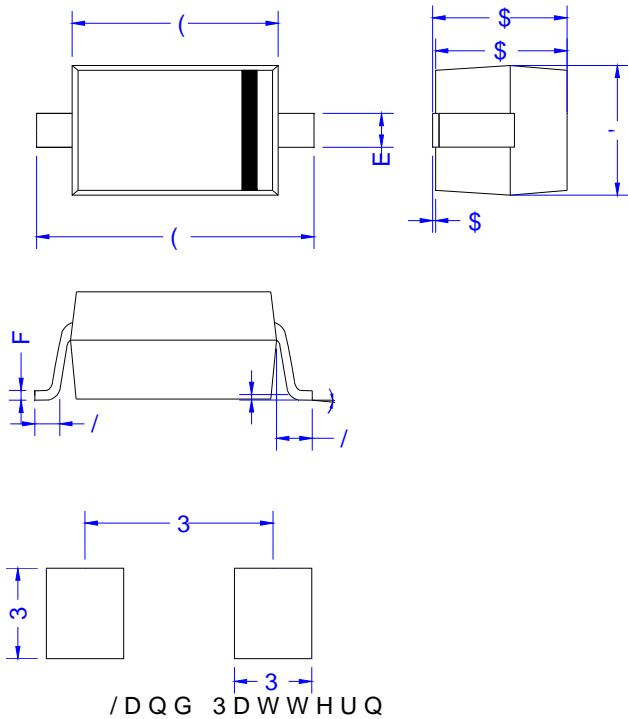
7+(50\$/ 5(6,67\$1&(6

|       |                            |                   |      |
|-------|----------------------------|-------------------|------|
| 6\PER | 3DUDPHWHU                  | -63' \$ & 2       | 8QLV |
| 5WK M | 7KHUPDO UHVLVWDQFH IURP MX | QFWLRQ WR DPELHQW | :    |

0\$5.,1\*



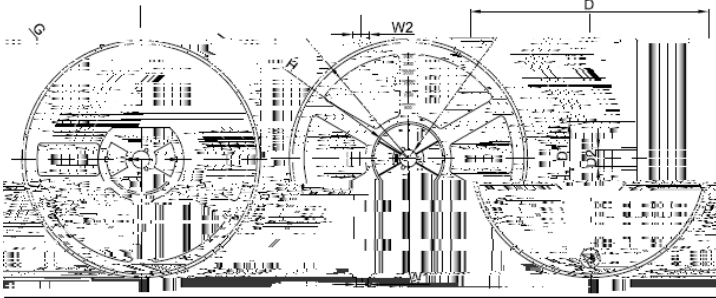
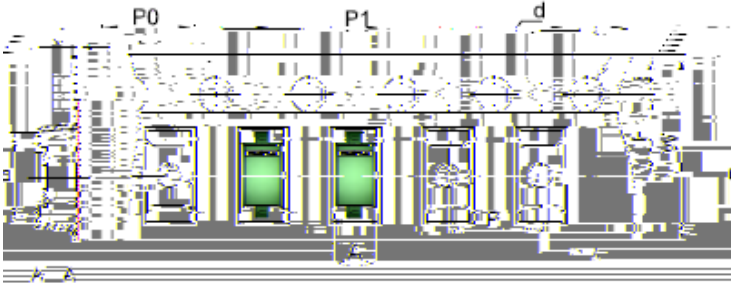
W < ' D , E/ > d



| 6\PER | 0LOOLPHWHUV | ,QFK |     |
|-------|-------------|------|-----|
| 0LQ   | 0D[         | 0LQ  | 0D[ |
| \$    |             |      |     |
| \$    |             |      |     |
| \$    |             |      |     |
| E     |             |      |     |
| F     |             |      |     |
| '     |             |      |     |
| (     |             |      |     |
| (     |             |      |     |
| /     | 5()         | 5()  |     |
| /     |             |      |     |
|       | e           | e    | e   |
| 3     |             |      |     |
| 3     |             |      |     |
| 3     |             |      |     |



d W E Z > ^W /&/ d/KEr^K ríï



| 6\PERO        | 0LOOLPH | HWHUV | ,QF  |
|---------------|---------|-------|------|
|               | 7\S     | 7\S   |      |
| \$            |         |       |      |
| %             |         |       |      |
| &             |         |       |      |
| G             | -       | -     |      |
| (             |         |       |      |
| )             |         |       |      |
| 3             |         |       |      |
| 3             |         |       |      |
| 3             |         |       |      |
| :             |         |       |      |
| '             | -       | -     |      |
| FDUULHU       | WDSH    | LV    | PDGH |
| SRO\FDUERQDWH | UHV     | LQ    | 7KH  |
| DGK*HVL       | YH5LQ   |       | 5    |
| OD\HU         |         |       | 5    |
| SDUWV         | LQ      |       | 5    |
| XQLWV         |         |       |      |
| LQ            | FRORU   | DQG   | PDGH |
| RI            |         |       |      |

3DFNDJLQJ GHVFULSWLRQ

62' SDUWV DUH VKLSSHG LQ WDSH 7KH FDUULHU WDSH LV PDGH IURP D GLVVLSDWLYH FDUERQ ILOOHG SRO\FDUERQDWH UHV LQ 7KH FRYHU WDSH LV DD P XOD WOD HWLYDWHG DGK\*HVL YH5LQ 5

QDWXUH SULPDULO\HFRVIRVILGFRIDGRICHVLYH OD\HU 5 5

VHDODQW DQG DQWUHGWDLKFWBUHGHG SDUWV LQ 5

VWDQGDUG RSWLRQ DUH VKLSSHGRZLWKFP XQLWV


GLDPWHU UHHO 7KH UHHOV DUH FOHDU LQ FRORU DQG PDGH RI

SRO\W HSDVDVFL VWDWLF FRDWHG

KZ Z/E' /E&KZD d/KE

|         |           |        |                    |
|---------|-----------|--------|--------------------|
| 287/,1( | 3\$&.\$*( | 5((/=6 | 48\$17,7< 3(5 5((/ |
| 7\$3,1* | 62'       | ,QFK   | 3&6                |



-LH-LH SURGXFWV DLRUQBQGGVHKDQQHCRQW SXUSXWGLRQDFZLWKR  
OLPLWDWLRQ DIXOLRPRUWLPHGRFVSDQQLCHLNDVKVWDLQLQJ RU Q  
DSSOLFDWLRQV GHYLFHV LQWHQGHG I RU VXUJRWKELDSSDQW  
IDLOXUH RU ODFN IRRQG R V WUKHG SUSRQXFWSPUDRQHDVOX DQMXU\ GHD  
GDPDJH RWKHU WKDQVWWRIRHUWKS UQVSSORFGXFOHGRFXPHQWD  
JUDQWHG E\ -LH-LH WRDGOIREH SUHGXFGVXUKS/RHGHIRBVDQ[SUHVVO  
DSSOLFDEOH -HQLDWGLRQXP-LH-LH VKDQOFQDWPVHRQLEBDBDJHRU D  
SURGXFWV XVHG QQRWSSISUFDWDRQQQVMQGHVIRUWLKILQDSSOLF  
GRFXPHQDWLRQ 7KH-VBOLHDSQRGXFRW-VLHL-VXVHEMUHFWVDQGGFRQ  
XQOHVV RWKHHUZIEVHLHU-ULH  
,QIRUPDWLRQ IXUQXFKRQILQVWKOVLHGMFB DQGEUHDHDFXELDH +RZH  
-LH-LH OLFURHOHFWDVROLFHV&QR UWGSRKQVEEQDHWXHRUFHV RI XV  
FRQVLGHUDWLRQDPRWLVKQKQIXVH EHRQG LW  
,QIRUPDWLRQ PHQWRQDQV LQWXEMHGFRRXWRGRDQFH ZDSDUW IU  
DJUHHPHQW LV VLJQHGFREPSQLVX-ZLHWK WKH DJUHHPHQW  
3URGXFWV DQG LQIRUPDWLRQ SURYLGHGJHQRQWL RIGRFXPHQW  
DVVXPHV QR UHVSRLQLLELOQJWRPHRQWRQVWIKHGSDUKMMV ZKLFK  
XVH RI VXFK SURGXFWV DQG LQIRUPDWLRQ  
7KLV GRFXPHQW LROKZKLFKVVYPDGH LQKL\$SGRFXPHQW VXSHU  
UHSODFHV DOO LQIRUPDWLRQ SUHYLRXVO\ VXSSOLHG  
 LV D UHJLVWHUHGDQWVXGHPDLNORLIFURHOWEWRQLFV  
&RS\ULJKW-LDQJVX -LH-LHRQLFVR&RHFVG 3ULQMMBSYCHG