

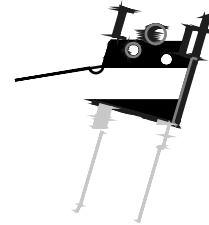


JPUR10006SL EPI PLANAR ULTRAFAST SOFT RECOVERY RECTIFIER

Rev.1.2

DESCRIPTION

- Plastic package has underwriters laboratory flammability classification 94V-0
- Lead free in comply with EU RoHS 2011/65/EU directives
- Low reverse leakage current
- Ultrafast recovery time
- 5th Generation soft fast recovery characteristics
- Epitaxial planar technology
- Low recovery loss



MECHANICAL DATA

- Case: TO-247J-2L molded plastic
- Terminals: Solder plated, solderable per J-STD-002
- Weight:5.75gram

ABSOLUTE MAXIMUM RATING (Rating at 25 ambient temperature unless otherwise specified.)

Parameter	Symbol	JPUR10006SL	Unit
Maximum repetitive peak reverse voltage	V_{RRM}	600	V
Maximum DC blocking voltage	V_{DC}	600	V
Average forward current at $T_C=130$	$I_{F(AV)}$	100	A
Peak forward surge current: 10ms single half sine-wave superimposed on rated load	I_{FSM}	800	A
Junction temperature and storage temperature range	T_j, T_{stg}	-55 to +175	

ELECTRICAL CHARACTERISTICS(Rating at 25 ambient temperature unless otherwise specified.) -

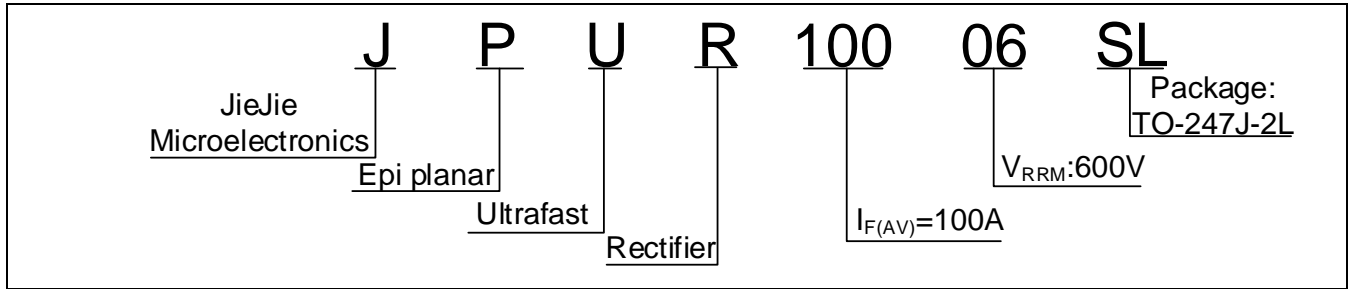
Parameter	Test Condition	Symbol	Min	Max	Typ	Unit
Reverse current	$V_R=600V, T_j=25$ $V_R=600V, T_j=150$	I_R	-	-	5	μA

ELECTRICAL CHARACTERISTICS

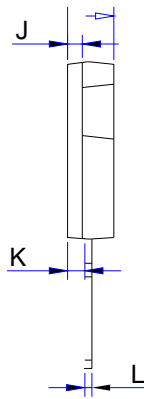
(Rating at 25 ambient temperature unless otherwise specified, continued)

Parameter		Symbol	Min.	Typ.	Max.	Unit
Reverse recovery time	$I_F=50A, V_R=200V,$ $di_F/dt=200A/\mu s, T_j=125$	t_{rr}	-	190	-	ns
Reverse recovery current	$I_F=50A, V_R=200V,$ $di_F/dt=200A/\mu s, T_j=25$	I_{RRM}	-	9	-	A
	$I_F=50A, V_R=200V,$ $di_F/dt=200A/\mu s, T_j=125$		-	24	-	
Reverse recovery charge	$I_F=50A, V_R=200V,$ $di_F/dt=200A/\mu s, T_j=25$ $I_F=50A, V_R=200V,$ $di_F/dt=200A/\mu s, T_j$	Q_{rr}	-	400	-	nC

ORDERING INFORMATION



PACKAGE MECHANICAL DATA



Ref.	Dimensions					
	Millimeters			Inches		
	Min.	Typ.	Max.	Min.	Typ.	Max.
A	15.50					
B						
C						
D	1.80	2.00	2.20	0.071	0.079	0.087
E	1.90	2.10	2.30	0.075	0.083	0.091
F	1.00	1.20	1.40	0.039	0.047	0.055
G						
H	4.80	5.00	5.20	0.189	0.197	0.205
J						
K	Ñ		Ñ	Æ		
L						

CHARACTERISTICS CURVE

FIG.1 Typical forward characteristics

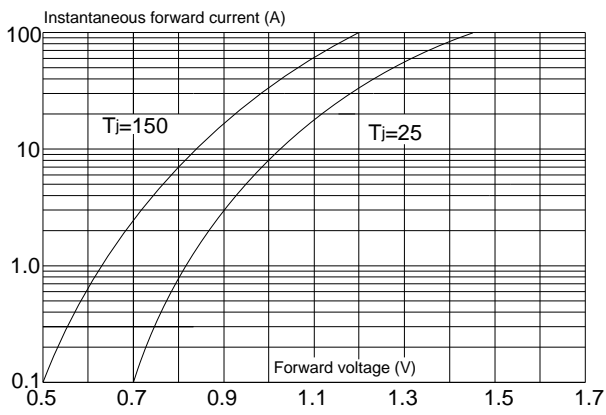
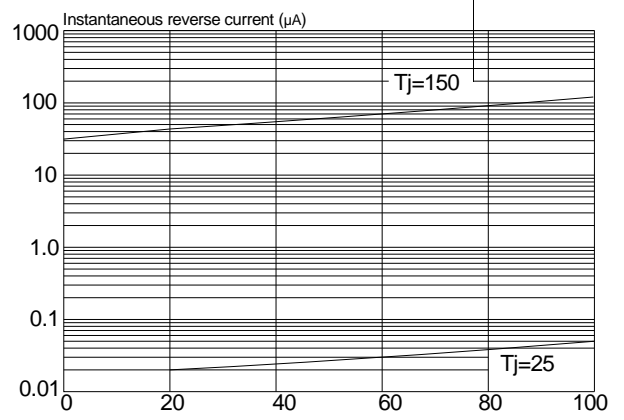


FIG.2 Typical reverse characteristics



JieJie products are not designed for, and shall not be used for, any purpose (including, without limitation, automotive, military, aerospace, medical, life-saving, life-sustaining or nuclear facility applications, devices intended for surgical implant into the body, or any other application in which the failure or lack of desired operation of the product may result in personal injury, death, or property damage) other than those expressly set forth in applicable JieJie product documentation. Warranties granted by JieJie shall be deemed void for products used for any purpose not expressly set forth in applicable JieJi