

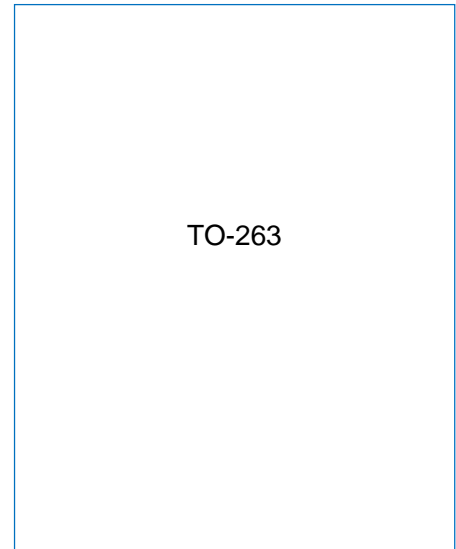


JEUR2006E EPI ULTRAFAST RECOVERY RECTIFIER

Rev.1.8

DESCRIPTION

Plastic package has underwriters laboratory flammability classification 94V-0
 Lead free in comply with EU RoHS 2011/65/EU directives
 Low reverse leakage current
 Ultrafast recovery time and soft recovery characteristics
 Low recovery loss
 Applications for discontinuous current mode (DCM) power factor correction (PFC), Home appliance power supply



MECHANICAL DATA

Case: TO-263, molded plastic over passivated junction
 Terminals: Solder plated, solderable per J-STD-002
 Weight: 1.55 gram

ABSOLUTE MAXIMUM RATING(M RRM

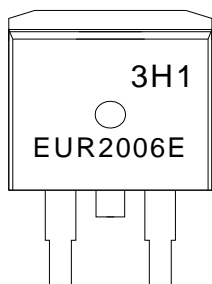
		600	V
Maximum DC blocking voltage	V_{DC}	600	V
Average forward current at $T_C=100$	$I_{F(AV)}$	20	A
Peak forward surge current: 8.3ms single half sine-wave superimposed on rated load	I_{FSM}	200	A
Peak forward surge current: 10ms single half sine-wave superimposed on rated load		180	
Operating junction and storage temperature range	T_J, T_{STG}	-55 to +150	

			A] b	Hmd	A U I	I b] I
Forward voltage	$I_F=20A, T_j=25$	V_F	-	-	1.5	V
Reverse current	$V_R=600V, T_j=25$	I_R	-	-	5	μA
	$V_R=600V, T_j=150$		-	-	300	
Reverse recovery time	$I_F=0.5A, I_R=1A, T_{rr}=0.25A$	t_{rr}	-	-	50	ns

THERMAL RESISTANCES

Symbol	Parameter	Min.	Typ.	Max.	Unit
$R_{th(j-c)}$	Thermal resistance from junction to case	-	2	-	/W

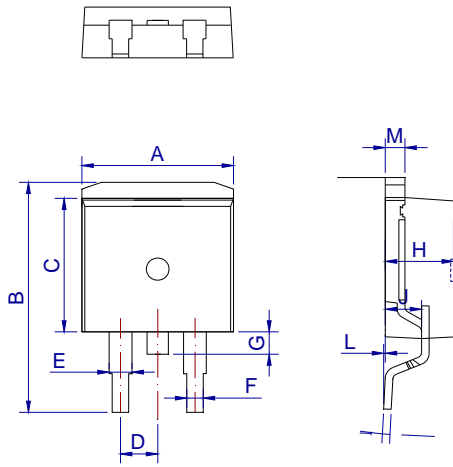
MARKING



ORDERING INFORMATION

J **E** **U** **R** **20** **06** **E** **-R**

PACKAGE MECHANICAL DATA

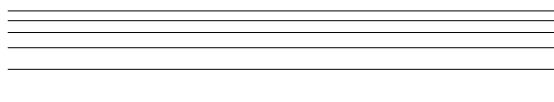


Ref.	Dimensions					
	Millimeters			Inches		
	Min.	Typ.	Max.	Min.	Typ.	Max.
A	9.90		10.20	0.390		0.402
B	14.70		15.80	0.579		0.622
C	8.80		9.60	0.346		0.378
D		2.54			0.100	
E	1.20		1.40	0.047		0.055
F	0.75		0.85	0.030		0.033
G			1.75			0.069
H	4.40		4.70	0.173		0.185
J	2.30		2.70	0.091		0.106
K	0.38		0.55	0.015		0.022
L	0	0.10	0.25	0	0.004	0.010
M	1.17		1.37	0.046		0.054

CHARACTERISTICS CURVE

FIG.1: Typical forward characteristics

FIG.2: Typical reverse characteristics



- (8 5 (

-LH-LH 0LFURHOHFWURC