

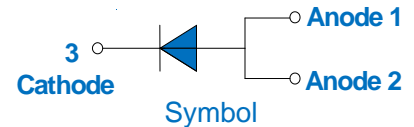


## JEUR0506V EPI SUPERFAST SOFT RECOVERY RECTIFIER

Rev.2.0

### DESCRIPTION

- ± Plastic package has underwriters laboratory flammability classification 94V-0
- μ Lead free in comply with EU RoHS 2011/65/EU directives
- μ Low reverse leakage current
- μ Ultrafast recovery time and soft recovery characteristics
- μ Low recovery loss



### MECHANICAL DATA

- ± Case: TO-277B molded plastic over passivated junction
- μ Terminals: Solder plated, solderable per J-STD-002

### ABSOLUTE MAXIMUM RATING (Rating at 25

$L=90$	$I_{F(AV)}$	5	A
Peak forward surge current:8.3ms single half sine-wave superimposed on rated load	$I_{FSM}$	110	A
Junction temperature and storage temperature range	$T_j, T_{stg}$	-55 to +150	

### ELECTRICAL CHARACTERISTICS(Rating at 25 case temperature unless otherwise specified.)

Parameter		Symbol	Min.	Typ.	Max.	Unit
Forward voltage	$I_F=5A, T_j=25$	$V_F$	-	1.2	1.5	V
	$I_F=5A, T_j=150$		-	-	1.2	
Reverse current	$V_R=600V, T_j=25$	$I_R$	-	-	5	μA
	$V_R=600V, T_j=150$		-	-	200	
Reverse recovery time	$I_F=0.5A, I_R=1A,$ $I_{rr}=0.25A$	$t_{rr}$	-	-	50	ns

7

-

M

-085 9

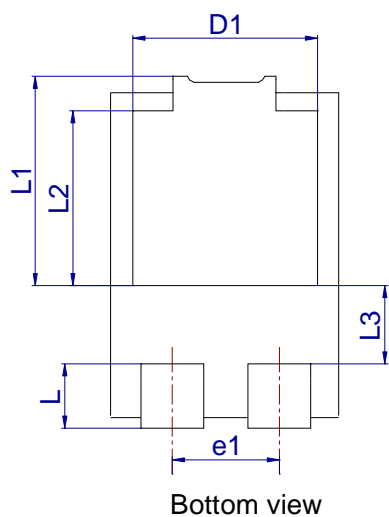
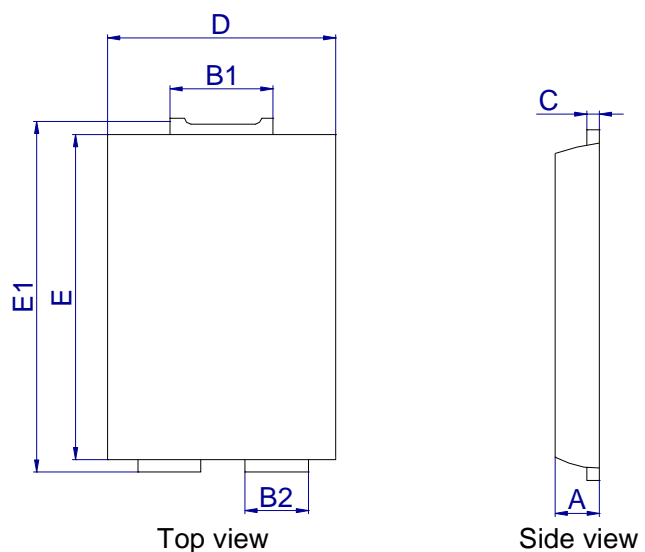
-LH-LH 0LFURHOHFWURQL

7-(50\$/ 5(6,67\$1&(6

6\PER		3DUDPHWHU			0LQ	7\S	0D[	8QL
WK M	7KHUPDO	UHVLY	WQ	WERQURR	MP	ELH	QW	:



PACKAGE MECHANICAL DATA



PACKAGE INFORMATION-TO-277B

PART No. -



CHARACTERISTICS CURVE

FIG.1: Typical forward characteristics

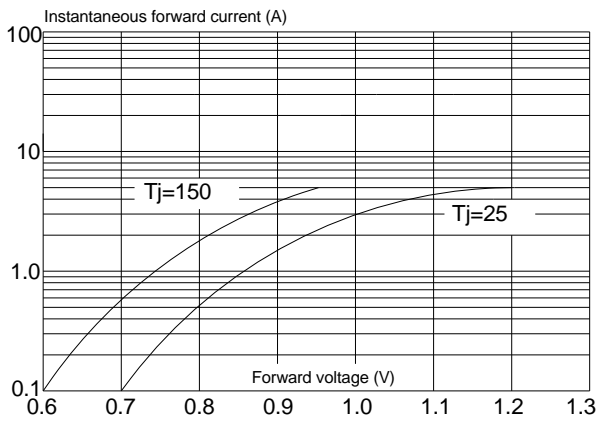


FIG.2: Typical reverse characteristics

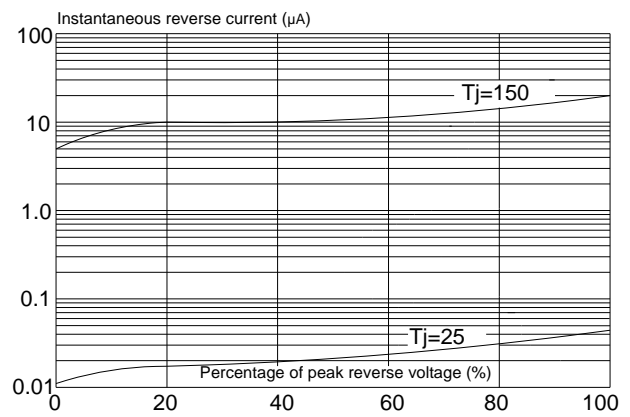


FIG.3: Maximum non-repetitive peak forward surge current

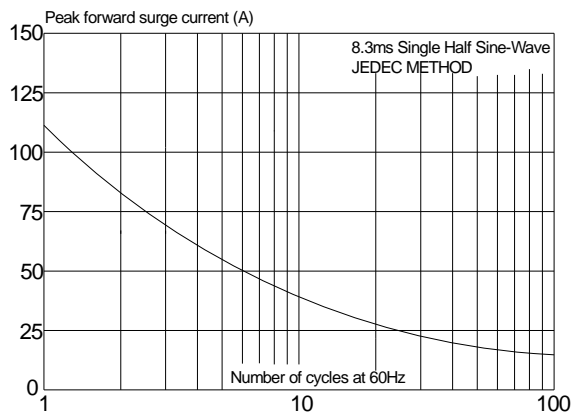
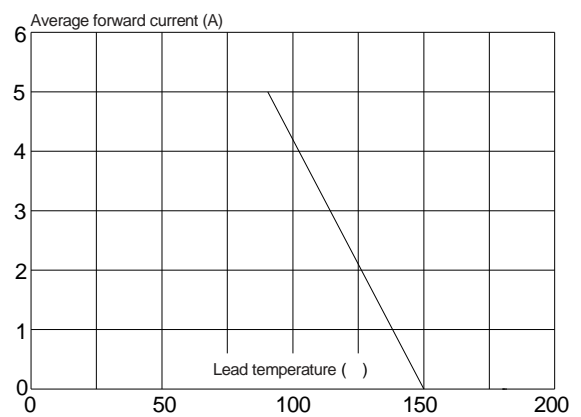


FIG.4: Forward current derating curve





JieJie products are not designed for, and shall not be used for, any purpose (including, without limitation, automotive, military, aerospace, medical, life-saving, life-sustaining or nuclear facility applications, devices intended for surgical implant into the body, or any other application in which the failure or lack of desired operation of the product may result in personal injury, death, or property damage) other than those expressly set forth in applicable JieJie product documentation. Warranties granted by JieJie shall be deemed void for products used for any purpose not expressly set forth in applicable JieJie documentation. JieJie shall not be liable for any claims or damages arising out of products used in applications not expressly intended by JieJie as set forth in applicable JieJie documentation. The sale and use of JieJie products is subject to JieJie terms and conditions of sale, unless otherwise agreed by JieJie.

Information furnished in this document is believed to be accurate and reliable. However, Jiangsu JieJie Microelectronics Co., Ltd. assumes no responsibility for the consequences of use without consideration for such information nor use beyond it.

Information mentioned in this document is subject to change without notice, apart from that when an agreement is signed, Jiangsu JieJie complies with the agreement.

Products e do M do t s