



JECR3006AL EPI HYPERFAST SOFT RECOVERY RECTIFIER

Rev.1.4

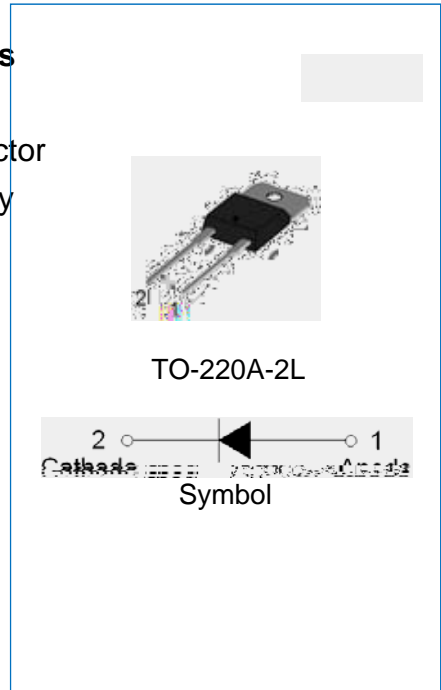
so Z t recovery c \ aracteristics

Low recovery loss

Applications for discontinuous current mode (DCM) power factor correction (PFC), active PFC in air conditioner, high frequency switched-mode power supplies

Insulation (2500V

RMS) allows placement on same heatsink as mosfet and flexible heatsinking on common or separate heatsink



MECHANICAL DATA

Case: TO-220A-2L molded plastic over passivated junction

Terminals: Solder plated, solderable per J-STD-002

Internally constructed isolated package is offered for ease of heat sinking with highest isolation voltage

Weight:2.1 gram

ABSOLUTE MAXIMUM RATING (Rating at 25 ambient temperature unless otherwise specified.)

Parameter	Symbol	JECR3006AL	Unit
Maximum repetitive peak reverse voltage	V_{RRM}	600	V
Maximum DC blocking voltage	V_{DC}	600	V
Average forward current at $T_{mb}=90$	$I_{F(AV)}$	30	A
Peak forward surge current: 8.3ms single half sine-wave superimposed on rated load	I_{FSM}	220	A
Peak forward surge current: 10ms single half sine-wave superimposed on rated load		200	
Operating junction and storage temperature range	T_J, T_{STG}	-55 to +150	



ISOLATION CHARACTERISTICS

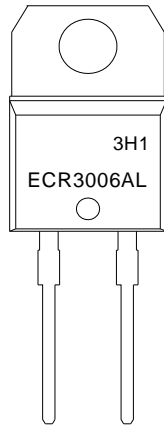
Symbol	Parameter	Conditions	Min.	Typ.	Max.	Unit
$V_{isol(RMS)}$	RMS isolation voltage	50Hz f 60Hz,RH 65%,from all pins to external heatsink, sinusoidal waveform, clean and dust free	-	-	2500	V
C_{isol}	Isolation capacitance	from cathode to external heatsink	-	10	-	pF

ELECTRICAL CHARACTERISTICS(Rating at 25 ambient temperature unless otherwise specified.)

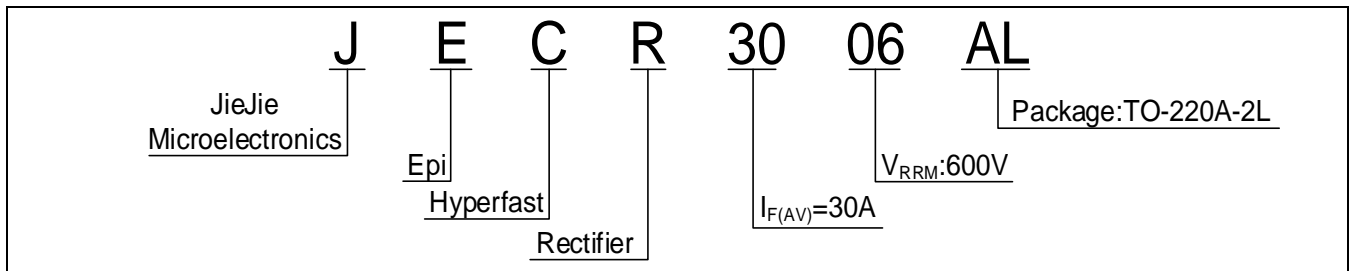
Forward voltage	$I = 30A, T = 25$	$V_{E 2}$	-	2	2.75	V
	$I = 30A, T = 150$		-	1.38	1.8	

Reverse current j

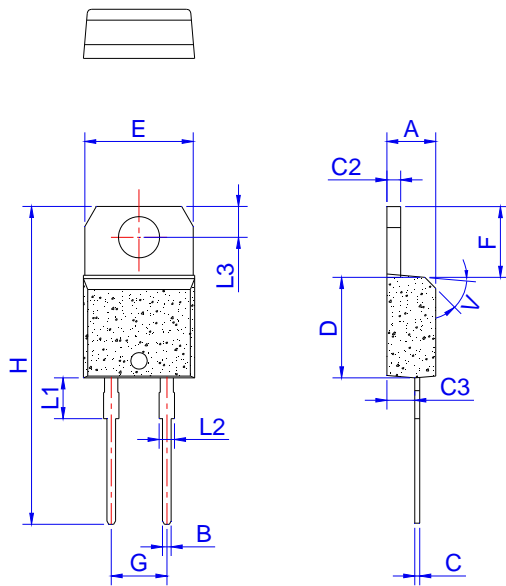
MARKING



ORDERING INFORMATION

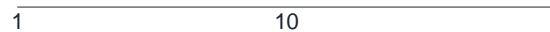
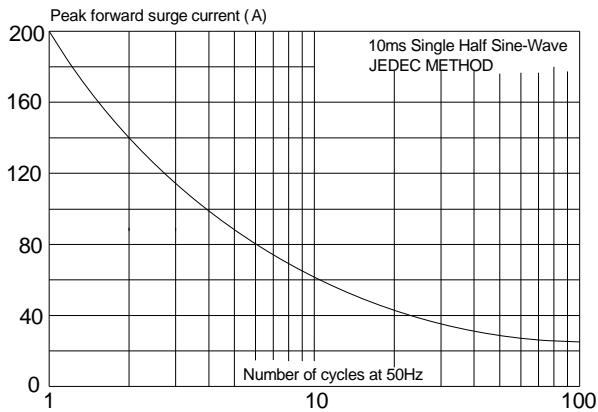
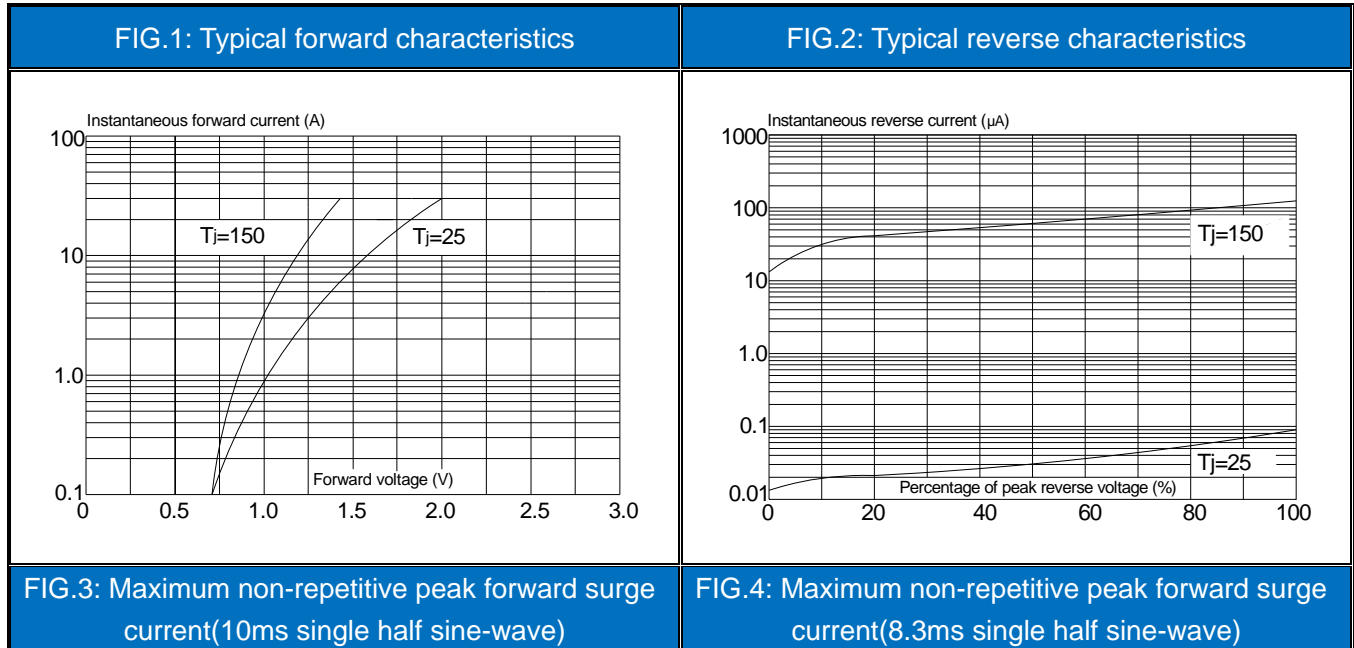


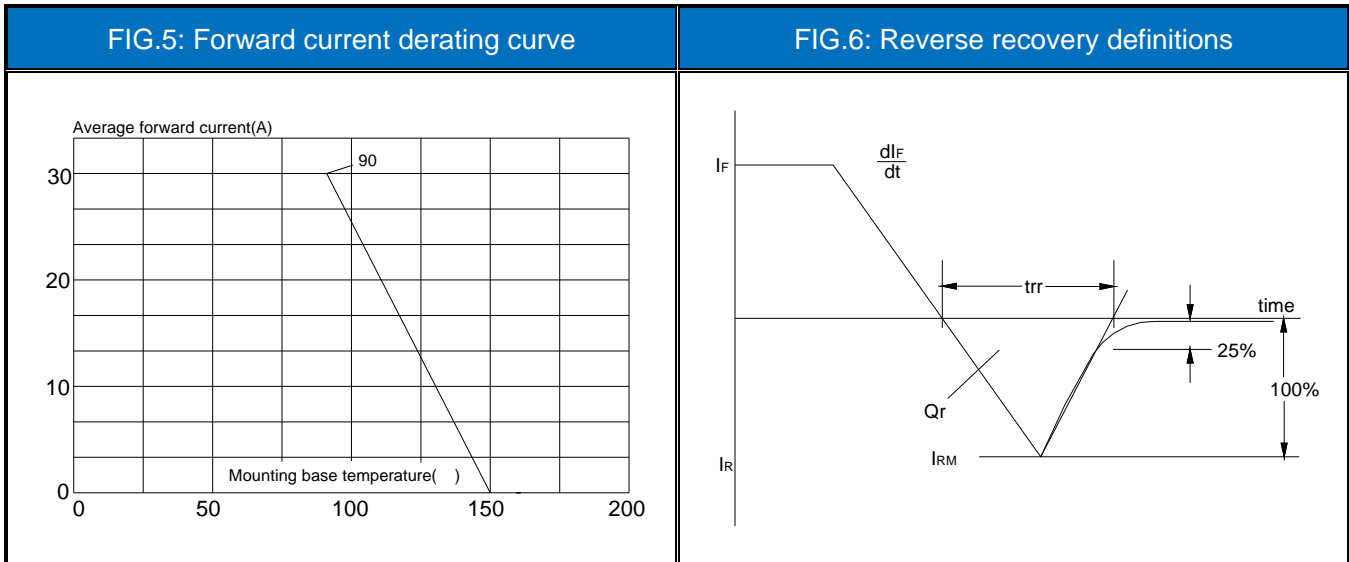
PACKAGE MECHANICAL DATA





CHARACTERISTICS CURVE





JieJie products are not designed for, and shall not be used for, any purpose (including, without limitation, automotive, military, aerospace, medical, life-saving, life-sustaining or nuclear facility applications, devices intended for surgical implant into the body, or any other application in which the failure or lack of desired operation of the product may result in personal injury, death, or property damage) other than those expressly set forth in applicable JieJie product documentation. Warranties granted by JieJie shall be deemed void for products used for any purpose not expressly set forth in applicable JieJie documentation. JieJie shall not be liable for any claims or damages arising out of products used in applications not expressly intended by JieJie as set forth in applicable JieJie documentation. The sale and use of JieJie products is subject to JieJie terms and conditions of sale, unless otherwise agreed by JieJie.

Information furnished in this document is believed to be accurate and reliable. However, Jiangsu JieJie Microelectronics Co., Ltd. assumes no responsibility for the consequences of use without consideration for such information nor use beyond it.

Information mentioned in this document is subject to change without notice, apart from that when an agreement is signed, Jiangsu JieJie complies with the agreement.

Products and information provided in this document have no infringement of patents. Jiangsu JieJie assumes no responsibility for any infringement of other rights of third parties which may result from the use of such products and information.

This document is the 1.4th version which is made in 10-July-2025. This document supersedes and replaces all information previously supplied.

 is a registered trademark of Jiangsu JieJie Microelectronics Co., Ltd.

Copyright ©2025 Jiangsu JieJie Microelectronics Co., Ltd. Printed All rights reserved.