

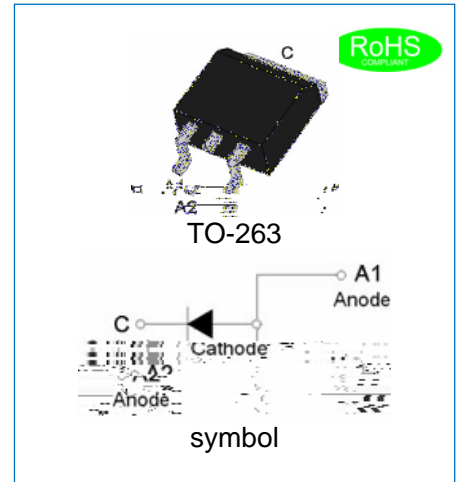


**GP2506E~GP2520E**  
**GENERAL PURPOSE RECTIFIER**

Rev.3.7

**DESCRIPTION**

Plastic package has underwriters laboratories flammability classification 94V-0  
 Glass passivated chip junction  
 Lead free in compliance with EU RoHS 2011/65/EU directive



**MECHANICAL DATA**

Case: TO-263, molded plastic over passivated junction  
 Terminals: Solder plated, solderable per J-STD-002  
 Weight: 1.514 gram

**ABSOLUTE MAXIMUM RATING AND ELECTRICAL CHARACTERISTICS**

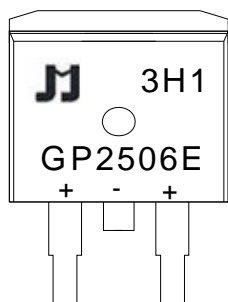
(Rating at 25 ambient temperature unless otherwise specified.)

	RRM	600	800	1000	1200	1600	2000	V
Maximum RMS voltage [ e	RMS	( 20	560	700	8 ( 0	1120	1 ( 00	V
Maximum DC blocking voltage [ e	DC V	600	800	1000	1200	1600	2000	V
Average forward current @100	IF(AV)	25						A
Peak forward surge current: 8.3ms single half sine-wave superimposed on rated load (JEDEC method)	IFSM	350			300			A
Maximum forward voltage @IF=25A	VF	1.2						V
Maximum DC reverse current at rated DC blocking voltage	Tj=25	5						µA
	Tj=150	1						mA
Typical junction capacitance VR=4.0V, f=1MHz	CJ	150			130			pF
Operating junction and storage temperature range	TJ,TSTG	-55 to +150						

**THERMAL RESISTANCES**

Symbol	Parameter	GP2506E	GP2508E	GP2510E	GP2512E	GP2516E	GP2520E	Unit
Rth(j-c)	Junction to case	4						/W

MARKING



G	General Purpose Rectifier
P	Pin
25	$I_{F(AV)}=25A$
06	$V_{RRM}:600V$
E	Package: TO-263

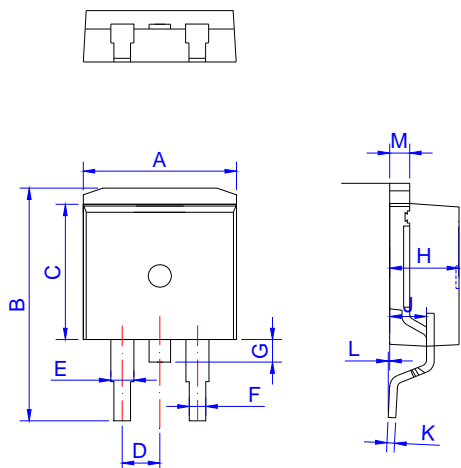
xH1: Month, 1/2/3~9/A/B/C

3x1:

2018	2019	2020	2021	2022	2023	2024
H	I	J	K	L	M	N
2025	2026	2027	2028	2029	2030	...
O	P	Q	R	S	T	...

3Hx: Batch number

PACKAGE MECHANICAL DATA



TO-263

Ref.	Dimensions					
	Millimeters			Inches		
	Min.	Typ.	Max.	Min.	Typ.	Max.
A	9.90		10.20	0.390		0.402
B	14.70		15.80	0.579		0.622
C	8.80		9.60	0.346		0.378
D		2.54			0.100	
E	1.20		1.40	0.047		0.055
F	0.75		0.85	0.030		0.033
G			1.75			0.069
H	4.40		4.70	0.173		0.185
J	2.30		2.70	0.091		0.106
K	0.38		0.55	0.015		0.022
L	0	0.10	0.25	0	0.004	0.010
M	1.17		1.37	0.046		0.054

**GP2506E~GP2520E**

**JieJie Microelectronics Co., Ltd.**

