



T0650H-8E 6A TRIAC

Rev.A.1.0

DESCRIPTION:

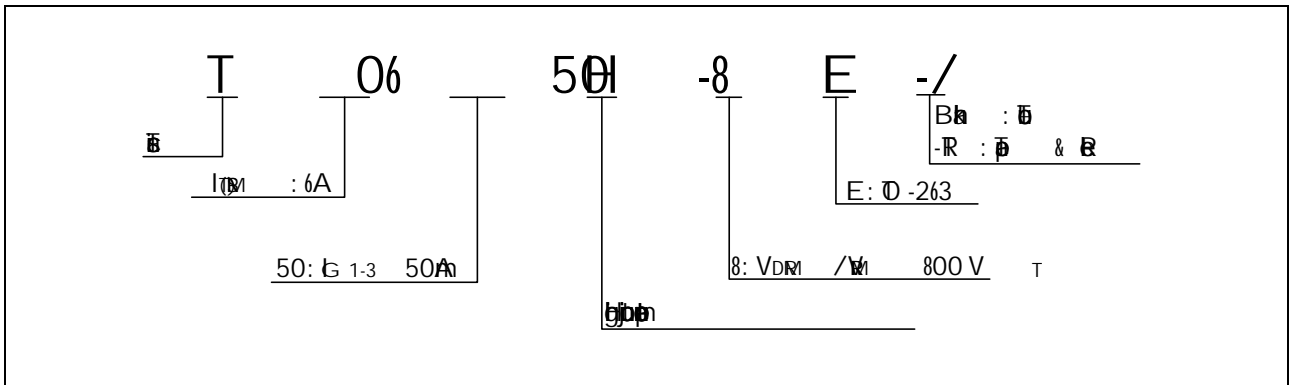
650H-8E 6A TRIAC  
by tabdaa00 F 0h

$I_{G1}$ ( $T_j=25^\circ\text{C}$ ; $V_D=12\text{V}$ ; $R_L=33\Omega$ )	$V_p$	4	V
--	-------	---	---

ELECTRICAL CHARACTERISTICS

Symbol	Test Condition	Quadrant	Value	Unit
$I_G$	$V_D = 12\text{V}$ $R_L = 33\Omega$	- -	50	A
$V_G$		- -	1	V
$V_G$	$V_D = V_{DM}$ $T_j = 150^\circ\text{C}$ $R_L = 3.3\text{K}$	- -	0.2	V
$I_L$	$I_G = 1.2\text{A}$	-	70	A
			100	A
$I_H$	$I_T = 100\text{A}$		50	A

ORDERING INFORMATION



MARKING

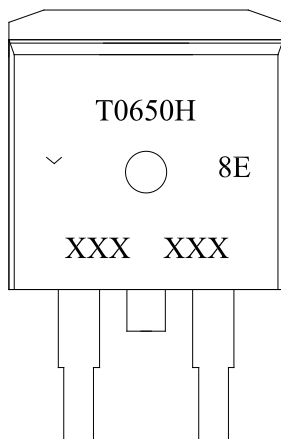


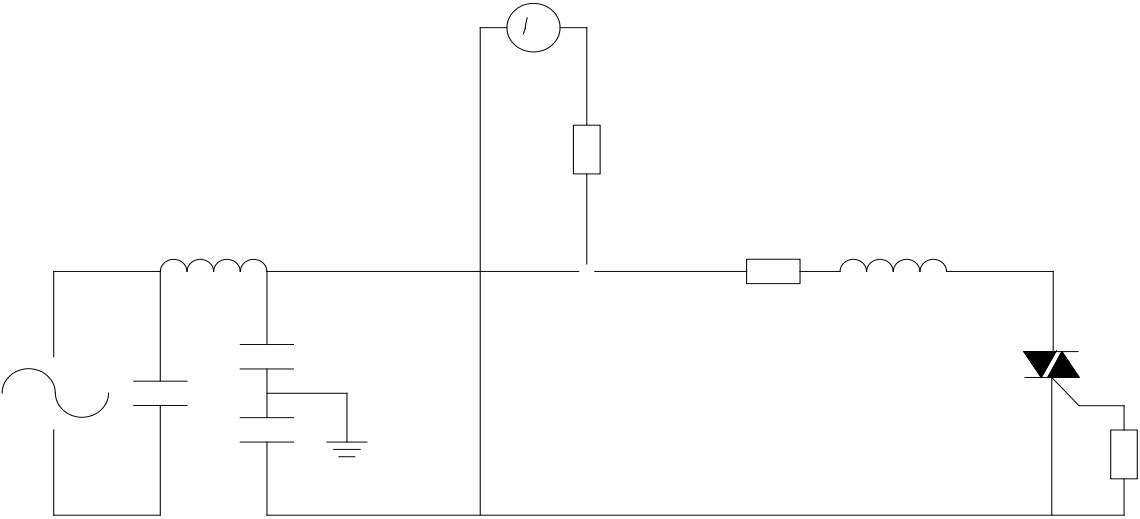


FIG.7: Pin 1

1

(

g







DELIVERY MODE



