



JST26UF-800BW 25A TRIAC

Rev.A.1.0

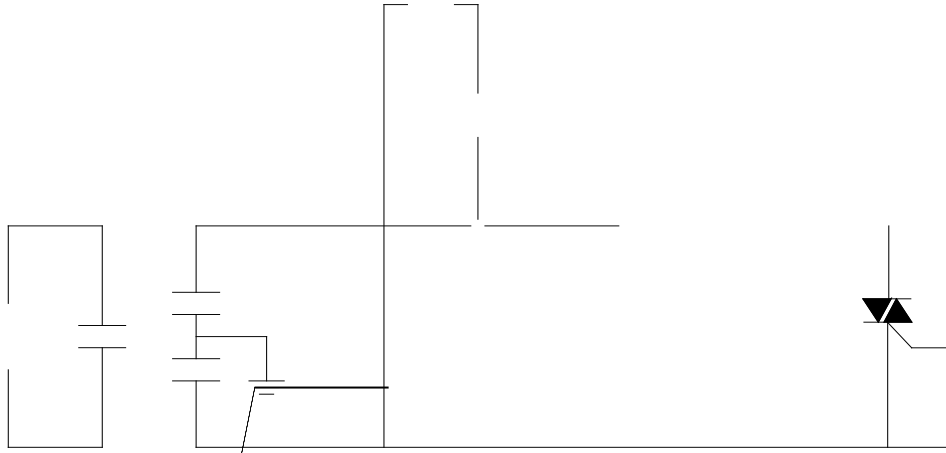
DESCRIPTION:

⊠ 36 ⊞ -800BW ~~http~~

$P_{G(AV)}$	$f_j=125$)	$P_{G(AV)}$	0.5	W
P_{GM}		P_{GM}	10	W
V_p	($T_j=25$; ρ - ρ - FIG.7)	V_p	5	V

ELECTRICAL CHARACTERISTICS($T_j=25$)

Symbol	Test Condition	Quadrant	Value	Unit
I_{GT}	$V_D=12V$ $L=33$	- -	MAX .	50
V_{GT}		- -	MAX .	1
V_{GD}	V			



PACKAGE MECHANICAL DATA



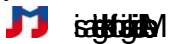
© 2023 JieJie Microelectronics Co., Ltd.
All rights reserved.
This document is the property of JieJie Microelectronics Co., Ltd.
No part of this document may be reproduced, stored in a retrieval system, or transmitted in any form or by any means, electronic, mechanical, photocopying, recording, or otherwise, without the prior written permission of JieJie Microelectronics Co., Ltd.

© 2023 JieJie Microelectronics Co., Ltd.

© 2023 JieJie Microelectronics Co., Ltd.

© 2023 JieJie Microelectronics Co., Ltd.

© 2023 JieJie Microelectronics Co., Ltd.



© 2023 JieJie Microelectronics Co., Ltd.

© 2023 JieJie Microelectronics Co., Ltd.