



JST24A-1200CW 25A TRIAC

Rev.A.1.1

DESCRIPTION:

The JST24A-1200CW triac is suitable for general purpose AC switching. It can be used as an ON/OFF function in applications such as heating regulation, induction motor starting circuits, for phase control operation in light dimmers, motor speed controllers. JST24A-1200CW snubberless triac is especially recommended for use on inductive loads. By using an internal ceramic pad, JST24A-1200CW provides a rated insulation voltage of 2500 VRMS, complying with UL standards (File ref: E252906). Package TO-220A is RoHS compliant.

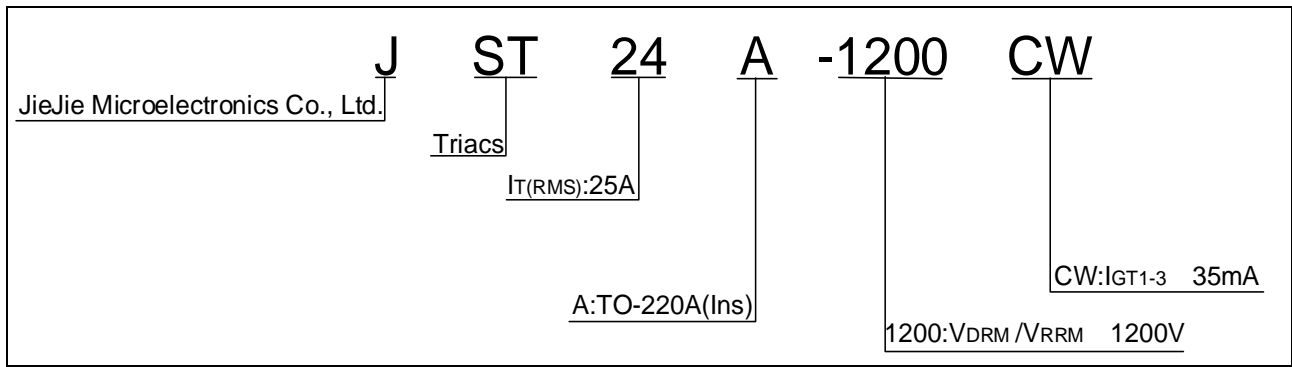
MAIN FEATURES

0 ABSOLUTE MAXIMUM(RATING2 6 - ) G (

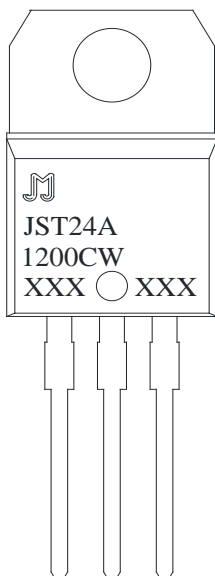
# JST24A-1200CW

Average gate power dissipation ( $T_j=125$ )	$P_{G(AV)}$	0.5	W
Peak gate power	$P_{GM}$	10	W
Peak pulse voltage ( $T_j=25$ ; non-repetitive,off-state;FIG.7)	$V_{pp}$	2.5	kV

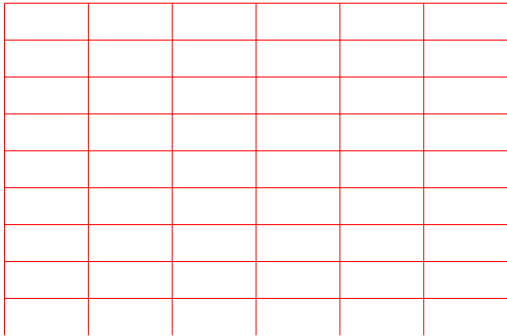
## ORDERING INFORMATION



## MARKING

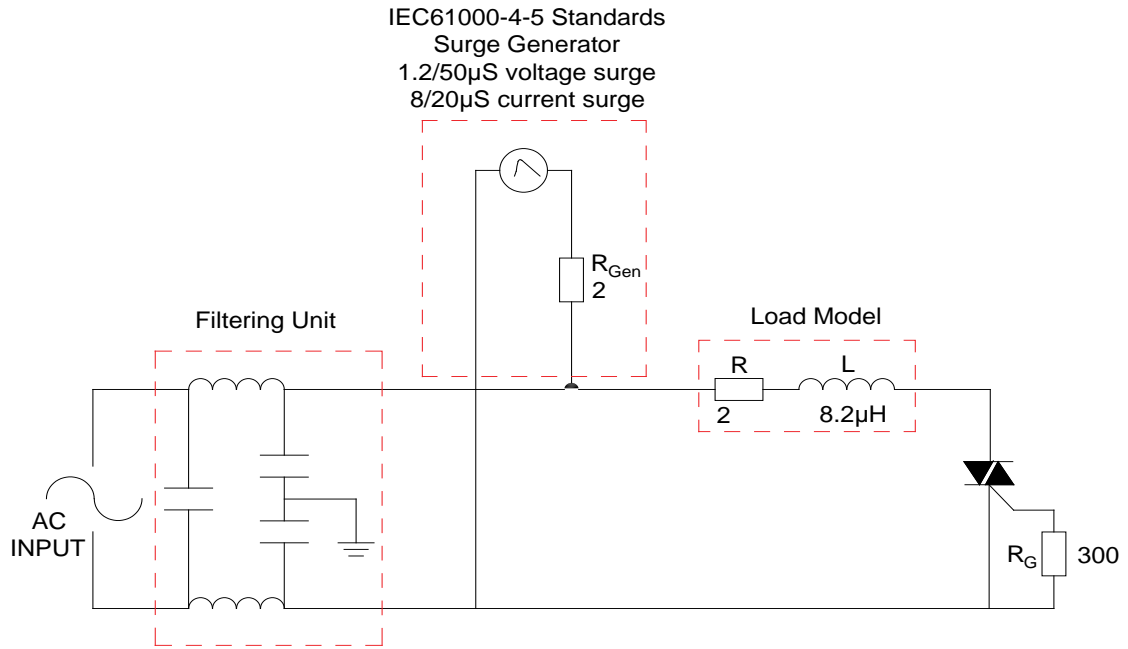


**FIG.1:** Maximum power dissipation versus RMS on-state current



**FIG.2:** RMS on-state current versus case temperature 051015202530354045051035

FIG.7 Test circuit for inductive and resistive loads to IEC-61000-4-5 standards



**ORDERING INFORMATION**

<b>Order code</b>	<b>Voltage <math>V_{DRM}/V_{RRM}(V)</math></b>	<b>IGT(mA)</b>	<b>Package</b>	<b>Base qty. (pcs)</b>	<b>Delivery mode</b>
-------------------	--	----------------	----------------	----------------------------	--------------------------



