



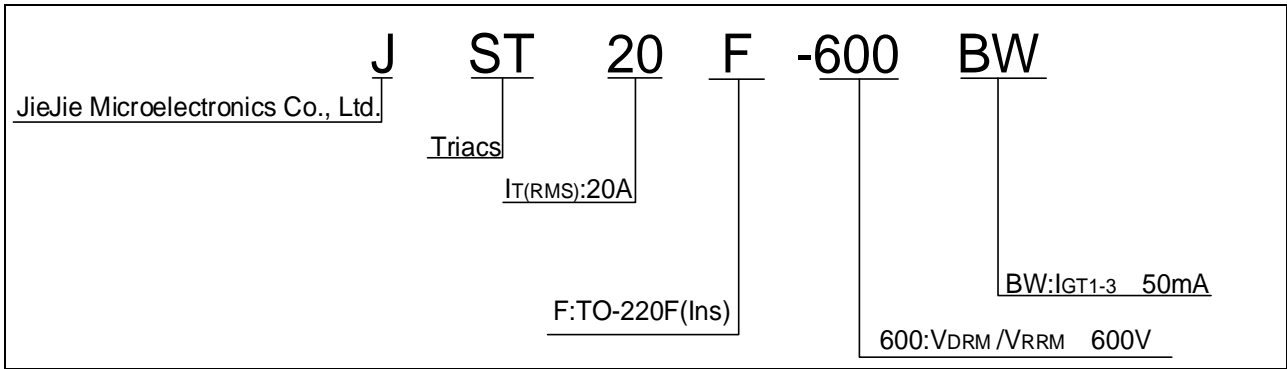
DE



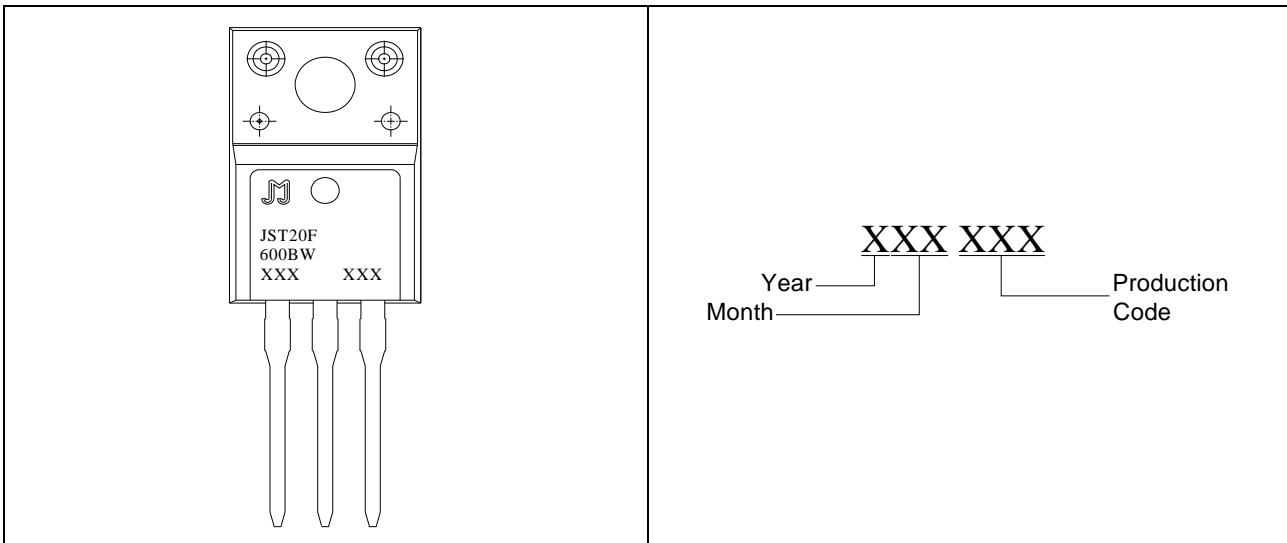
Peak gate power	P_{GM}	10	W
Peak pulse voltage ($T_j=25-W$.)			



ORDERING INFORMATION

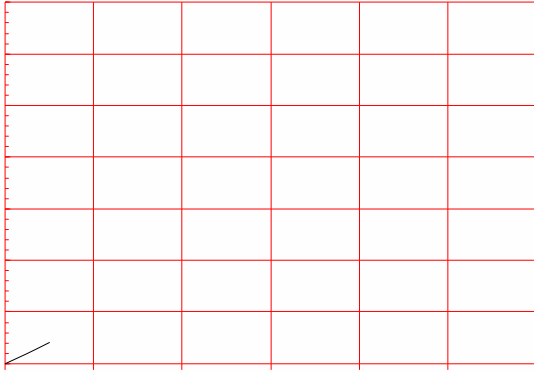


MARKING





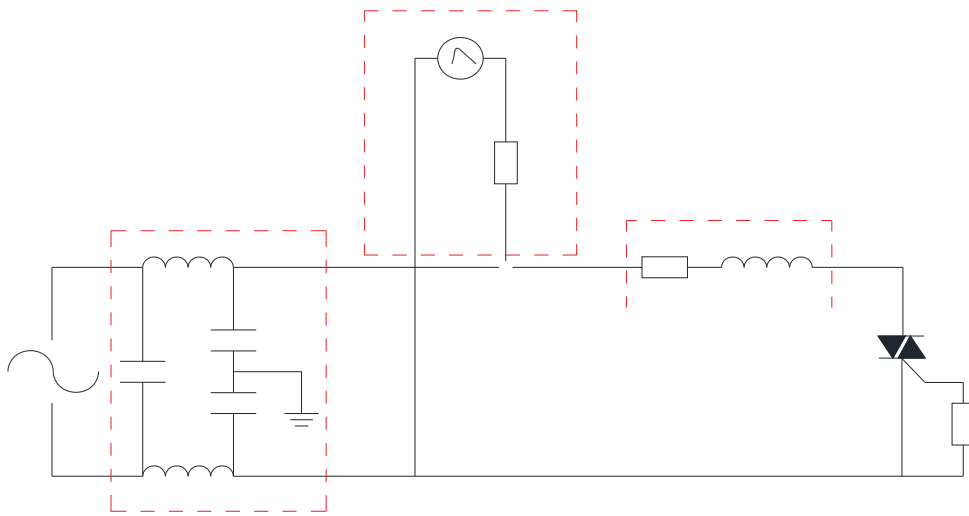
Maximum power dissipation versus RMS
on-state current



RMS on-state current versus case
temperature



FIG.7 Test circuit for inductive and resistive loads to IEC-61000-4-5 standards





ORDERING INFORMATION

Date	Revision	Changes
Apr.12, 2023	A.1.0	Last updated
Oct.13, 2025	A.1.1	Revise PACKAGE MECHANICAL DATA

