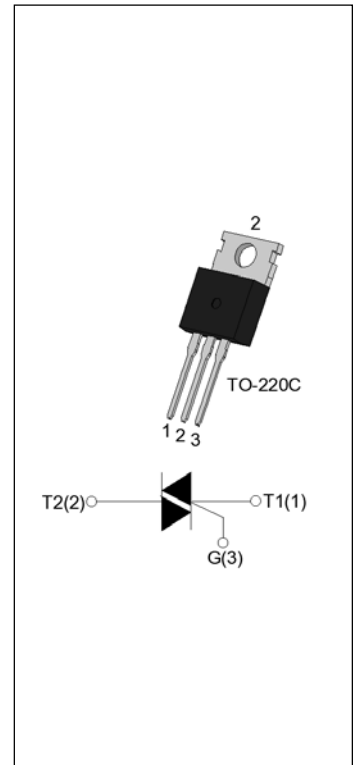


DESCRIPTION:

6C-1200TW JST1,A TRIAC






MAIN FEATURES

Symbol	Parameter	Unit
I_M	Max. Current	A
V_{DM} / V_{RM}	Max. Voltage	V
I_G	Gate Current	A

ABSOLUTE MAXIMUM RATINGS

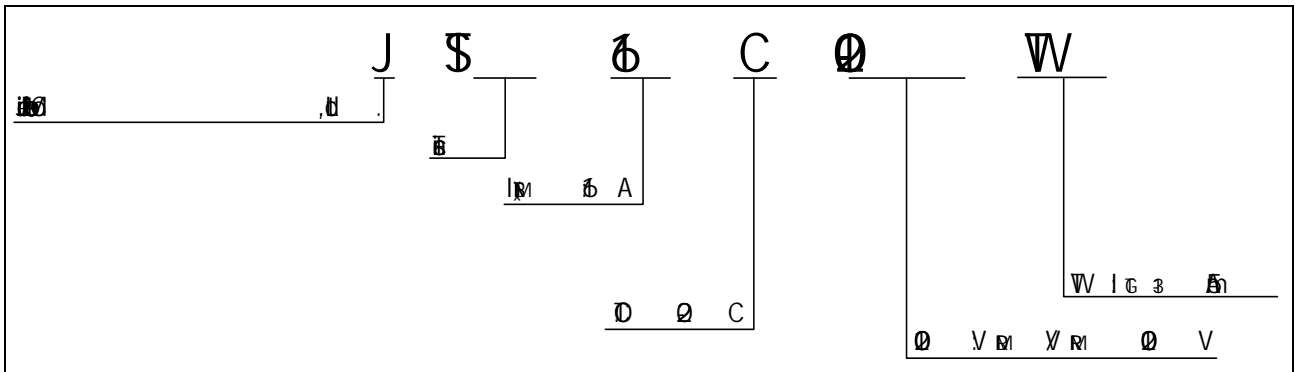
Parameter	Symbol	Value	Unit
Storage Temperature	T_{STG}	-55 to 125	°C
Operating Temperature	T_{OP}	-40 to 85	°C
Max. Forward Voltage	V_{DM}	0	V
Max. Reverse Voltage	V_{RM}	0	V
Max. Forward Current	I_M	6	A
Max. Forward Current (pulsed)	$I_{M(p)}$	6	A
Max. Forward Current (pulsed)	$I_{M(p)}$	8	A
Max. Forward Current Squared Time	I^2t	8	A ² s
Max. Gate Current (at $I_G \geq I_G$)	I_G	6	A/ μ s
Max. Gate Current (pulsed)	$I_{G(p)}$	4	A
Max. Power Dissipation	$P_{D(p)}$	6	W
Max. Power	P_M	0	W

 V _p	 3	 K
---	--	--

ELECTRICAL CHARACTERISTICS

Symbol

ORDERING INFORMATION



MARKING

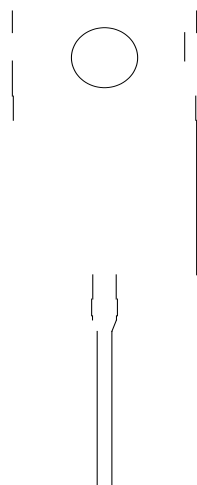


FIG.1: ~~Pin~~

0 ~~Pin~~

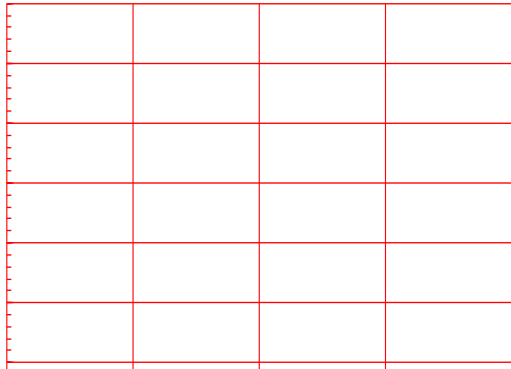
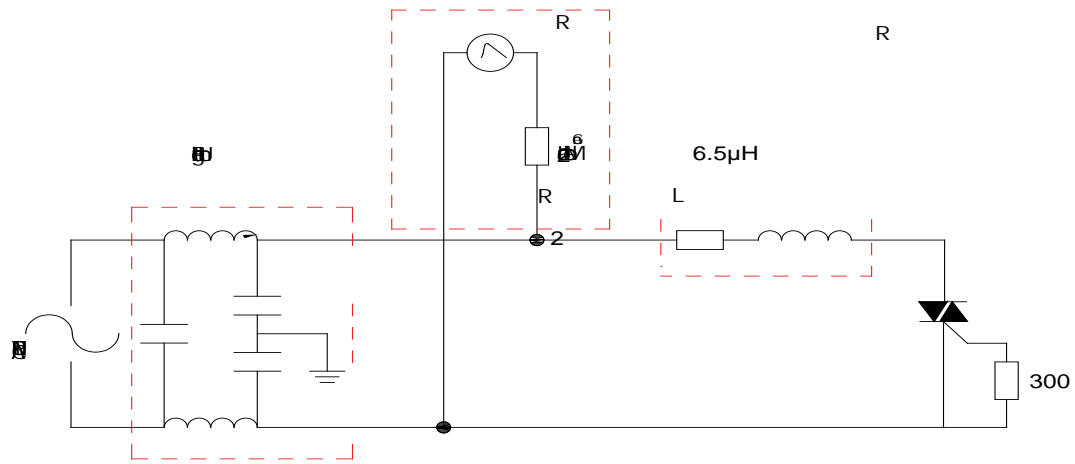


FIG.2: ~~Pin~~ 0 ~~Pin~~

0510152025

8.206 Surge surge



ORDERING INFORMATION

Order code	Voltage V_{DRM}/V_{RRM} (V)	IGT(mA)	Package	Base qty. (pcs)	Delivery mode
		- -			
JST16C-1200TW	1200	5	TO-220C	50	Tube

Document Revision History

①	②	③
---	---	---

