



JST16A-1200SW 16A TRIAC

Rev.A.1.1

DESCRIPTION:

W -345A)The JST16A-1200SW is a 16A, 1200V, 0.65mm pitch, 5-pin, 0.6d [(-)326(0)]8.4.52 Tm8.4.5333. 5248.4

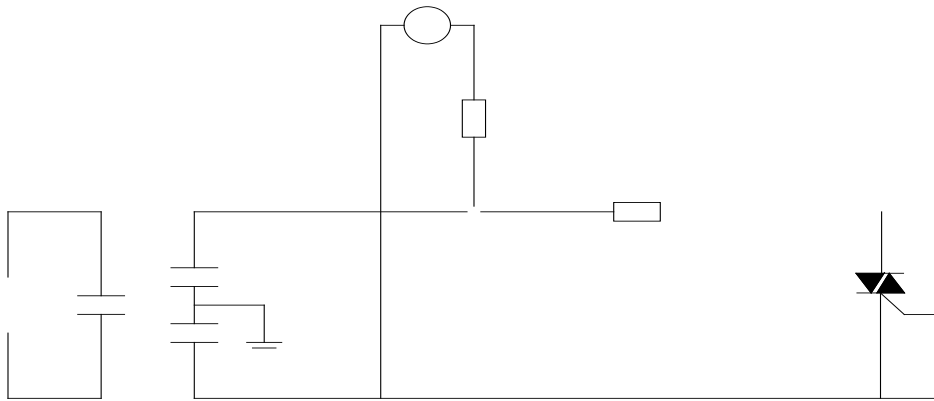
JST16A-1200SW

 **JieJie Microelectronics Co., Ltd.**

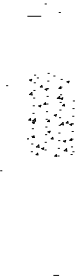
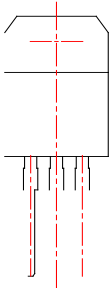
ORDERING INFORMATION

Q ~~BERQ~~ J r209 53TJ 89 (a3 26 (r)-8.20.00

FIG.7 Test circuit for inductive and resistive loads to IEC-61000-4-5 standards



PACKAGE MECHANICAL DATA



Information furnished in this document is believed to be accurate and reliable. However,
Jiangsu