



JIEJIE MICROELECTRONICS CO., LTD.

JST06C-8 6 Tm.7 (622)3.2 (0)3.60 08 y06 1122-(8.)-Tw 1104 1167ox 0 Tc 0 Tw 108 0.7

| | | | |
|--|----------|---|----|
| Peak pulse voltage ($T_j=25$; non-repetitive, off-state; FIG.7) | V_{pp} | 3 | kV |
|--|----------|---|----|

($T_j=25$ unless otherwise specified)

| Symbol | Test Condition | Quadrant | Value | | Unit |
|----------------------|---|----------|-------|------|------|
| I_{GT} | $V_D=12V R_L=33$ | - - | MAX. | 35 | mA |
| V_{GT} | | - - | MAX. | 1 | V |
| V_{GD} | $V_D=V_{DRM} T_j=125$ $R_L=3.3k$ | - - | MIN. | 0.2 | V |
| I_L | $I_G=1.2I_{GT}$ | - | MAX. | 50 | mA |
| | | | | 60 | |
| I_H | $I_T=100mA$ | | MAX. | 35 | mA |
| dV/dt | $V_D=540V$ Gate Open $T_j=125$ | | MIN. | 1200 | V s |
| (dI/dt) _c | $T_j=125$ | | MIN. | 4 | A/ms |
| t_{on} | $I_G=40mA I_A=200mA I_R=20mA$ $T_j=25$ | | TYP. | 3 | s |
| t_{off} | | | | 30 | |

| Symbol | Parameter | | Value(MAX.) | Unit |
|-----------|-----------------------------|-----------|-------------|------|
| V_{TM} | $I_{TM}=8.5A t_p=380 \mu s$ | $T_j=25$ | 1.5 | V |
| V_{TO} | Threshold voltage | $T_j=125$ | 0.82 | V |
| R_D | Dynamic resistance | $T_j=125$ | 57 | m |
| I_{DRM} | $V_D=V_{DRM} V_R=V_{RRM}$ | $T_j=25$ | 5 | A |
| I_{RRM} | | $T_j=125$ | 0.3 | mA |

| Symbol | Parameter | Value | Unit |
|---------------|--------------------------|-------|---------|
| $R_{th(j-c)}$ | junction to case (AC) | 1.7 | μW |
| $R_{th(j-a)}$ | junction to ambient (AC) | 60 | μW |

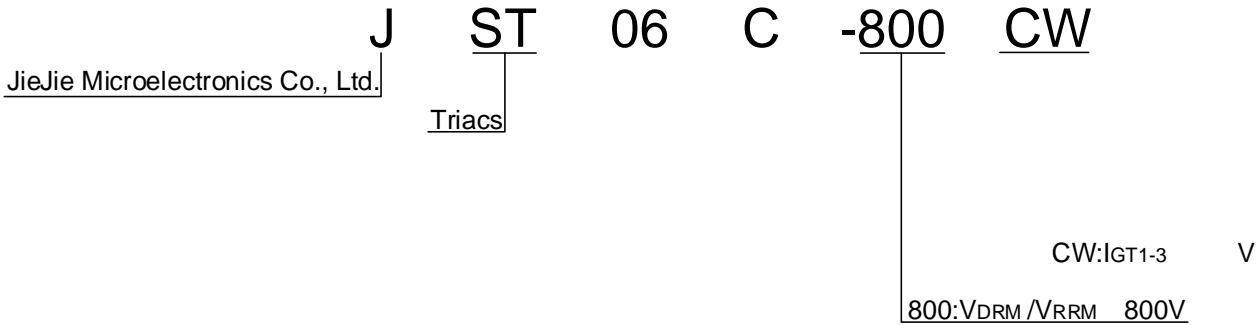
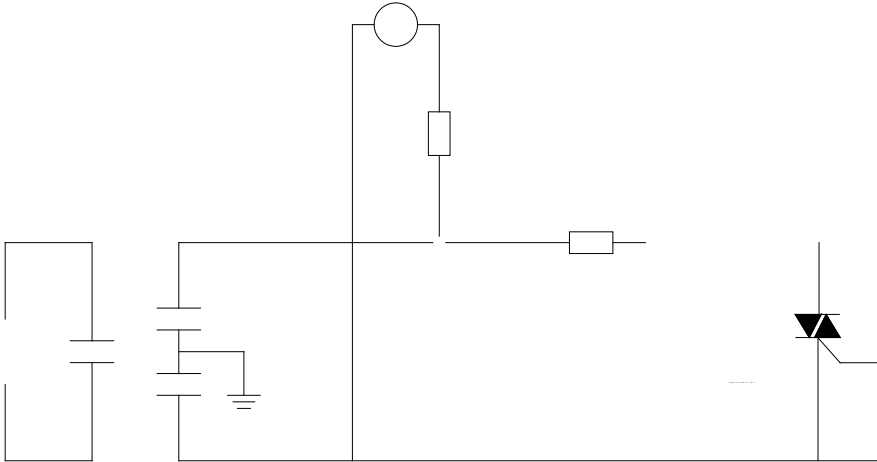


FIG.1:

FIG.7 Test circuit for inductive and resistive loads to IEC-61000-4-5 standards



| Order code | Voltage V _{DRM} /V _{RRM} (V) | IGT(mA) | Package | Base qty. (pcs) | Delivery mode |
|--------------|---|---------|---------|--------------------|------------------|
| | | - - | | | |
| JST06C-800CW | 800 | 35 | TO-220C | 50 | Tube |

Document Revision History

| Date | Revision | Changes |
|--------------|----------|--------------------------------|
| Apr.11, 2023 | A.1.0 | Last updated |
| Oct.15, 2025 | A.1.1 | Revise PACKAGE MECHANICAL DATA |

Information furnished in this document is believed to be accurate and reliable. However, Jiangsu JieJie Microelectronics Co., Ltd. assumes no responsibility for the consequences of use without consideration for such information nor use beyond it. Information mentioned in this document is subject to change without notice, apart from that when an agreement is signed, Jiangsu JieJie complies with the agreement.

Products and information provided in this document have no infringement of patents. Jiangsu JieJie assumes no responsibility for any infringement of other rights of third parties which may result from the use of such products and information. This document supersedes and replaces all information previously supplied.



is a registered trademark of Jiangsu JieJie Microelectronics Co., Ltd.

Copyright © 2025 Jiangsu JieJie Microelectronics Co., Ltd. All rights reserved.