



JST06A-800SW 6A TRIAC

Rev.A.1.1

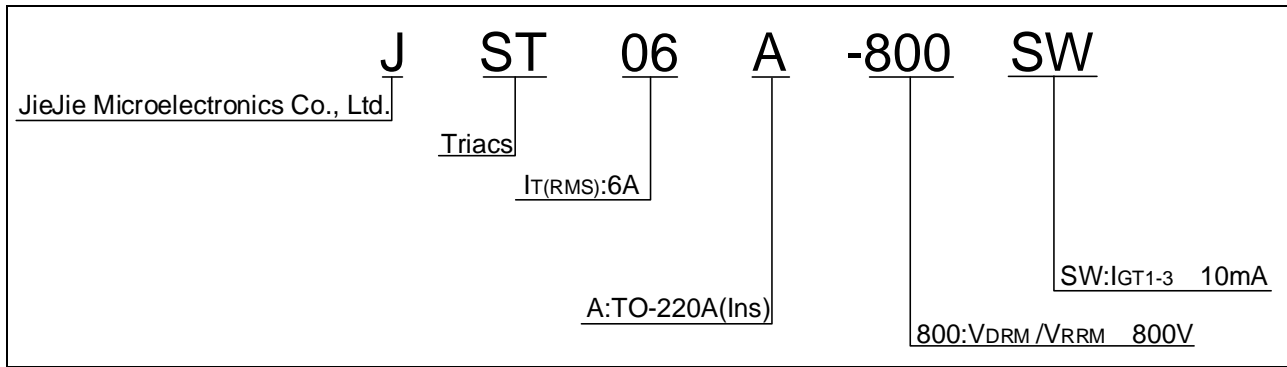
DESCRIPTION:

The JST06A-800SW triac is suitable for general purpose AC switching. It can be used as an ON/OFF function in applications such as heating be 0 0 104eEMC 23.07 a.2 (/uu(o)10)4 (uc)14 (h (F)5 ,3.9 (07 0 Td2

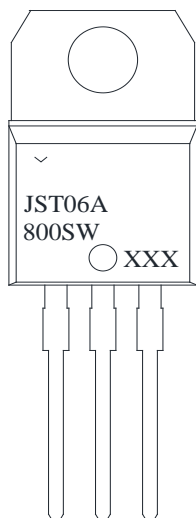
JST06A-800SW

| | | | |
|---|-------------|-----|---|
| Peak gate current ($t_p=20\mu s$, $T_j=125$) | I_{GM} | 4 | A |
| Average gate power dissipation ($T_j=125$) | $P_{G(AV)}$ | 0.5 | W |
| Peak gate power Peak pulse voltage ($T=25$; non-repetitive,off-state;FIG.7) | P_{GM} | 10 | W |

ORDERING INFORMATION



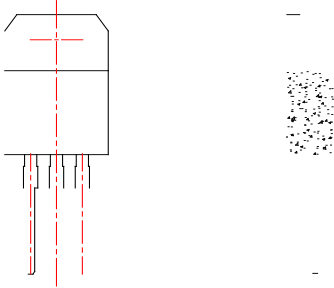
MARKING



JST06A-800SW

JieJie MicroelectronroM

PACKAGE MECHANICAL DATA



Information furnished in this document is believed to be accurate and reliable. However, Jiangsu JieJie Microelectronics Co., Ltd. assumes no responsibility for the consequences of use without consideration for such information nor use beyond it. Information mentioned in this document is subject to change without notice, apart from that when an agreement is signed, Jiangsu JieJie complies with the agreement.

Products and information provided in this document have no infringement of patents. Jiangsu JieJie assumes no responsibility for any infringement of other rights of third parties which may result from the use of such products and information. This document supersedes and replaces all information previously supplied.



is a registered trademark of Jiangsu JieJie Microelectronics Co., Ltd.

Copyright © 2025 Jiangsu JieJie Microelectronics Co., Ltd. All rights reserved.