



T835H-8A 8A TRIAC

Rev.A.1.1

The T835H-8A triac is suitable for general purpose AC switching. It can be used as an ON/OFF function in applications such as lighting regulation, induction motor starting circuits, and speed control operation in light dimmers, motor speed control. Compared to traditional triacs, T835H-8A provides very high switching capability up to junction temperature of 150°C. By using an internal ceramic pad, T835H-8A has a rated insulation voltage of 2500 VRMS, compliant with UL standards (File ref: E252906). Package TO-220 is RoHS compliant.

Symbol	Value	Unit
$I_{T(RMS)}$	8	A

Parameter	Symbol	Value	Unit
Storage junction temperature range	T_{stg}	-40-150	
Operating junction temperature range	T_j	-40-150	
Repetitive peak off-state voltage ($T_j=25^\circ\text{C}$)	V_{DRM}	800	V
Repetitive peak reverse voltage ($T_j=25^\circ\text{C}$)	V_{RRM}	800	V
RMS on-state current ($T_c=118^\circ\text{C}$)	$I_{T(RMS)}$	8	A
Non repetitive surge peak on-state current (full cycle, $t_p=20\text{ms}$, $T_j=25^\circ\text{C}$)	I_{TSM}	80	A
Non repetitive surge peak on-state current (full cycle, $t_p=16.6\text{ms}$, $T_j=25^\circ\text{C}$)		88	
I^2t value for fusing ($t_p=10\text{ms}$, $T_j=25^\circ\text{C}$)	I^2t	32	A^2s
Critical rate of rise of on-state current ($I_G=2 \times I_{GT}$, $f=100\text{Hz}$, $T_j=150^\circ\text{C}$)	di/dt	100	$\text{A}/\mu\text{s}$
Peak gate current ($t_p=20\mu\text{s}$, $T_j=150^\circ\text{C}$)	I_{GM}	4	A

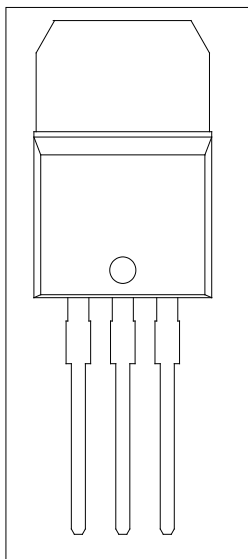
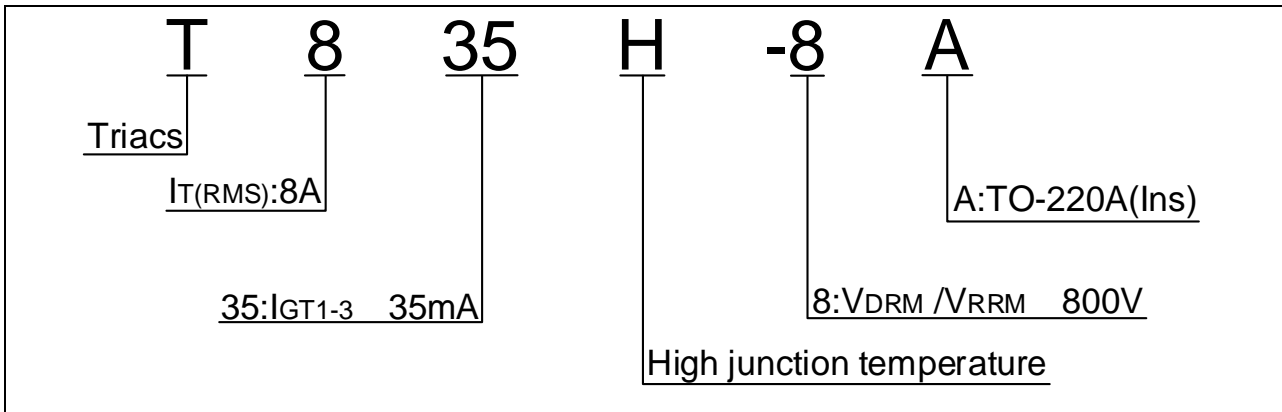


FIG.1: Maximum power dissipation versus RMS on-state current

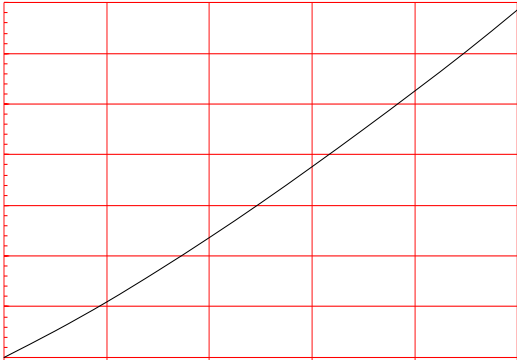
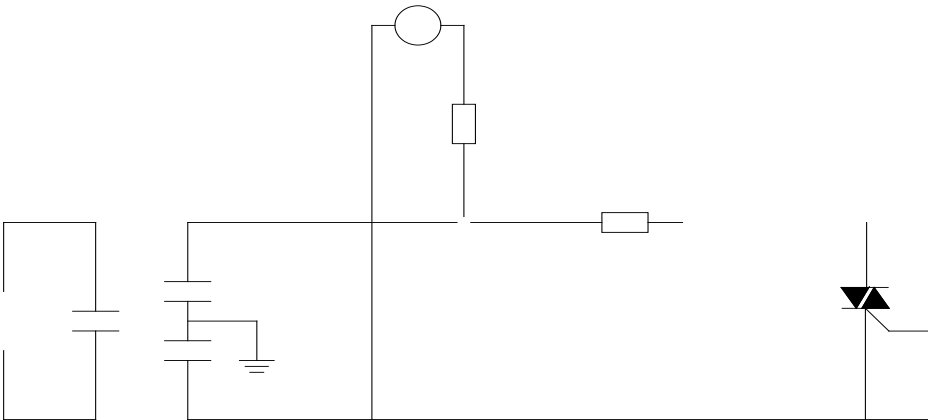
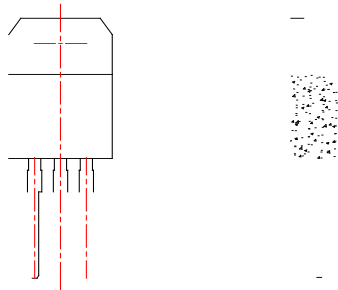


FIG.2: RMS on-state current versus case temperature

FIG.7 Test circuit for inductive and resistive loads to IEC-61000-4-5 standards





Information furnished in this document is believed to be accurate and reliable. However, Jiangsu JieJie Microelectronics Co., Ltd. assumes no responsibility for the consequences of use without consideration for such information nor use beyond it. Inform(d r)7 (o 0 T51 (or)6.9 (m(d i,(J)4 (i)6 (ang)10 (s)4 (u J)4 (i)6 (eJ)4 (i)16 ()9(o 0 c)4 ((m)-3 p(l)6 (i)6 (es)14 (w)16 (i)6 (t)2 (Lt)]TJ