

T3035H-6C

JieJie Microelectronics Co., Ltd.

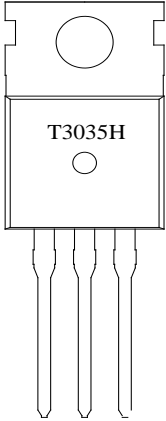
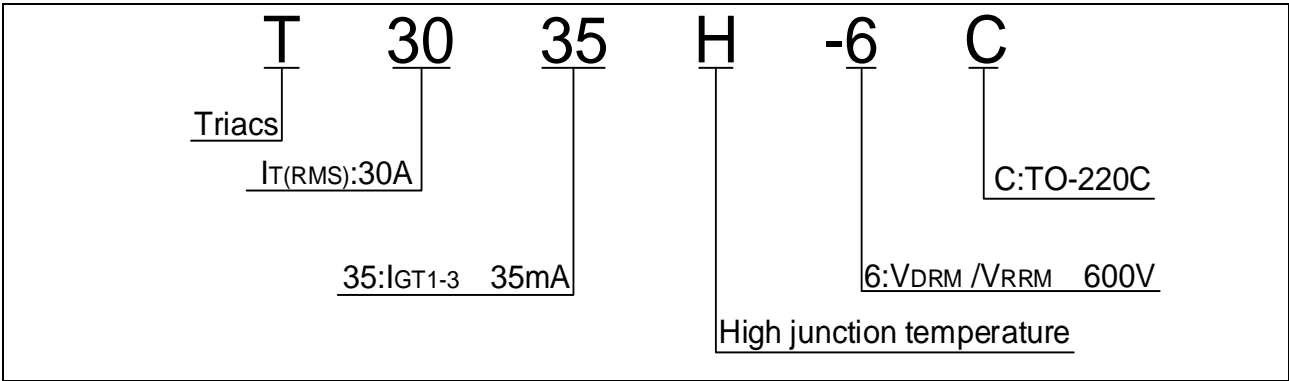


FIG.1: Maximum power dissipation versus RMS on-state current

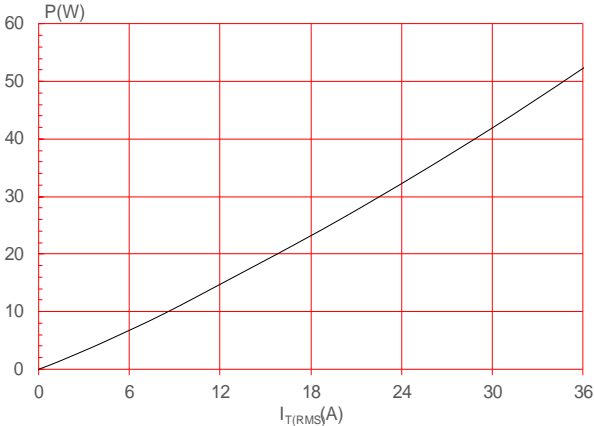


FIG.2: RMS on-state current versus case temperature

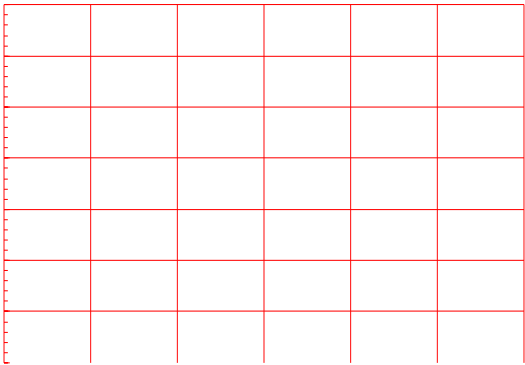
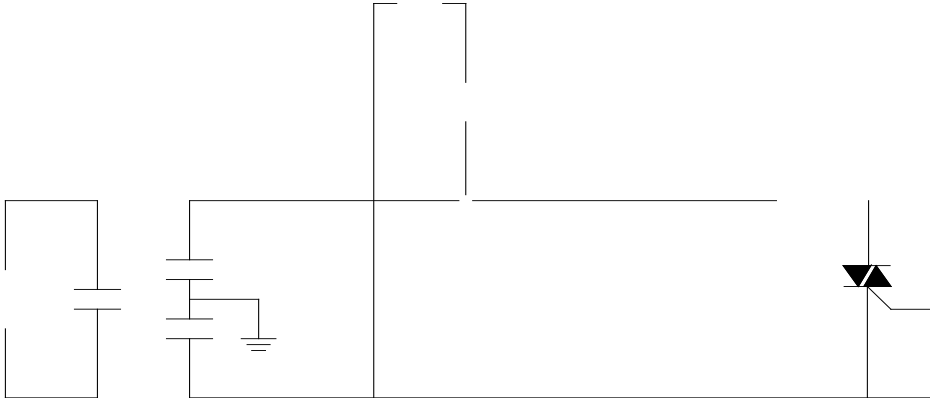


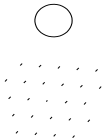
FIG.7 Test circuit for inductive and resistive loads to IEC-61000-4-5 standards eGA24 66m 72



Order code	Voltage V_{DRM}/V_{RRM} (V)	IGT(mA)	Package	Base qty. (pcs)	Delivery mode
		- -			
T3035H-6C	600	35	TO-220C	50	Tube

Document Revision History

Date	Revision	Changes
Apr.10, 2023	A.1.0	Last updated
Oct.15, 2025	A.1.1	Revise PACKAGE MECHANICAL DATA



T3035H-6C

JieJie Microelectronics Co., Ltd.