

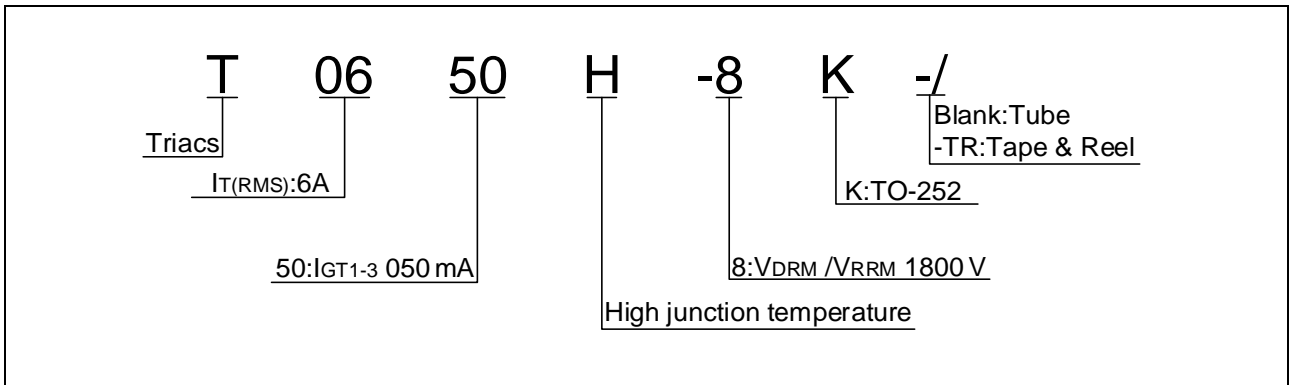


|  |          |   |    |
|--|----------|---|----|
| Peak pulse voltage<br>( $T_j=25$ ; non-repetitive, off-state; FIG.8) | $V_{pp}$ | 4 | kV |
|--|----------|---|----|

ELECTRICAL CHARACTERISTICS (unless otherwise specified)

| Symbol   | Test Condition        | Quadrant | Value |    | Unit |
|----------|-----------------------|----------|-------|----|------|
| $I_{GT}$ | $V_D=12V R_L=33$      | - -      | MAX.  | 50 | mA   |
| $V_{GT}$ |                       | - -      | MAX.  | 1  | V    |
| $V_{GD}$ | $V_D=V_{DRM} T_j=150$ |          |       |    |      |

ORDERING INFORMATION



MARKING

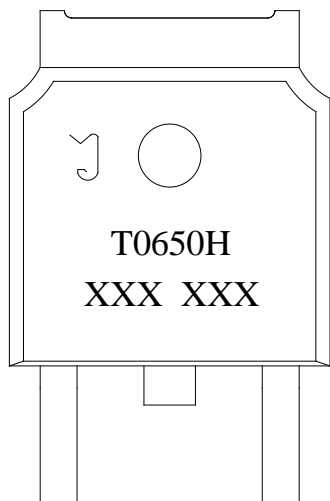
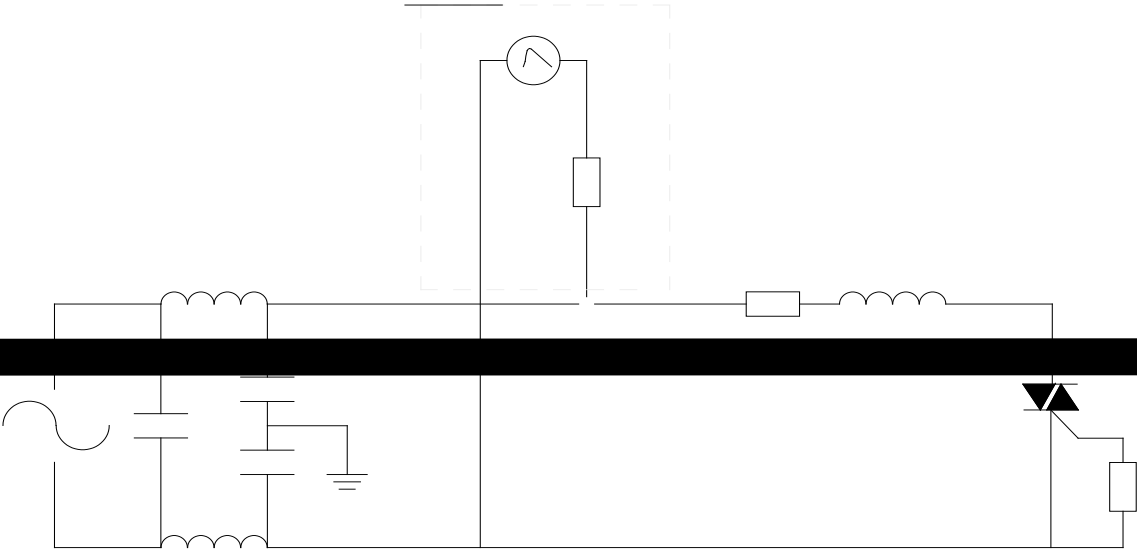


FIG.1: Maximum power dissipation versus RMS on-state current

FIG.2: RMS on-state current versus case temperature

0.5FIG.7:

FIG.8 ÖTest circuit for inductive and resistive loads to IEC-61000-4-5 standards



## ORDERING INFORMATION

| Order code   | Voltage<br>$V_{DRM}/V_{RRM}$ (V) | IGT(mA) | Package | Base qty.<br>(pcs) | Delivery<br>mode |
|--------------|----------------------------------|---------|---------|--------------------|------------------|
|              |                                  | - -     |         |                    |                  |
| T0650H-8K    | 800                              | 50      | TO-252  | 80                 | Tube             |
| T0650H-8K-TR |                                  |         |         | 2,500              | Tape & Reel      |

## Document Revision History

| Date         | Revision | Changes                        |
|--------------|----------|--------------------------------|
| Apr.11, 2023 | A.1.0    | Last updated                   |
| Oct.21, 2025 | A.1.1    | Revise PACKAGE MECHANICAL DATA |



T0650H-8K

650H-8K

