



T0620H-8C 6A TRIAC

Rev A.1.1

DESCRIPTION:

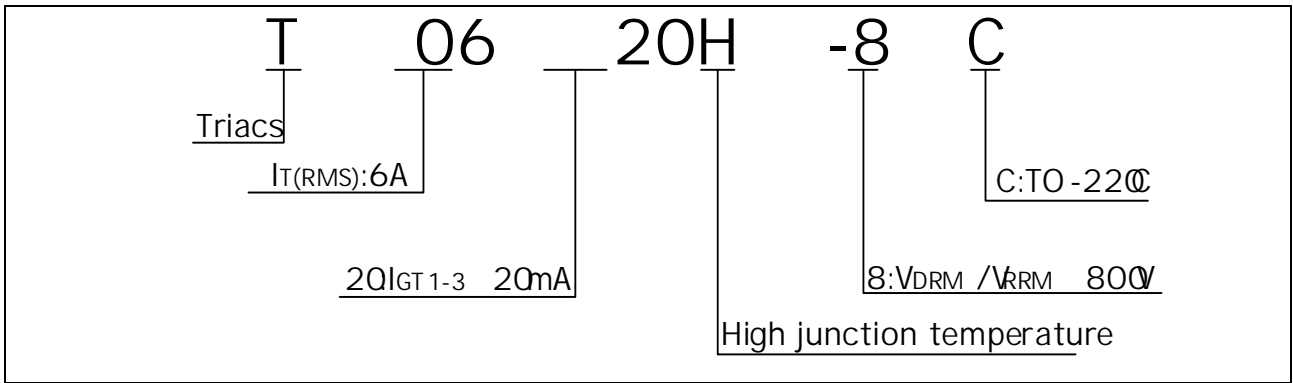
The T0620H8C triac is suitable for general purpose AC switching. It can be used as an ON/OFF function in applications such as heating regulation, induction motor starting circuits, for phase control operation in light dimmers,

... (partially obscured text)

... (partially obscured text)

T0620H-8C

ORDERING INFORMATION



MARKING

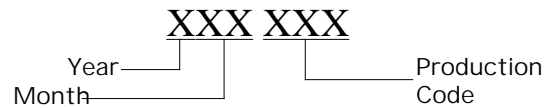
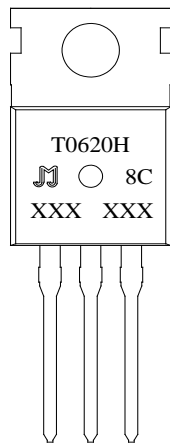
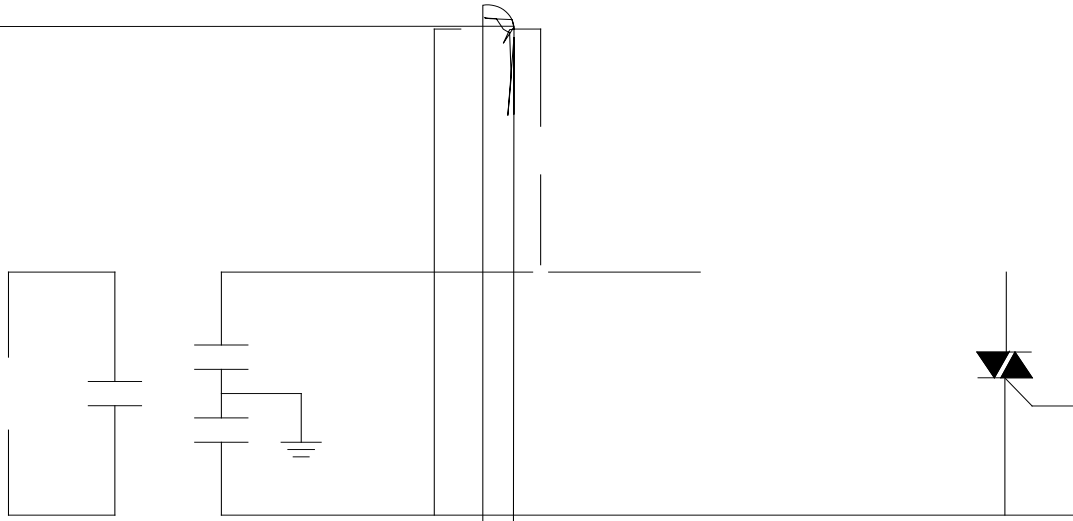


FIG.1:

FIG.7 Test circuit for inductive and resistive loads to IEC 61000-5 standards





PACKAGE MECHANICAL DATA



