



U620H -8A 6A RC

R A.1.1

DESCRIPTION:

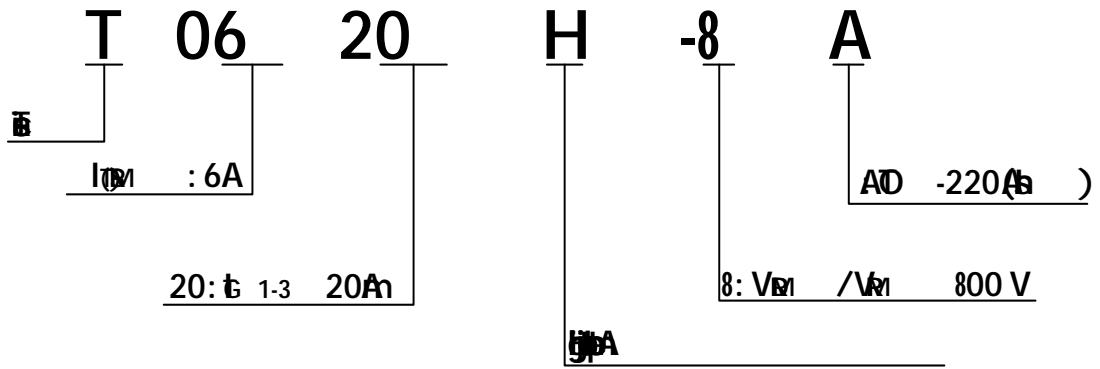
The U 620H-8A is a
 high speed
 6A RC
 U 620H-8A is a
 150C
 U 620H-8A is a
 2500 (E 252906).
 U -220A is a

MAIN FEATURES

ABSOLUTE MAXIMUM RATINGS

Symbol	Parameter	Value	Unit
T_{stg}	Storage Temperature	-55 to +125	°C
T_{op}	Operating Temperature	-55 to +125	°C
T_{j}	Junction Temperature	-55 to +125	°C
V_{DS}	Drain-Source Voltage	100	V
V_{GS}	Gate-Source Voltage	±20	V
I_{D}	Drain Current (DC)	6	A
$I_{D, pulsed}$	Drain Current (Pulsed)	10	A
P_{tot}	Total Power Dissipation	1.5	W
$R_{\theta(j-c)}$	Thermal Resistance (junction to case)	1.5	°C/W
$R_{\theta(c-a)}$	Thermal Resistance (case to ambient)	1.5	°C/W
$R_{\theta(j-a)}$	Thermal Resistance (junction to ambient)	1.5	°C/W

ORDERING INFORMATION



U620H 8A

è Jè Mb

Co , t

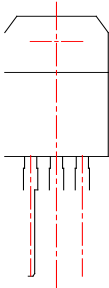
ORDERING INFORMATION

M	V _{DR} / V _R (V)	G (An)	S	B _q (p)	D _q (h)
		- -			
U 620H-8A	800	20	U -220A(p)	50	Tb

De

D	R	S
A .10, 2023	A 1.0	#
011, 2025	A 1.1	Rb ■■

PACKAGE MECHANICAL DATA



-



-

