



## DESCRIPTION:

The T0450H-6H triac is suitable for general purpose AC switching. It can be used as an ON/OFF function in applications such as heating regulation, induction motor starting circuits, for phase control operation in light dimmers, motor speed controllers. Compared to traditional triacs, T0450H-6H provides a very high switching capability up to junction temperatures of 150°C. From T2 terminals to external heatsink. Package TO-251 is RoHS compliant.

## MAIN FEATURES

### ABSOLUTE MAXIMUM RATINGS

Storage junction temperature range	$T_{stg}$	-40-150	
Operating junction temperature range	$T_j$	-40-150	





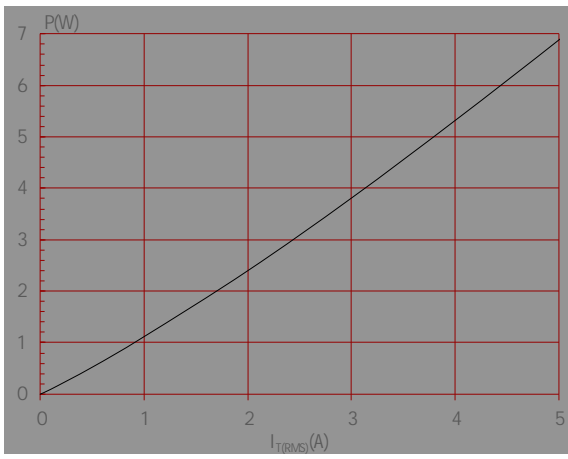
---

ORDERING INFORMATION

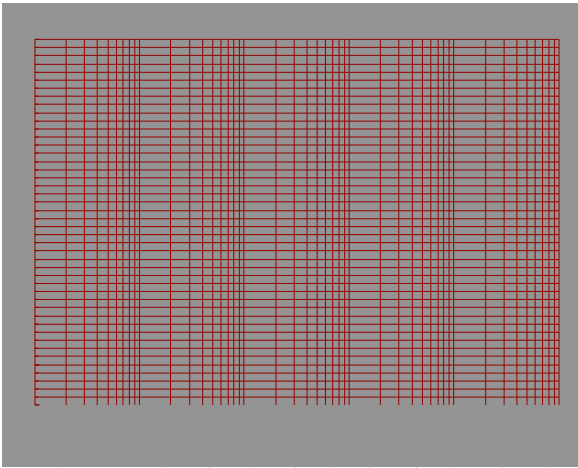
T 04 50 H -6 H



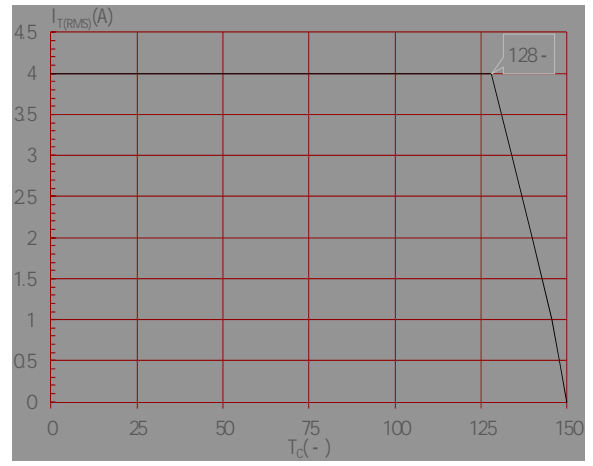
Maximum power dissipation versus RMS on-state current



Surge peak on-state current versus number of cycles



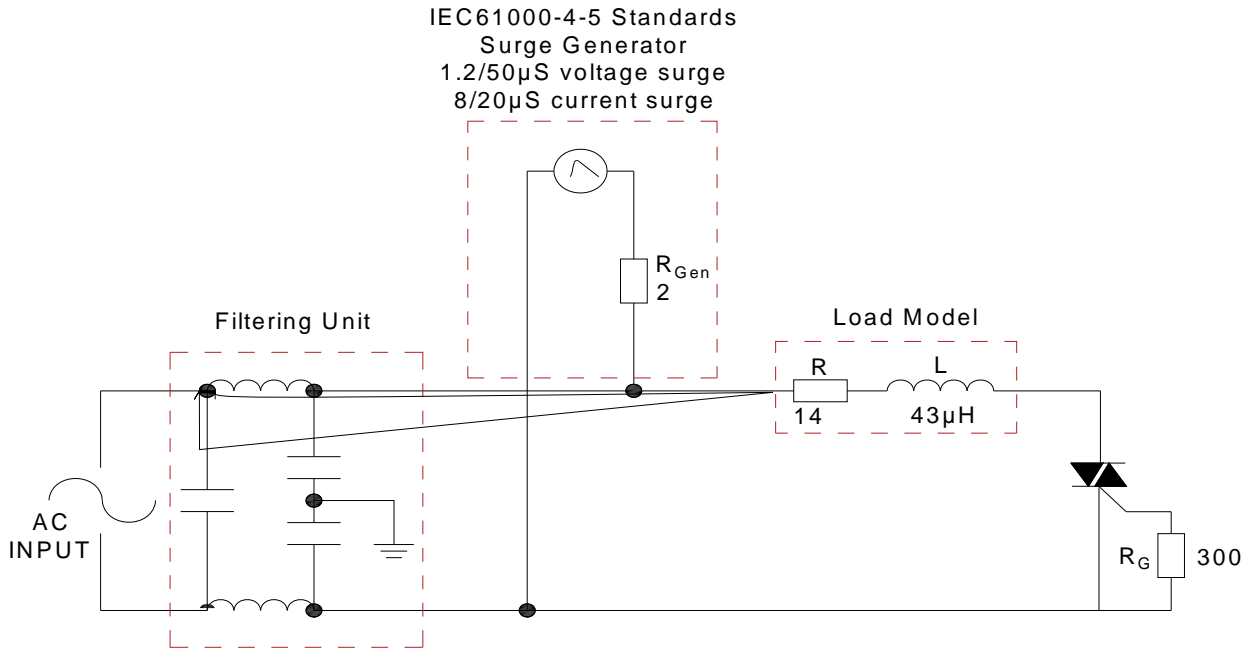
RMS on-state current versus case temperature



On-state characteristics



FIG.7 Test circuit for inductive and resistive loads to IEC-61000-4-5 standards





## ORDERING INFORMATION

		H I J			

Date	Revision	Changes
Apr.10, 2023	A.1.0	Last updated
Oct.17, 2025	A.1.1	Revise PACKAGE MECHANICAL DATA



---

## PACKAGE MECHANICAL DATA

