



>L\$\$, I '\$", 5'GYbg]h]jY'G7F

FYj'5'&"%

DESCRIPTION:

The JX008U SCR provides high dV/dt rate with strong resistance to electromagnetic interference. It is especially recommended for use on residual current circuit breaker, straight hair, igniter etc. Complying with UL standards (File ref: E252906). Package TO-92 is RoHS compliant.

MAIN FEATURES

Symbol	Value	Unit
$I_{T(RMS)}$	0.8	A
V_{DRM} / V_{RRM}	800	V
I_{GT}	200	μA

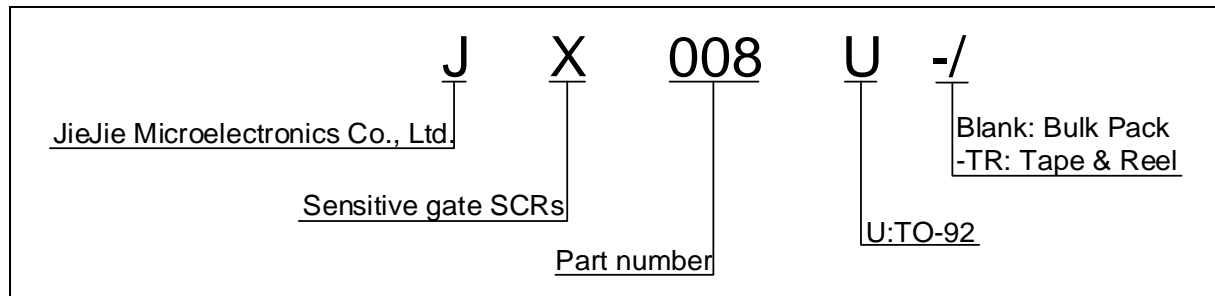
ABSOLUTE MAXIMUM RATINGS

>L\$\$, I''



>]Y>]Y' A]WfcY`YWhfcb]Wg'7c"z'@hX"

ORDERING INFORMATION



>L\$\$, I ' '



>]Y>]Y' A]WfcY`YWhfcb]Wg'7c"z'@hX"

::; "%.'Maximum power dissipation versus RMS on-state current

::; "&.'RMS on-state current versus case temperature

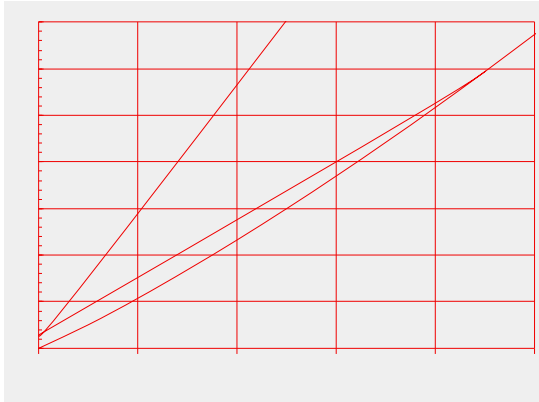
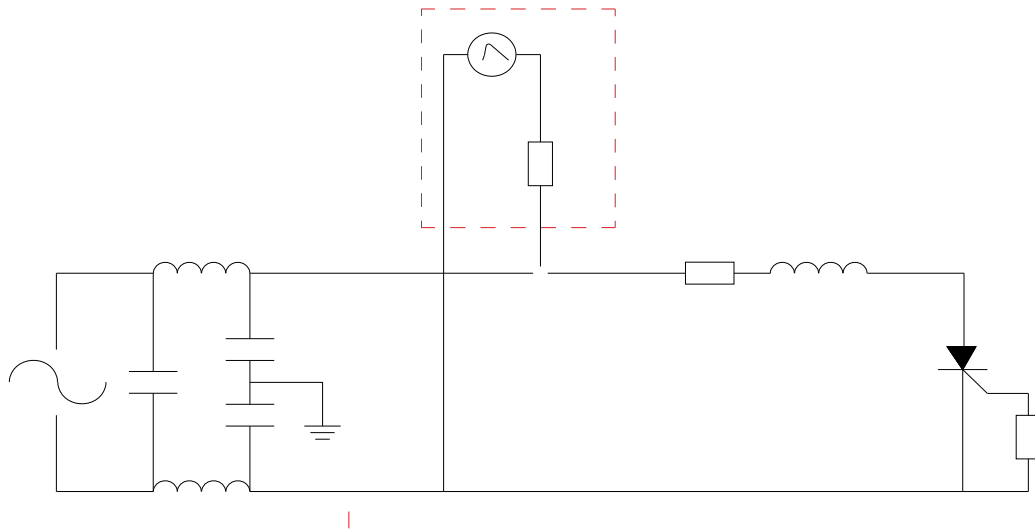




FIG.7 Test circuit for inductive and resistive loads to IEC-61000-4-5 standards.





ATION

hU[Y' JFFA'flJL'	= ; Hfl 5L'	DUW_U[Y'	6UgY'ehm" fldWgL'	8Y]jYfm' a cXY'
,\$\$'	@&\$\$'	HC!-&'	%z\$\$\$'	6 i`_'DUW_'
			&z\$\$\$'	HUdY'/'FYY'

8cWi a Ybh'FY j]g]cb'<]ghcfm'

>L\$\$, I''

>L\$\$, I''



>]Y>]Y'A]WfcY`YWhfcb]Wg'7c"z'@hX"

DELIVERY MODE

D57?5;9'

C I H@=B9'

>L\$\$, I''

>]Y>]Y'A]WfcY`YWhfcb]Wg'7c"z'@hX"

TEL