



JCT1275SJ 75A SCR

Rev. A.2.1

DESCRIPTION:

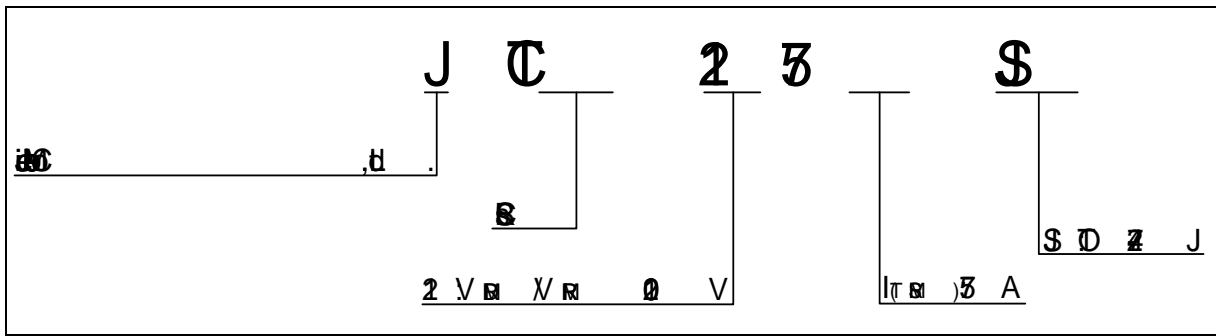
This device is a 75A SCR, which is a silicon controlled rectifier. It is designed for use in power electronics applications. The device is characterized by its high current capability and low forward voltage drop. It is available in a TO-18 package.

MAIN FEATURES

Symbol	Parameter	Value
I_{T}	Forward Current	A
V_{T} / V_{R}	Forward Voltage / Reverse Voltage	V
I_G	Gate Current	0.8 A

<p>MT j# 2)</p>	<p>Pp</p>	<p>1</p>	<p>W</p>
<p>pv</p>	<p>Pp</p>	<p>2</p>	<p>W</p>
<p>pv (j# ;0 -p -B</p>	<p>Vp</p>	<p>1</p>	<p>k</p>

ORDERING INFORMATION



MARKING

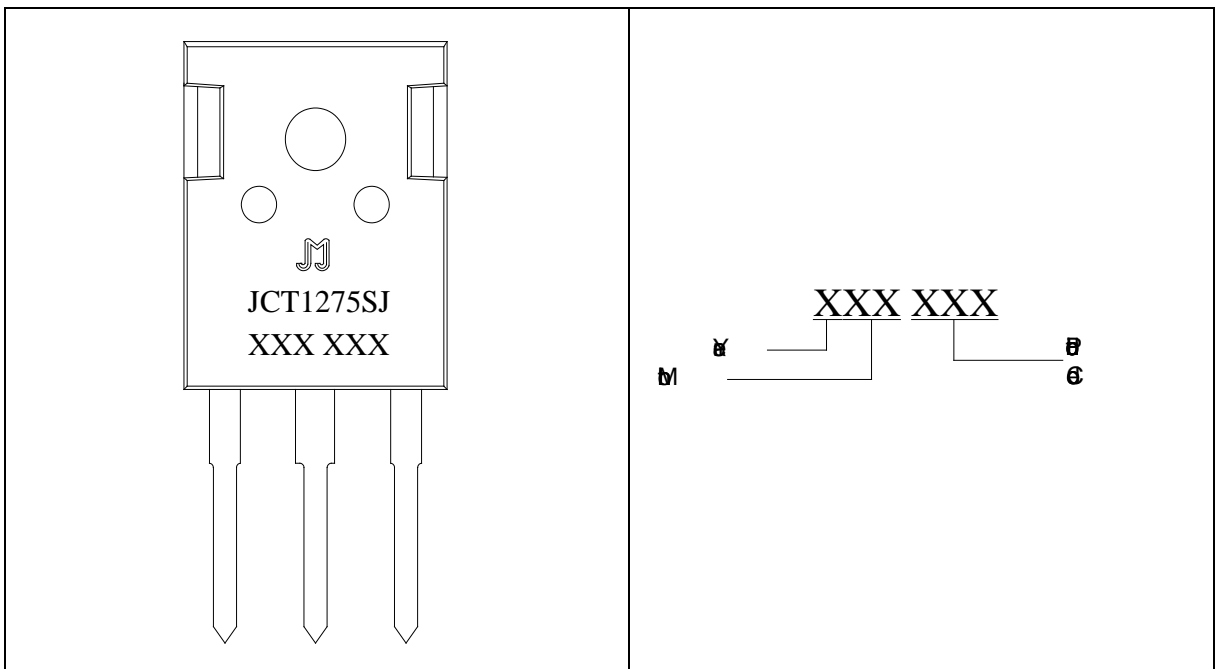


FIG.1: $P(W)$
 $I_{T(RMS)}(A)$

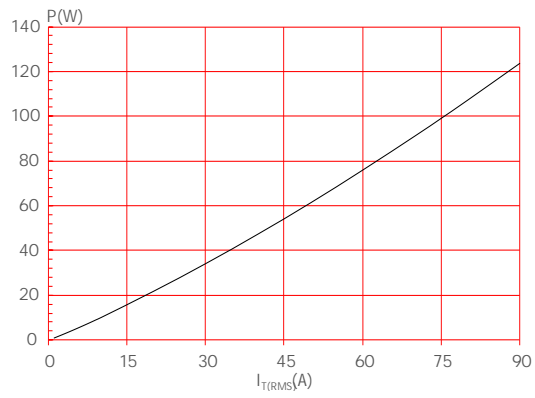


FIG.2: $P(W)$
 $I_{T(RMS)}(A)$

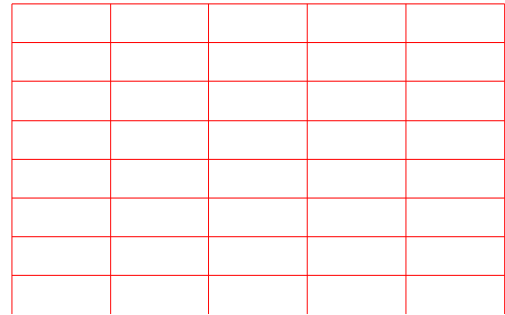
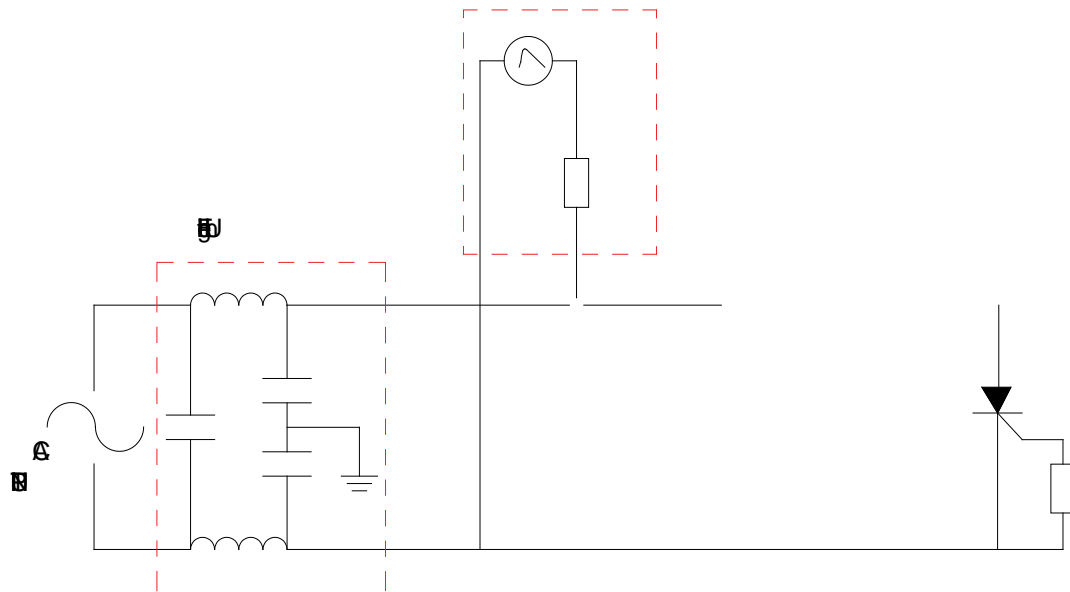


FIG.7

-0

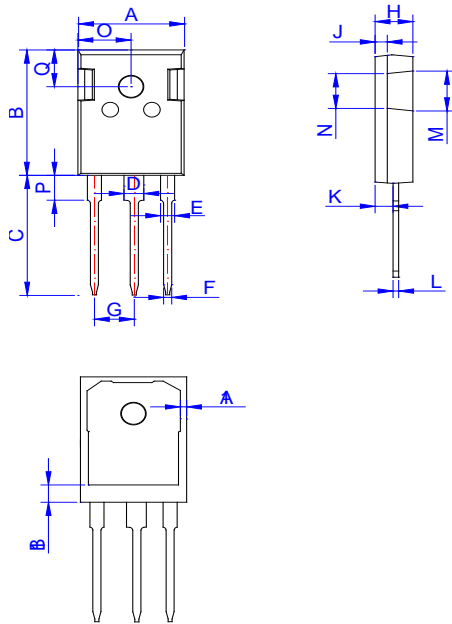
51



ORDERING INFORMATION



PACKAGE MECHANICAL DATA



R	D					
	M			b		
	M	φ	M	M	φ	M
A	0		0	0		0
B	0		0	0		0
C	0		0	0		0
D	0		0	0		0
E	0		0	0		0
F	0		0	0		0
G		0			0	
H	0		0	0		0
J	0		0	0		0
K	0		0	0		0
L	0		0	0		0
M						
N	3					

