

\$ & - 7 8 \$ 7 5 , \$ &

5HY \$

^ Z/Wd/KEW

7KH \$&-7 8 WUWDEQLV IRXUL JHQHUDO SXUSRVH
 \$& VZLWFKLQJ ,W FDQ EH XVHG DV DQ 21 2)) IXQFWLRQ LQ
 DSSOLFDWLRQV VXFK DV KHDWLQJ UHJXODWLRQ LQGXFWLRQ
 PRWRU VWDUWUOLSKDWHFRQWURO RSHUDWLRQ LQ
 OLJKW GLPPHUV FRWUROVSHUHG FKH \$&-7 8
 HPEHGV D 796 VWUXFWXUH WR DEVRUE WKH LQGXFWLYH WX
 HGHUJ\ VXFK DV WKRVH GHVFULEHG LQ WKH ,(&
 VWDQGDUGV 3DFNDJH 72 LV 5R+6 FRPSOLDQW

D /E & dhZ ^

^K>hd D y/DhD Z d/E'^

3DUDPHWHU	6\PERO	9DOXH	8QL
6WRUDJH MXSHFWLWXUWHLPD QJHVWJ		7	
2SHUDWLQJWHKPSHWLDRQXUH UDQJH		7	
5HSHWLWLYH SHDN RMI VWDWH ₅₀ YROWDJH		7	9
5HSHWLWLYH SHDN WHYHU ₉₅₆ YROWDJH		7	9
506 RQ VWDWH ₀ FXUUHQW	7 ,7 506		
1RQ UHSHWLWLYH VXUJH SHDN RQ VWDWH FXUUHQW IXOO F _s \F _W M _W			
1RQ UHSHWLWLYH VXUJH SHDN ⁷⁶⁰ RQ VWDWH FXUUHQW IXOO F _s SP _{0E} , N ₀ Q _a H"ti0Eb"t , 'Nó "'t , 'Nó d"(H"ti0L b FM\$			

\$ & - 7 8

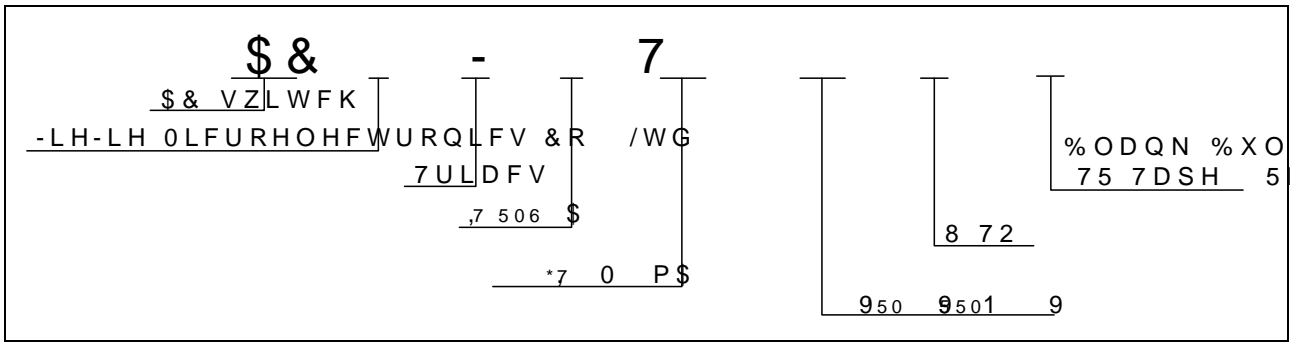
- LH - LH 0 L F U R H O H F W U R Q L

3 H D N S X O V H Y R O W D J H

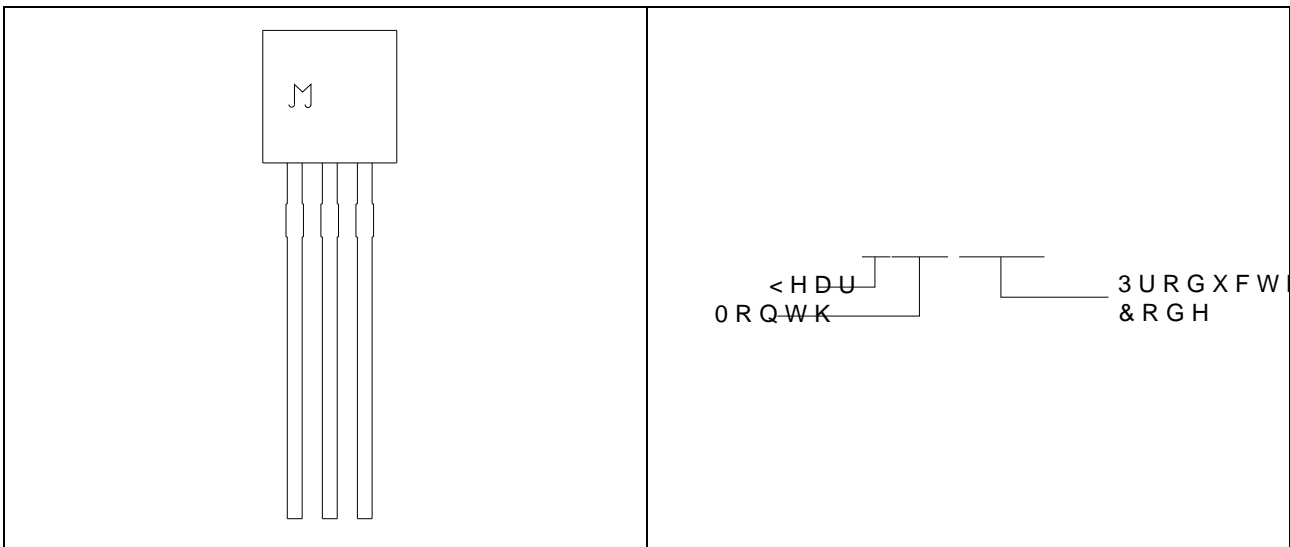
7 M

Q R Q R U C H S B I W L M Y L Y H R I R I V W D M R O E h U H ° S H I p F U O A < 0 0 0 0 @ 0 0 0 0

KZ Z/E' /E&KZD d/KE

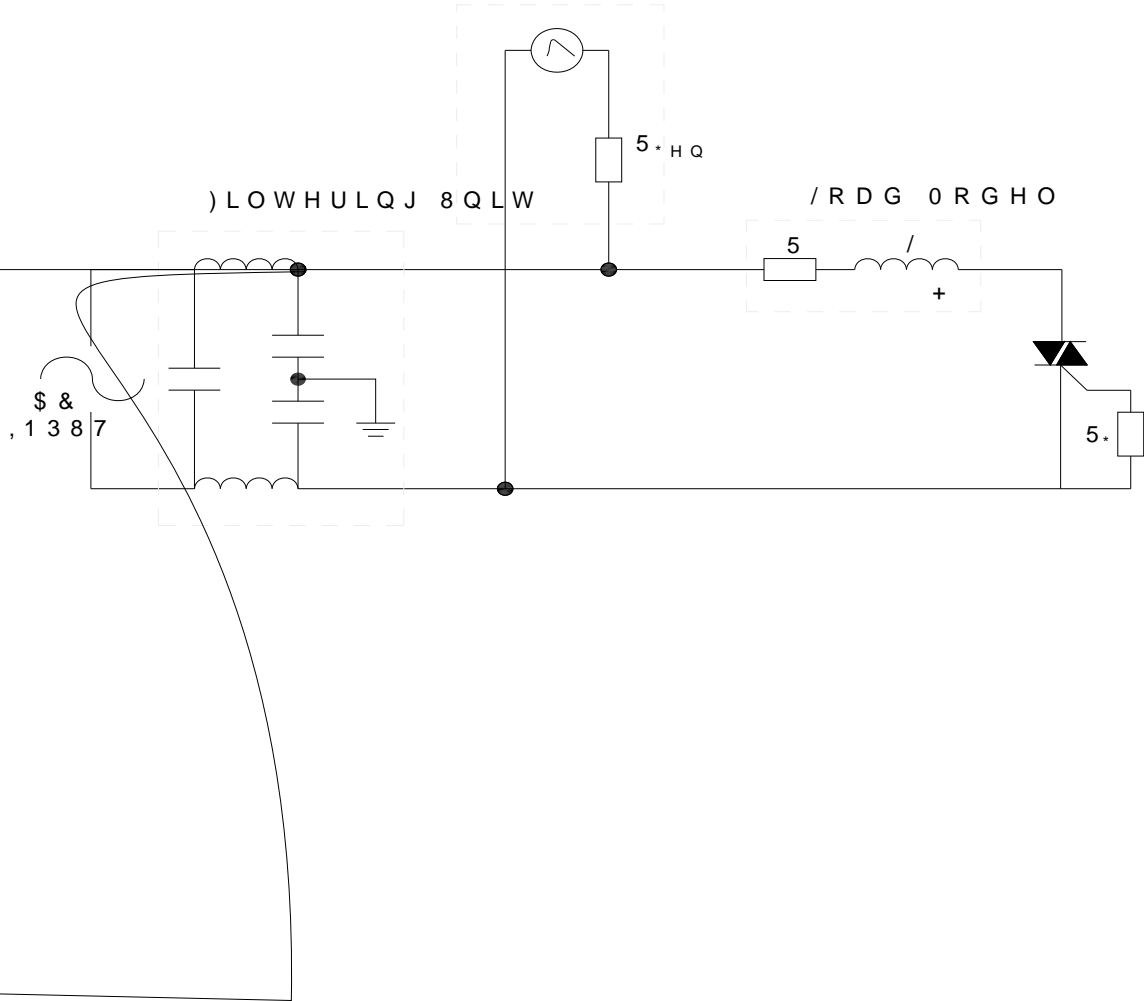


D Z</E'



), * Ö7HVW FLUFXLW IRU LQGXFWLYH DQG UMDQGDUGV OR

, (& 6WDQGDUGV
6XUJH *HQHUDWRU
6YROWDJH VXUJH
6FXUUHQW VXUJH



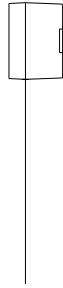
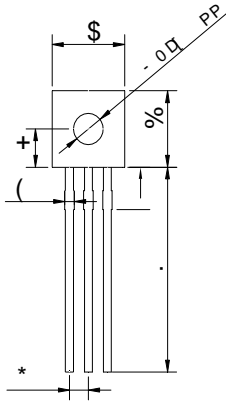
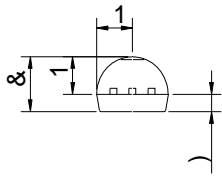
KZ Z/E' /E&KZD d/KE

2UGHU FR	9ROWDJH 9'50 9'50 9	, * 7 P\$	3DFND	%DVH SFV	'HOLYHU\ PRGH
\$ & - 7 8			72		%XON 3DFN
\$ & - 7 8 75					7DSH 5HHO

'RFXPHQW 5HYLVLRQ +LVWRU\

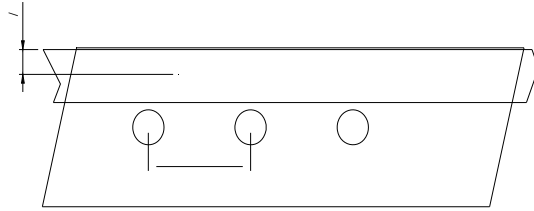
'DWH	5HYLVLRQ	&KDQJHV
\$SU	\$	/DVW XSGDWHG
0DU	\$	5HQH&.\$*(0(&+\$1,&\$/'\$7\$
6HSW	\$	5HYLVLRQ.\$*(0(&+\$1,&\$/'\$7\$

W < ' D , E / > d



>/s Zz DK

3\$&.\$*(287/,1(%\$* 3&6	,11(5 %2; 3&6	&\$5721 %2; 3&6
72	%XON 3DFN			



5HI	'LPHQVLRQV					
	0LOOLPHWHUV			,QFKHV		
	0LQ	7\S	0D[0LQ	7\S	0D[
3						
3						
3						
3						
, 3						
) Ä)						
))						
:						
:						
:						
:						
,						
, +						
/						
+						
+ Ä+						

,QIRUPDWLRQ IXUQXPHQW ILQ WKOLHGRHG WR EH DFFXUDWH I
 -LDQJVV -LH-LH 0LRRHOWHG WDVROLFHV CLR VUHRUS ROKHLE ERQVHT
 RI XVH ZLWKRXW FRQVLGHUDWLRQ IRG MWFKQLQ IRUPDWLRQ
 LQ WKLV GRFXPHQW LQJYXZELMHFRXWRQRWLFH DSDUW IURP V
 VLJQH G -LDQJVSOLHVLZILWRKPWKH DJUHHPHQW
 3URGXFVV DQG LQIRURDWKLRQ GRURXFLGHG KDYH QR LQIULQJ
 -LDQJVV -LH-LH DVVXIPHLOQR\URVSDQWIRQKHQJHLPJKWW RI W
 SDUWLHV ZKLFK PDKXVXROIW XURKPSWB B WWRQD QK ILQ GRFXPH
 VXSHUVHGHV DQG UHSODFHV DOO LQIRUPDWLRQ SUHYLRXV
 LV D UHJLVWHUHGDQJDXGLHDUN RUF-URHOWHG WURQLFV & I
 &RS\ULJKW < -LDQJFURHOHEMURQUEYK&RV U/HMCHUSYHG