



JVR431

Shunt Voltage Reference

### Description

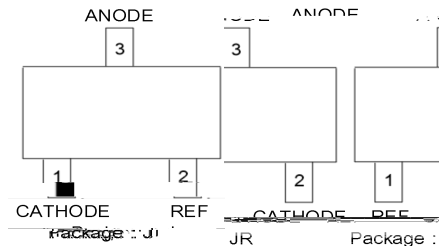
### Features and Benefits

o o

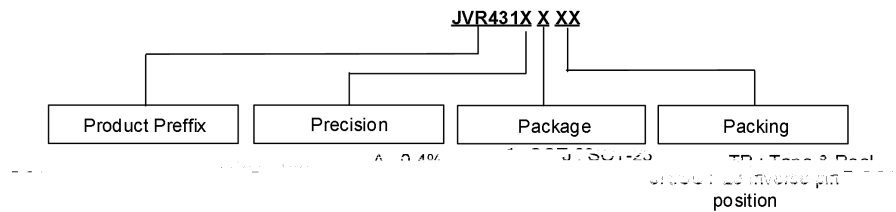
o

### Pin Assignment

### Applications



### Ordering Information



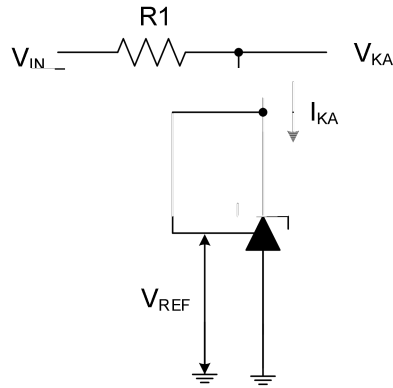
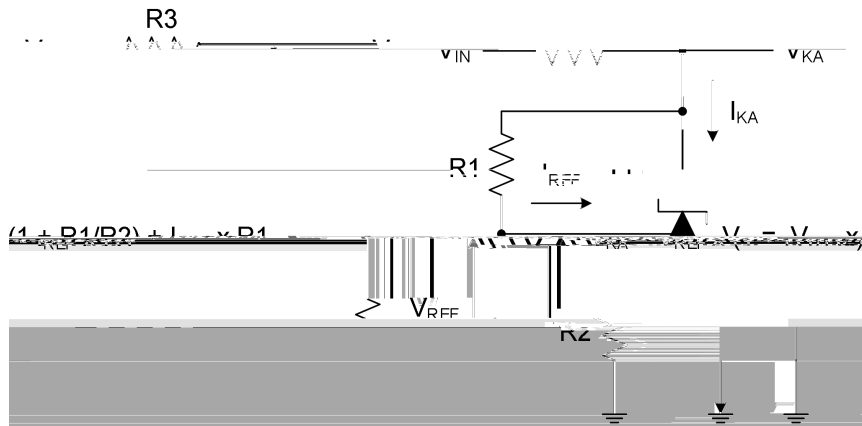
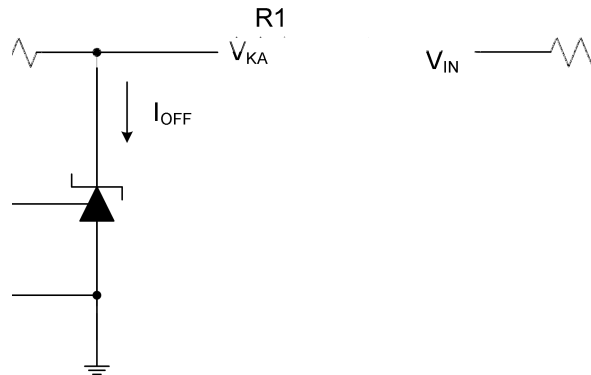
Product Name	Package	Marking	MSL	TJ (°C)	Media	Quantity (pcs)
--------------	---------	---------	-----	---------	-------	----------------



500V Voltage Reference

Fig. 1: Function Blocks



**Electrical Characteristics**

**Fig. 2: Test Circuit 1 for  $V_{KA} = V_{REF}$** 

**Fig. 3: Test Circuit 2 for  $V_{KA} > V_{REF}$** 

**Fig. 4: Test Circuit 3 for  $I_{OFF}$**



**JVR431**

**Shunt Voltage Reference**

## Performance Characteristics



JVR431

Shunt Voltage Reference

---

## Performance Characteristics

---

Fig. 11: Small Signal Voltage Gain vs. Frequency

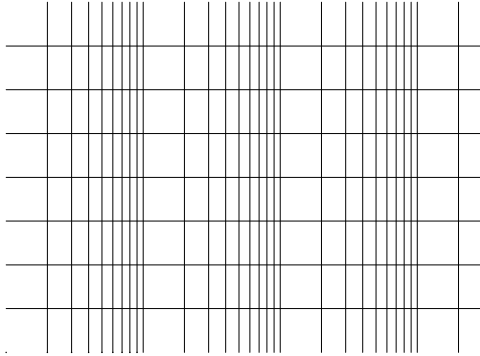


Fig. 12: Reference Impedance vs. Frequency

Fig. 13: Stability Boundary Conditions (Cathode Current vs. Load Capacitance)



## Shunt Voltage Reference



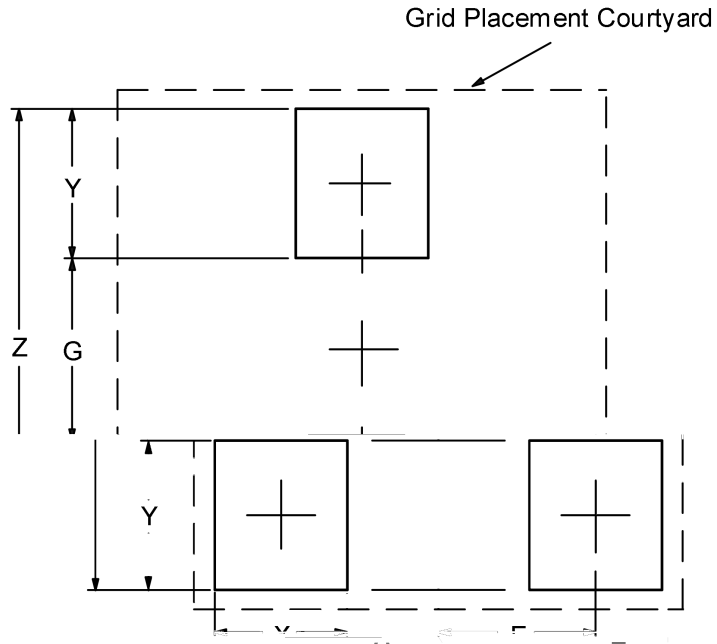


JVR431

Shunt Voltage Reference

## Suggested Pad Layout

Package Type: SOT-23





**JVR431**

**Shunt Voltage Reference**