

23

5

R A.1.2

DESCRIPTION:

23 67AG As 67

6767 6767

67 67 6767

67 67 6767

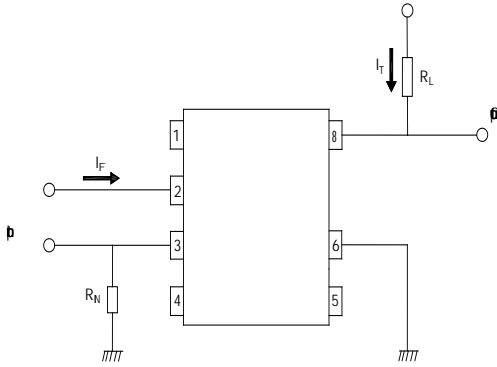
67 6767

67 /

၀၀ - ၀၀ (၀၀ t p=20၀၀)	၀ 1223		6	
	၀ 2223		9	
	၀ 3223		12	
၀		V_b	5000	၀
၀		T_p	-4085	

TEST CIRCUITS

FI ~~0100~~ G .10:

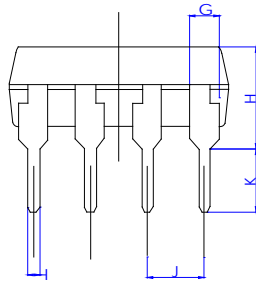
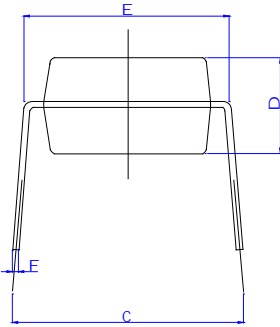
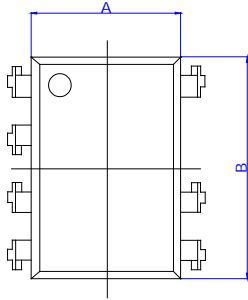


FI ~~0100~~ G .11:

Package Dimension (Unit: mm)

DI

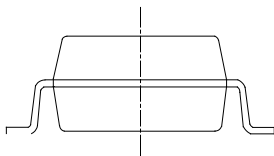
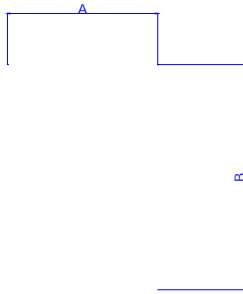
F



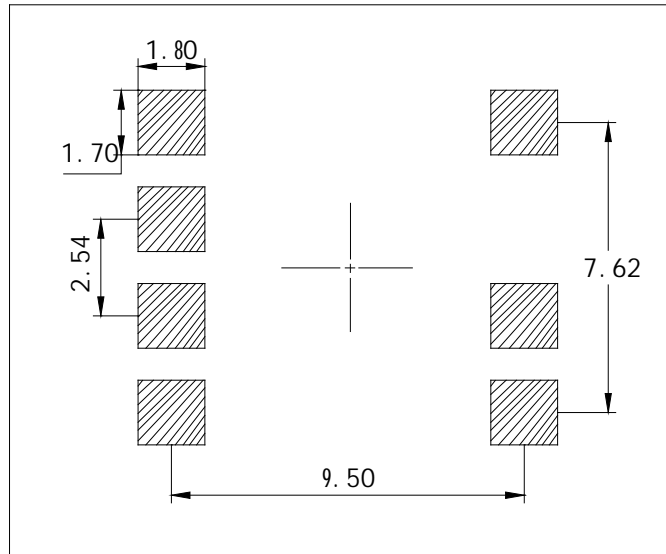
R	D					
	M			b		
	M	ϕ	M	M	ϕ	M
A	6.20		6.80	0.244		0.268
B	9.36		9.96	0.369		0.392
C	7.62		10.16	0.300		0.400
D	3.00		4.00	0.118		0.157
E	7.32		7.92	0.288		0.312
F	0.16		0.36	0.006		0.014
G	0.90		1.50	0.035		0.059
H	3.50		4.80	0.138		0.189
I	0.40		0.60	0.016		0.024
J	2.29		2.79	0.090		0.110
K	2.40		3.40	0.094		0.134

B

L



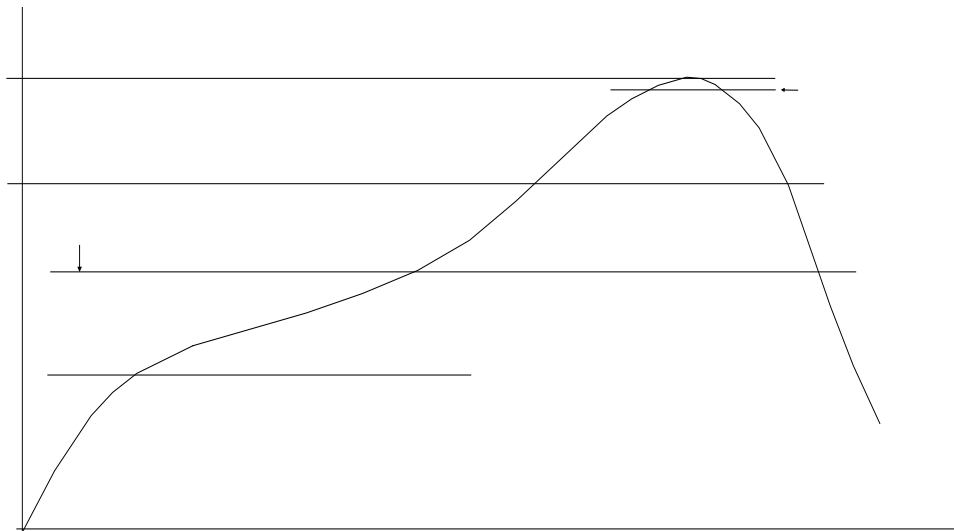
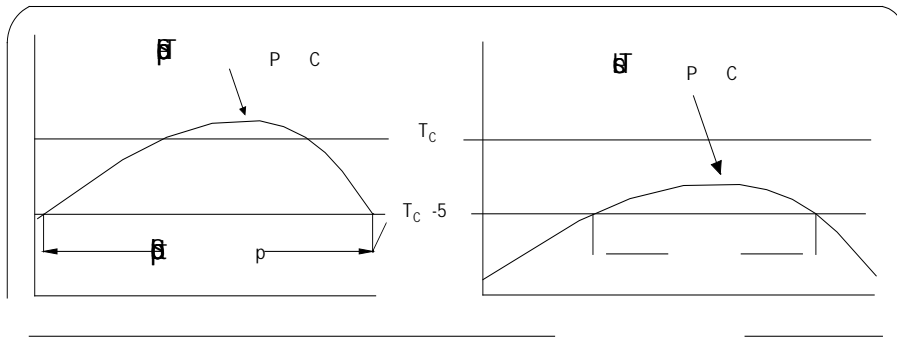
RECOMMENDED SOLDER MASK DIMENSIONS (Dimensions in mm unless otherwise stated)



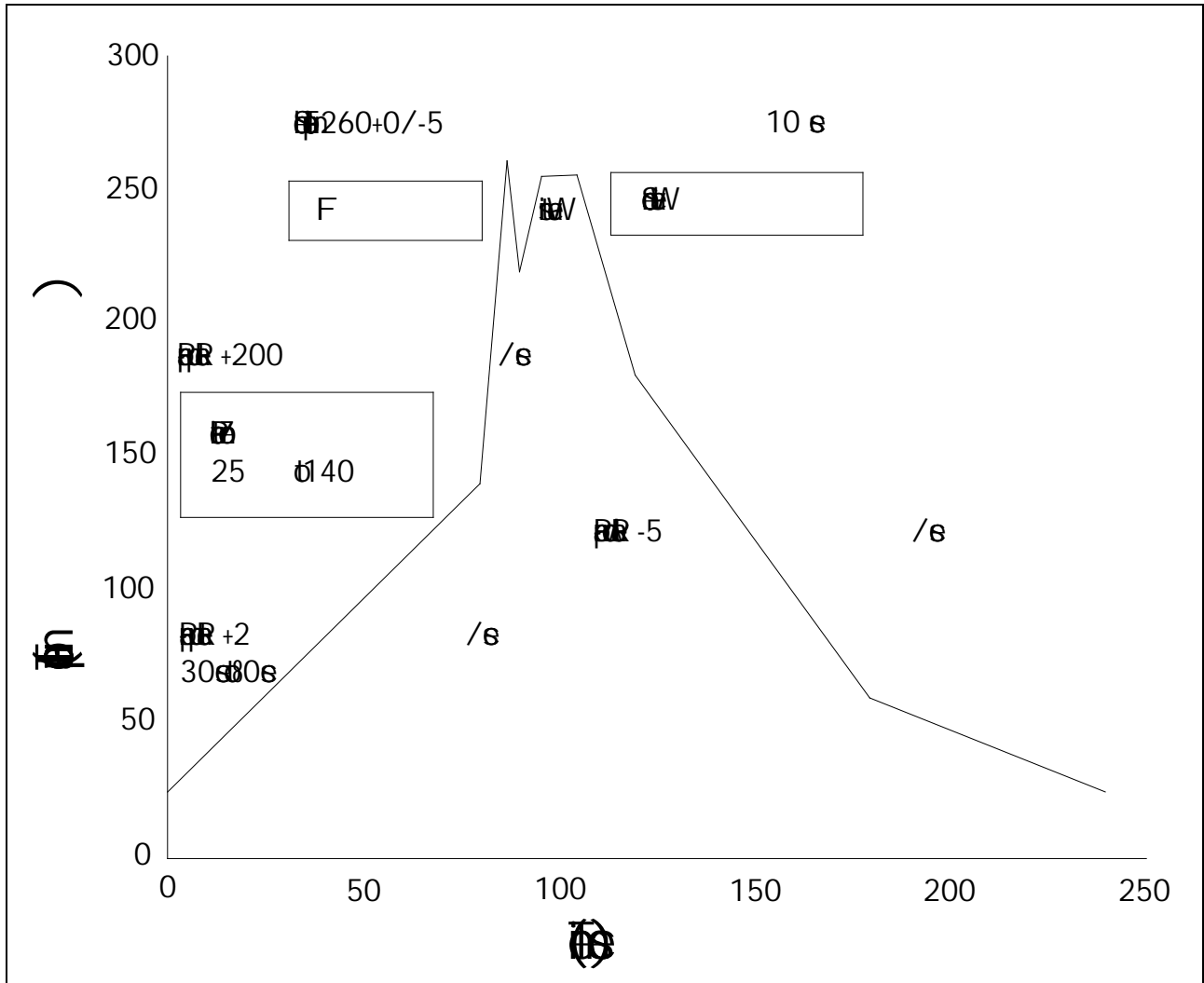
TUBE SPECIFICATIONS (Dimensions in mm unless otherwise stated)

S

REFLOW INFORMATION



WAVE SOLDERING



HAND SOLDERING BY SOLDERING IRON	
S ₁	360 ± 5
S ₂	330

