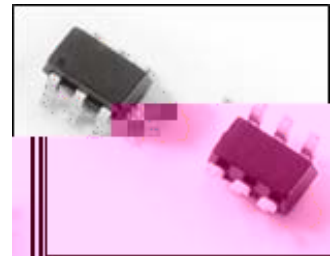
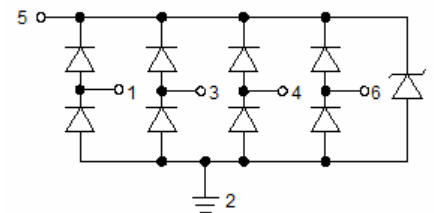
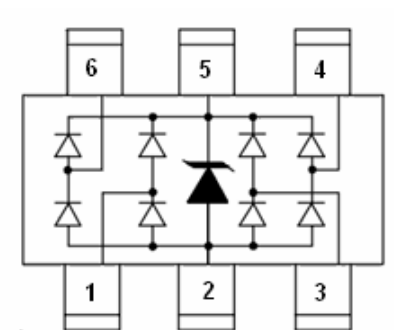


FEATURES:



GENERAL DESCRIPTION:



MAIN APPLICATIONS

PROTECTION SOLUTION TO MEET

ELECTRICAL CHARACTERISTICS

Parameter	Symbol	Conditions	Min	Typ	Max	Unit

RATINGS AND V I CHARACTERISTICS CURVES

FIG.1:V- I curve characteristics (Uni-directional)

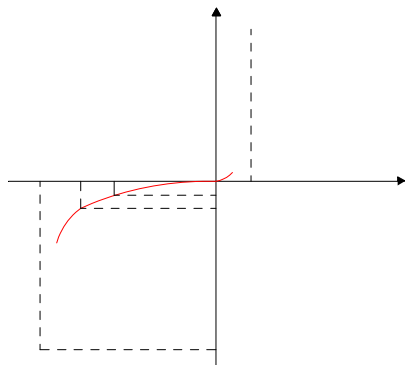


FIG.2: Pulse waveform

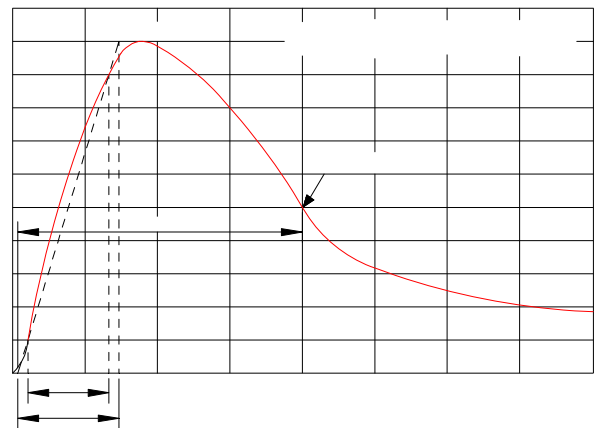


FIG.5: Voltage sweeping of I/O to GND

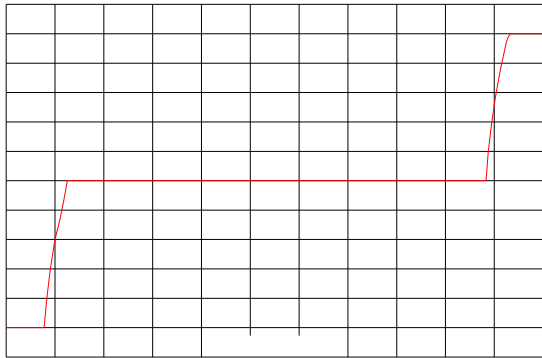


FIG.6: Insertion loss S21 of I/O to GND

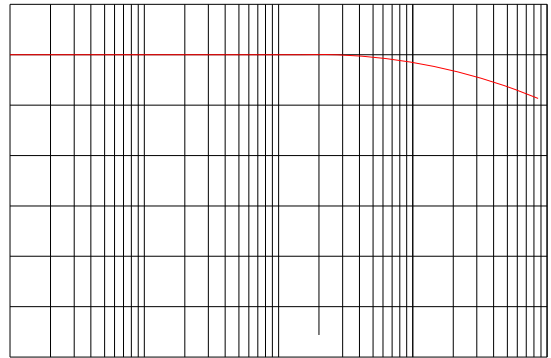


FIG.7: Capacitance vs. voltage of I/O to GND (f=1MHz)

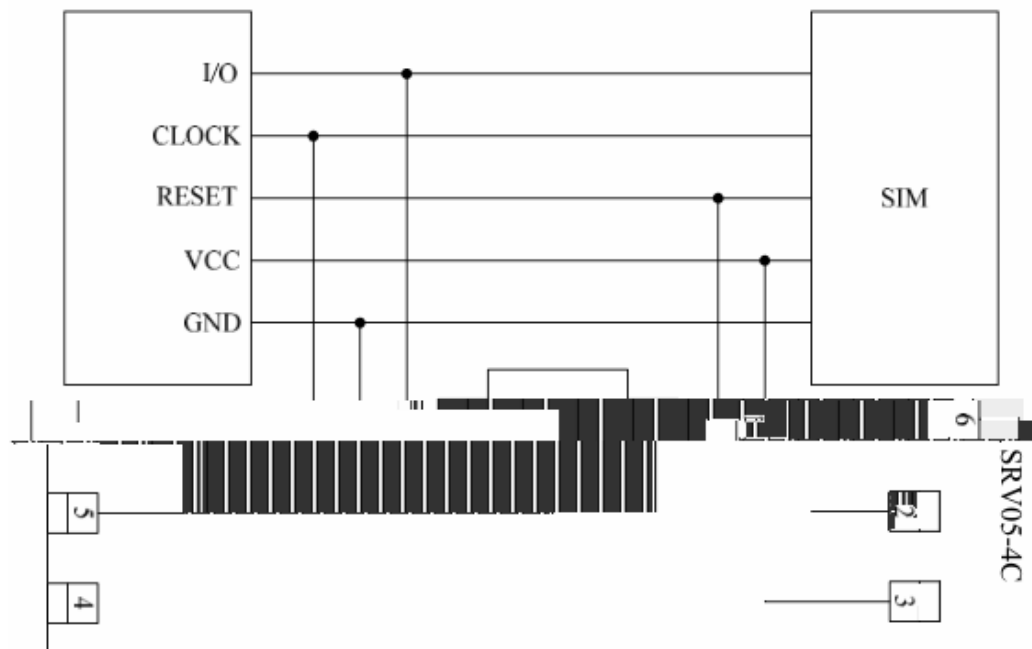
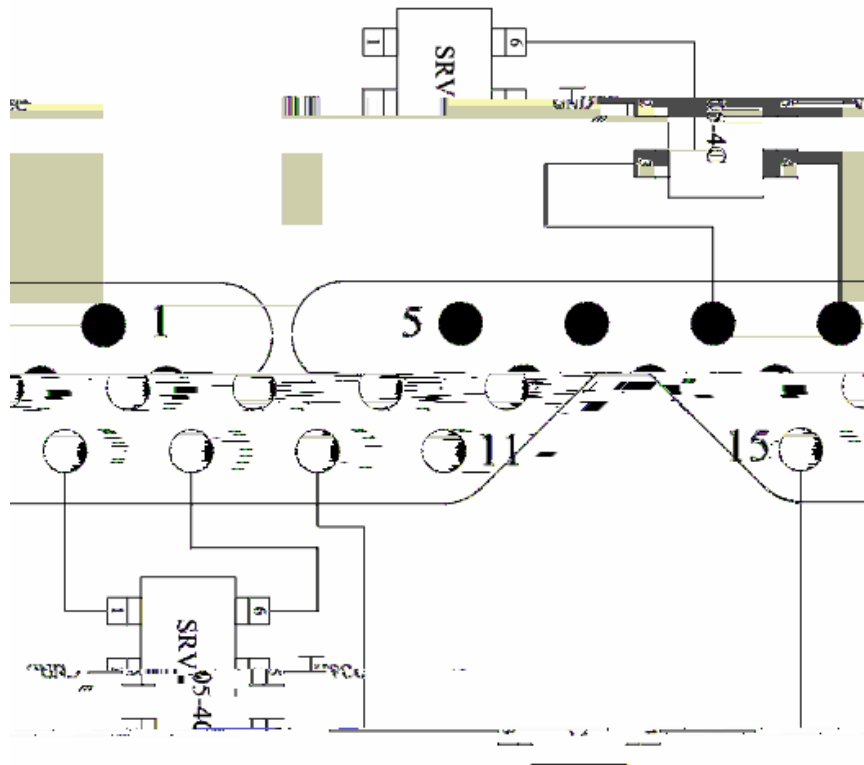
FIG.8: Clamping voltage vs. peak pulse current (8/20μs)



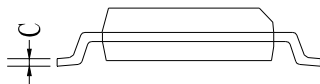
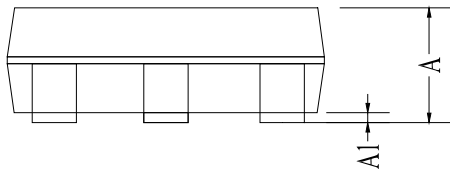
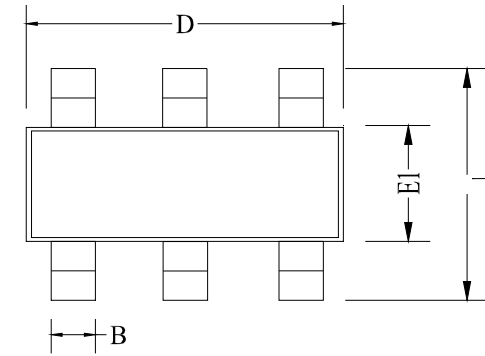
APPLICATION INFORMATION

Pin connection in PCB

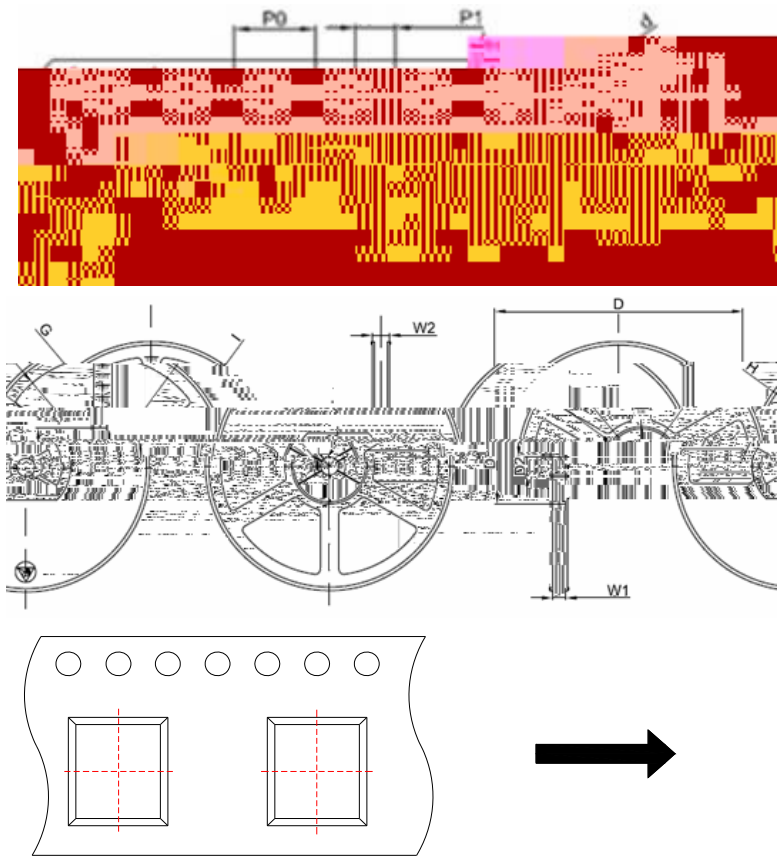
APPLICATION INFORMATION



PACKAGE MECHANICAL DATA



TAPE AND REEL SPECIFICATION SOT23 6L



ORDERING INFORMATION

MARKING CODE

