



FEATURES:

- ±
- ±
- ±
- ±
- ±
- ±
- ±
- ±
- ±

MAIN APPLICATIONS

- ±
-

ABSOLUTE MAXIMUM RATINGS

Parameter	Symbol	Value	Unit
	μ		

ELECTRICAL CHARACTERISTICS

Parameter	Symbol	Conditions	Min	Typ	Max	Unit
						μ

RATINGS AND V I CHARACTERISTICS CURVES

**FIG.1:V- I curve characteristics
(Uni-directional)**

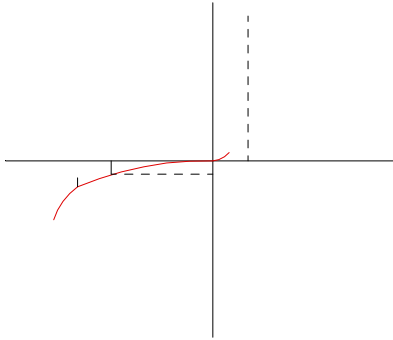
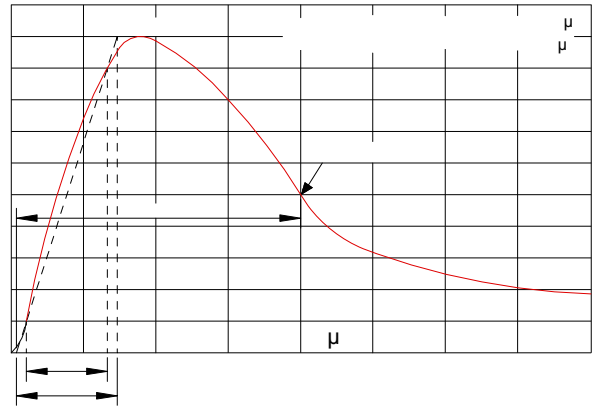
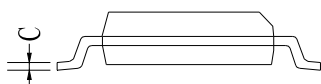
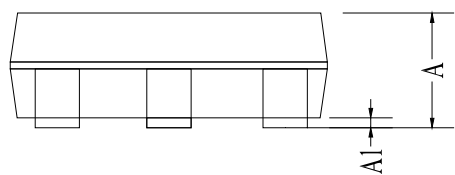
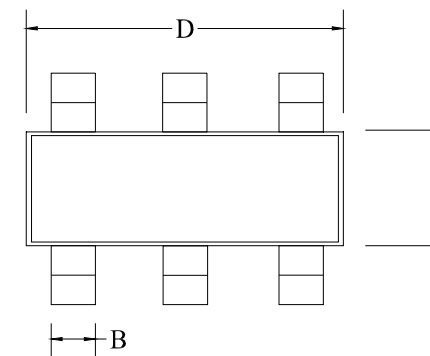


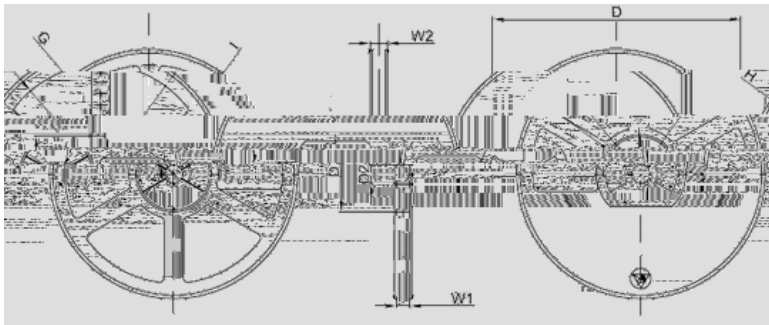
FIG.2: Pulse waveform μ



PACKAGE MECHANICAL DATA



TAPE AND REEL SPECIFICATION SOT23 6L



ORDERING INFORMATION

MARKING CODE

