



FEATURES

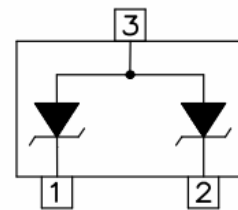
- 350 watts peak pulse power per line ($t_P=8/20\mu s$)
- Protects two I/O lines with uni-directional
- Low clamping voltage
- Working voltage: 5V
- Low leakage current
- RoHS compliant



SOT-23

MAIN APPLICATIONS

- RS-232, RS-422 & RS-485
- Servers, notebook, and desktop
- Cellular handsets and accessories
- Control & monitoring systems
- Portable electronics
- Wireless bus protection
- Set-top box



Pin Configuration

PROTECTION SOLUTION TO MEET

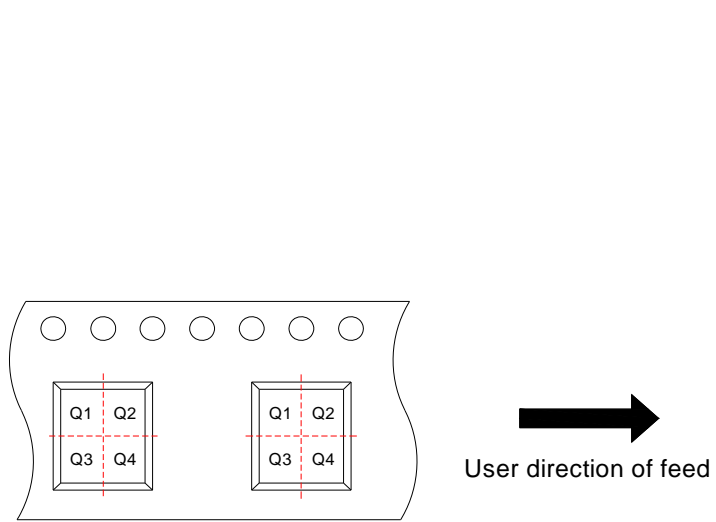
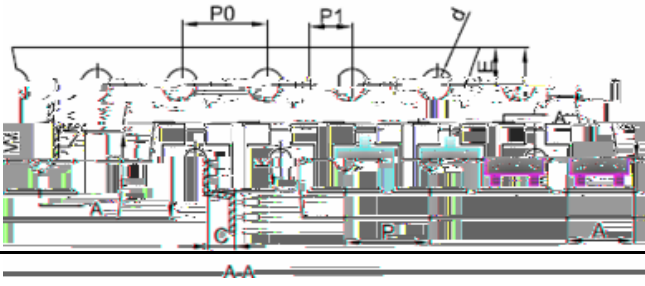
- IEC61000-4-2 (ESD) $\pm 30kV$ (air), $\pm 30kV$ (contact)
- IEC61000-4-4 (EFT) 40A (5/50ns)
- IEC61000-4-5 (lightning) 18A (8/20 μs)

MECHANICAL CHARACTERISTICS

- SOT-23 package
- Molding compound flammability rating: UL 94V-0
- Quantity per reel: 3,000pcs
- Reel size: 7 inch
- Lead finish: lead free
- Marking code: 5M2

JEU05T2B TVS Diode Array

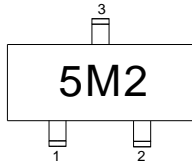
TAPE AND REEL SPECIFICATION SOT 23



Pin 1 quadrant: Q3

ORDERING INFORMATION

MARKING CODE

Part Number	Marking Code
JEU05T2B	

JieJie products are not designed for, and shall not be used for, any purpose (including, without limitation, automotive, military, aerospace, medical, life-saving, life-sustaining or nuclear facility applications, devices intended for surgical implant into the body, or any other application in which the failure or lack of desired operation of the product may result in personal injury, death, or property damage) other than those expressly set forth in applicable JieJie product documentation. Warrantienoq whidM ' Â

d -