





**ABSOLUTE MAXIMUM RATINGS** ( $T_A=25^\circ\text{C}$ , RH=45%-75%, unless otherwise noted)

Peak pulse power dissipation at 8/20 $\mu\text{s}$ waveform	$P_{PP}$	350	W
ESD per IEC 61000-4-2 (Air) ESD per IEC 61000-4-2 (Contact)	$V_{ESD}$	+/- 30 +/- 30	kV
Lead soldering temperature	$T_L$	260 (10 sec.)	
Operating junction temperature range	$T_J$	-55 to +150	
Storage temperature range	$T_{STG}$	-55 to +150	

**ELECTRICAL CHARACTERISTICS** ( $T_A=25^\circ\text{C}$ )

Reverse working voltage	$V_{RWM}$		5.0	V	
Reverse breakdown voltage	$V_{BR}$	$I_T=1\text{mA}$	6.0	V	
Reverse leakage current	$I_R$	$V_{RWM}=5\text{V}$	1	$\mu\text{A}$	
Clamping voltage	$V_C$	$I_{PP} = 1\text{A}, t_P=8/20\mu\text{s}$	9.8	V	
		$I_{PP} = 18\text{A}, t_P=8/20\mu\text{s}$	16.7	V	
Junction capacitance	$C_J$	$V_{RWM}=0\text{V}, f=1\text{MHz}$	150	180	pF

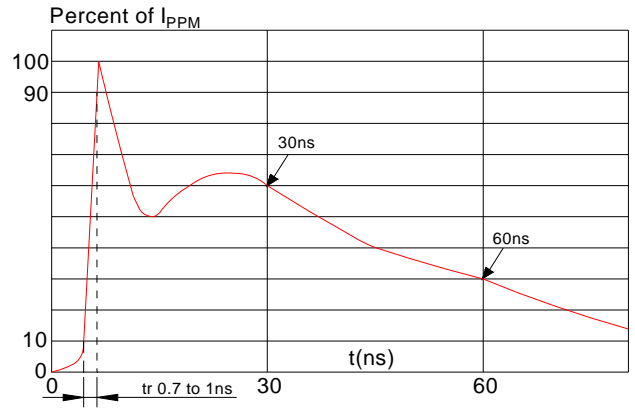
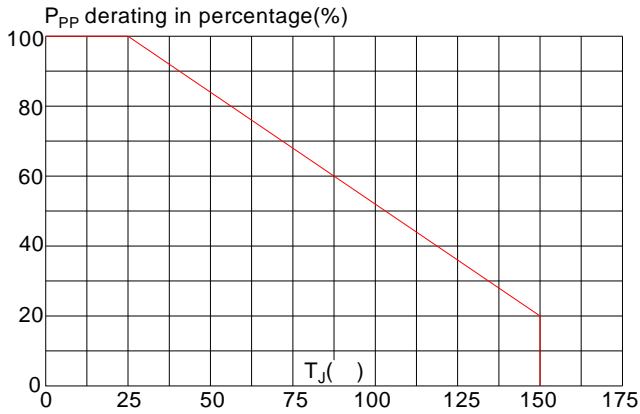
Surge waveform: 8/20 $\mu\text{s}$

$C_J$  measured @  $V_{RWM}=0\text{V}, 1\text{MHz}$  (pin1 to pin3, pin2 to pin3)

**RATINGS AND V I CHARACTERISTICS CURVES** ( $T_A=25^\circ\text{C}$ , unless otherwise noted)

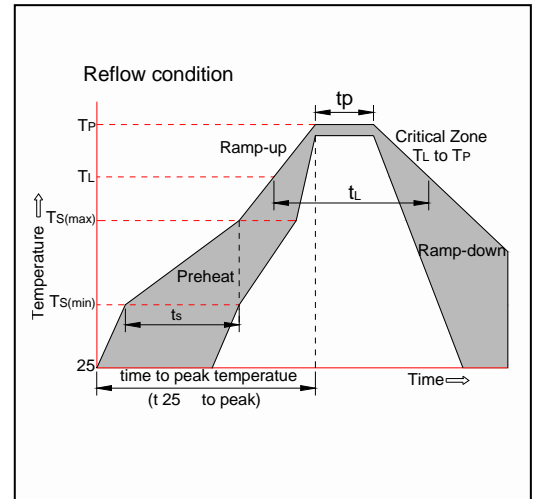


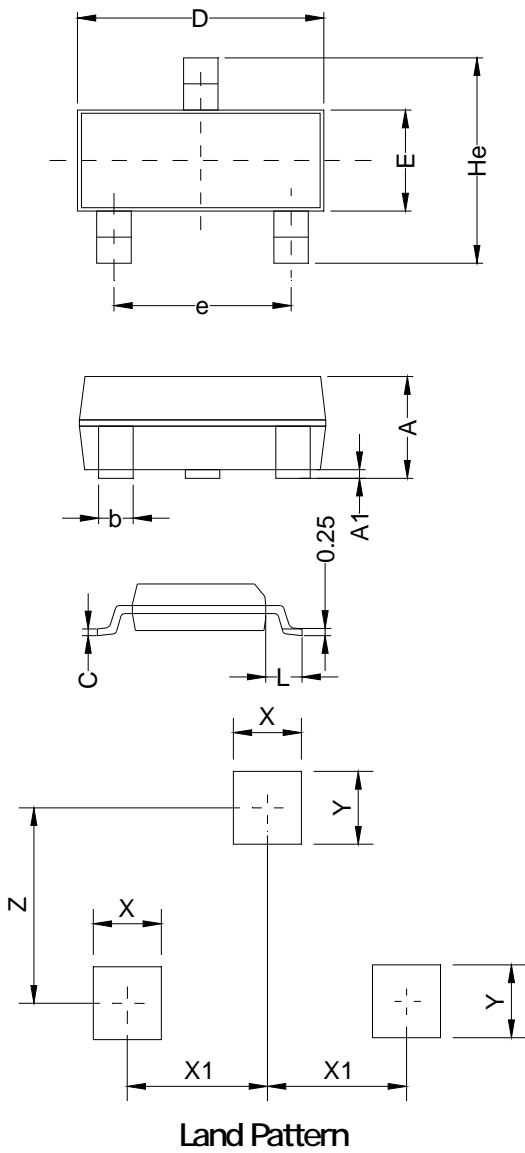
(30kV contact)



**SOLDERING PARAMETERS**

Reflow Condition		Pb-Free assembly (see figure at right)
Pre Heat	-Temperature Min ( $T_{s(min)}$ )	+150
	-Temperature Max( $T_{s(max)}$ )	+200
	-Time (Min to Max) ( $t_s$ )	60-180 secs.
Average ramp up rate (Liquidus Temp ( $T_L$ ) to peak)		3 /sec. Max
$T_{s(max)}$ to $T_L$ - Ramp-up Rate		3 /sec. Max
Reflow	-Temperature( $T_L$ )(Liquidus)	+217
	-Temperature( $t_L$ )	60-150 secs.
Peak Temp ( $T_p$ )		+260(+0/-5)
Time within 5 of actual Peak Temp ( $t_p$ )		20-40secs.
Ramp-down Rate		6 /sec. Max
Time 25 to Peak Temp ( $T_p$ )		8 min. Max
Do not exceed		+260

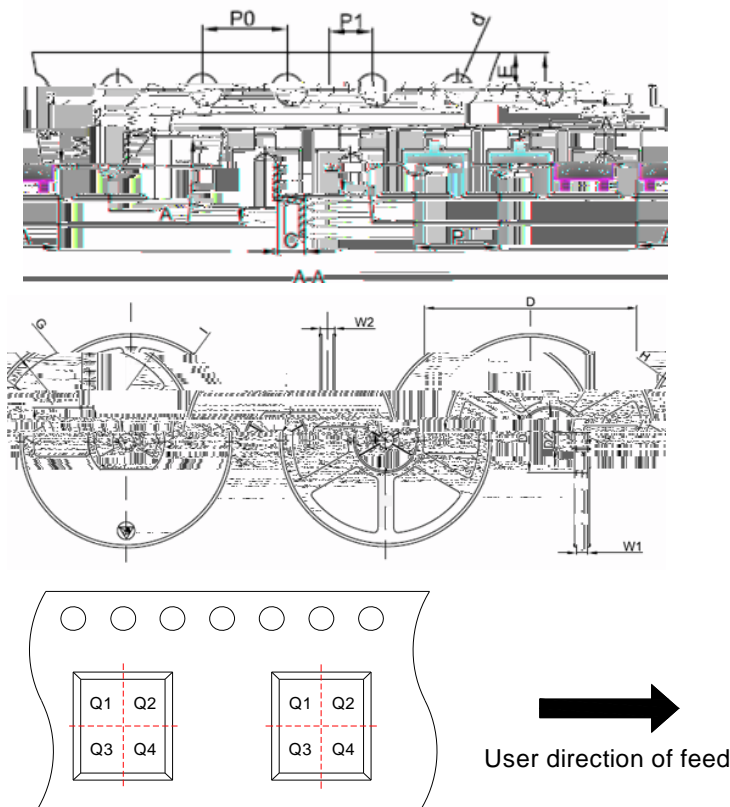




A	0.90	1.063	1.15	0.035	0.042	0.045
A1	0.00	0.075	0.14	0.000	0.003	0.006
b	0.30	0.40	0.50	0.012	0.016	0.020
C	0.07	0.10	0.15	0.003	0.004	0.006
D	2.80	2.90	3.00	0.110	0.114	0.118
e	1.80	1.90	2.00	0.071	0.075	0.079
E	1.20	1.30	1.40	0.047	0.051	0.055
L	0.55REF			0.022REF		
He	2.25	2.40	2.55	0.089	0.094	0.100
X	0.80			0.031		
X1	0.95			0.037		
Y	0.80			0.031		
Z	2.02			0.080		



TAPE AND REEL SPECIFICATION SOT 23



Pin 1 quadrant: Q3

Packaging Description:

SOT-23 parts are shipped in tape. The carrier tape is made from a dissipative(carbon filled) polycarbonate resin. The cover tape is a multilayer film(heat activated adhesive in nature)primarily composed of polyester film, adhesive layer, sealant, and anti-static sprayed agent. These reeled parts in standard option are shipped with 3,000units per 7" or 17.8cm diameter reel. The reels are clear in color and made of polystyrene plastic(anti-static coated).

A	3.15	0.124
B	2.77	0.109
C	1.22	0.048
d	1.50	0.059
E	1.75	0.069
F	3.50	0.138
P0	4.00	0.157
P	4.00	0.157
P1	2.00	0.079
W	8.00	0.315
D	178	7.008
D1	54.40	2.142
D2	13.00	0.512
G	R78.00	R3.071
H	R25.60	R1.008
I	R6.50	R0.256
W1	9.50	0.374
W2	12.30	0.484

ORDERING INFORMATION

PART No.	PACKAGE TYPE	QUANTITY(PCS) REEL	DESCRIPTION
JEU05T2B-AU	SOT-23	3,000	7 inch reel pack



MARKING CODE

Part Number	Marking Code
JEU05T2B-AU	