



JEB12T2B



ABSOLUTE MAXIMUM RATINGS (T_{AA})

FIG.3: Pulse derating curve

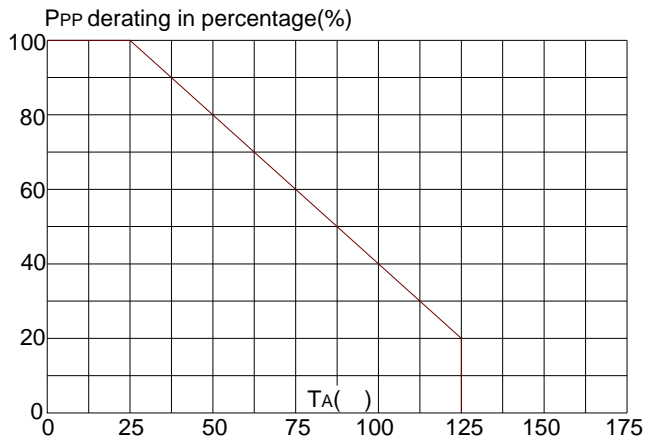
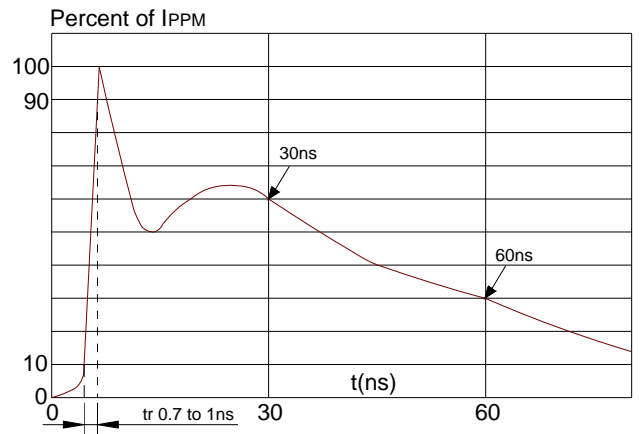


FIG.4: ESD clamping (30kV contact)

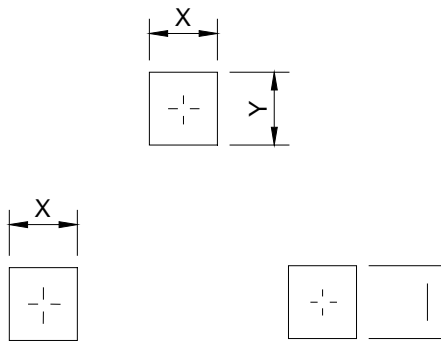


SOLDERING PARAMETERS

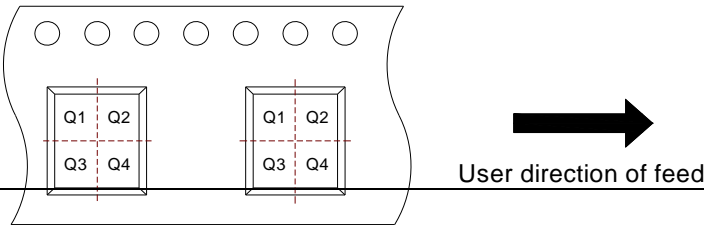
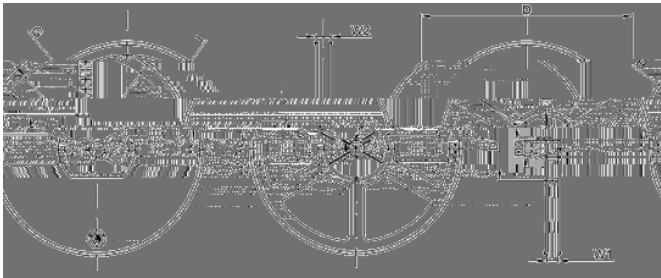
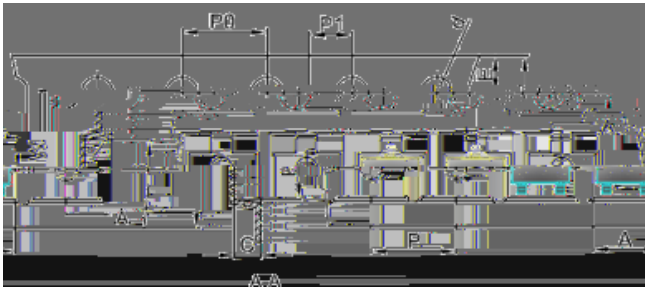
Reflow Condition		Pb-Free assembly (see figure at right)
Pre Heat	-Temperature Min (T _{s(min)})	+150
	-Temperature Max(T _{s(max)})	+200
	-Time (Min to Max) (ts)	60-180 secs.

Average ramp up rate (Liquidus Temp

PACKAGE MECHANICAL DATA



TAPE AND REEL SPECIFICATION SOT 23



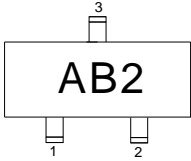
Pin 1 quadrant: Q3

Symbol	Millimeters	Inches

ORDERING INFORMATION

PART No.	PACKAGE TYPE	QUANTITY(PCS) REEL	DESCRIPTION
JEB12T2B	SOT-23	3,000	7 inch reel pack

MARKING CODE

Part Number	Marking Code
JEB12T2B	

Information furnished in this document is believed to be accurate and reliable. However, Jiangsu JieJie Microelectronics Co.,Ltd assumes no responsibility for the consequences of use without consideration for such information nor use beyond it.

Information mentioned in this document is subject to change without notice, apart from that when an agreement is signed, Jiangsu JieJie complies with the agreement.

Products and information provided in this document have no infringement of patents. Jiangsu JieJie assumes no responsibility for any infringement of other rights of third parties which may result from the use of such products and information.

This document is the 1.5th version which is made in 10-Dec.-2021. This document supersedes and replaces all information previously supplied.

 is a registered trademark of Jiangsu JieJie Microelectronics Co.,Ltd.

Copyright ©2021 Jiangsu JieJie Microelectronics Co.,Ltd. Printed All rights reserved.