



## FEATURES

- 325 watts peak pulse power per line ( $t_P=8/20\mu s$ )
- Protects two lines
- Low clamping voltage
- Low capacitance
-



ABSOLUTE MAXIMUM RATINGS

RATINGS AND CHARACTERISTIC CURVES (TA=25°C, unless otherwise noted)

FIG.1: V - I curve characteristics (Bi-directional)

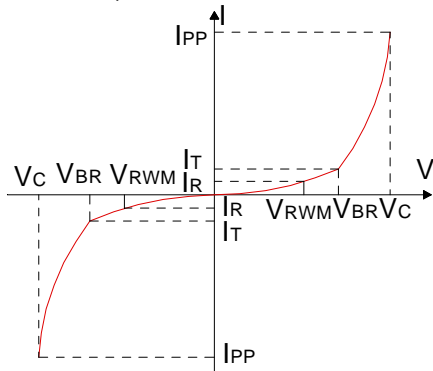


FIG.2: Pulse waveform (8/20µs)

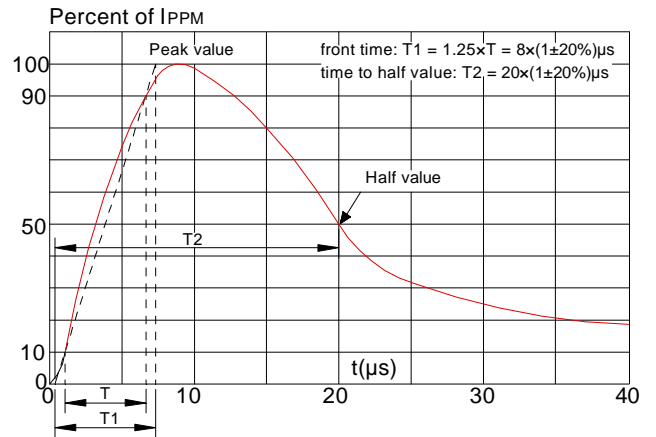


FIG.3: Pulse derating curve

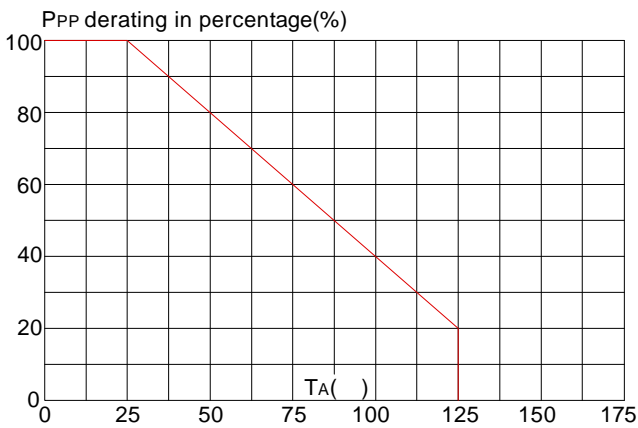
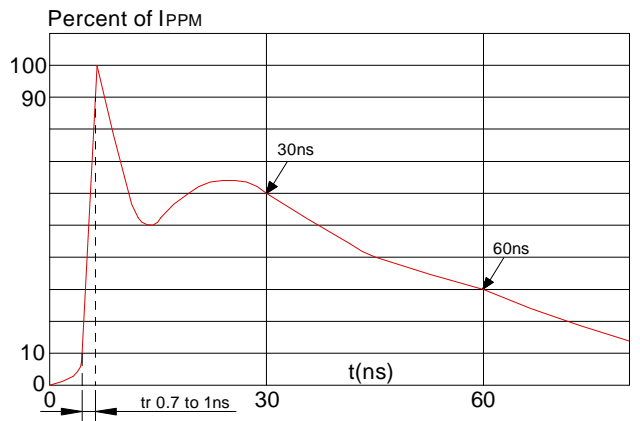


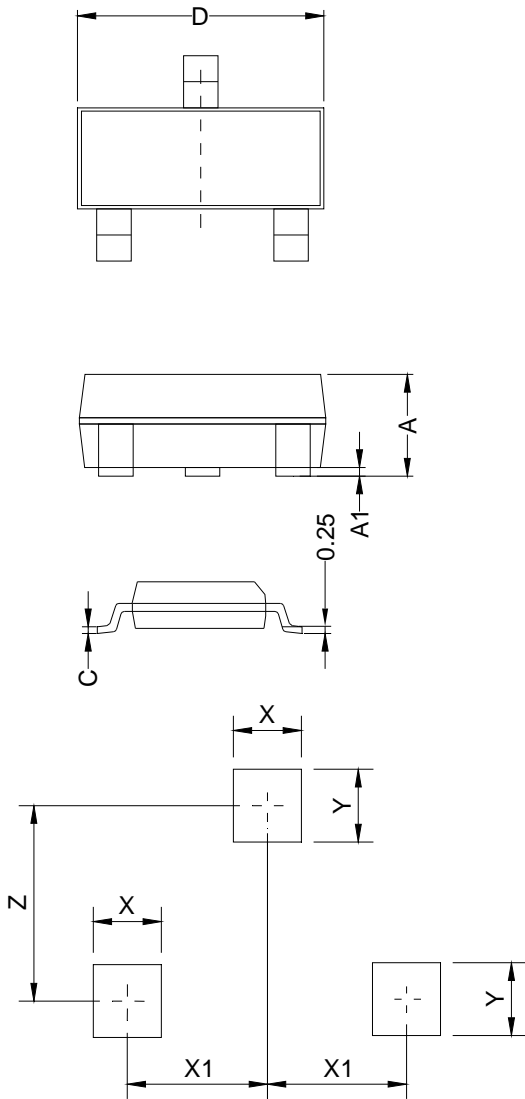
FIG.4: ESD clamping (30KV contact)



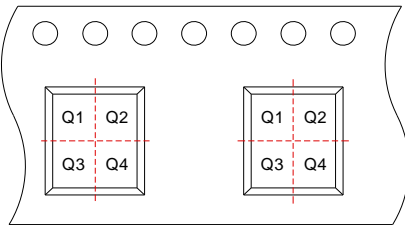
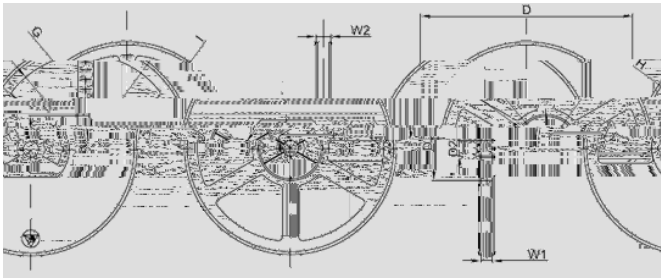
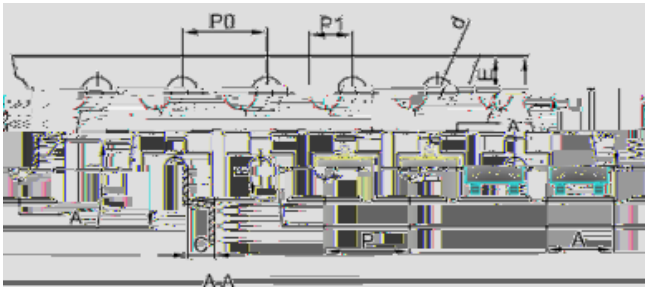
SOLDERING PARAMETERS

Reflow Condition		Pb-Free assembly (see figure at right)
Pre Heat	-Temperature Min (Ts(min))	+150
	-Temperature Max(Ts(max))	+200
	-Time (Min to Max) (ts)	60-180 secs.
Average ramp up rate (Liquidus Temp (TL)to peak)		3 /sec. Max
Ts(max) to TL - Ramp-up Rate		3 /sec. Max
Reflow	-Temperature(TL)(Liquidus)	+217
	-Temperature(tL)	60-150 secs.
Peak Temp (Tp)		+260(+0/-5)

PACKAGE MECHANICAL DATA



TAPE AND REEL SPECIFICATION SOT-23



Pin 1 quadrant: Q3

Packaging Description:

SOT-23 parts are shipped in tape. The carrier tape is made from a dissipative(carbon filled) polycarbonate

Symbol	Millimeter	Inches
	Typ.	Typ.
A	3.15	0.124
B	2.77	0.109
C	1.22	0.048
d	1.50	0.059
E	1.75	0.069
F	3.50	0.138
P0	4.00	0.157
P	4.00	0.157
P1	2.00	0.079
W	8.00	0.315
D	178	7.008
D1	54.40	2.142
D2	13.00	0.512
G	R78.00	R3.071
H	R25.60	R1.008
I	R6.50	R0.256
W1	9.50	0.374
W2	12.30	0.484

ORDERING INFORMATION

PART No.	PACKAGE TYPE	QUANTITY(PCS) REEL	DESCRIPTION
JEB1236M	SOT-23	3,000	7 inch reel pack

