



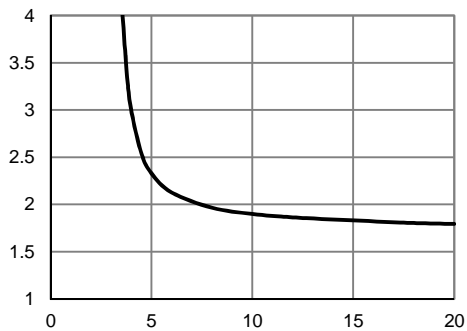
- Ultra-low  $R_{DS(ON)}$
- Low Gate Charge
- 100% UIS Tested, 100%  $R_g$  Tested
- Pb-free Lead Plating
- Halogen-free and RoHS-compliant
- AEC-Q101 Qualified for Automotive Applications

$V_{DS}$	40	V
$V_{GS(th)}$	1.5	V
$I_D$ (@ $V_{GS} = 10V$ ) <sup>(1)</sup>	211	A
$R_{DS(ON)}$ (@ $V_{GS} = 10V$ )	1.9	m
$R_{DS(ON)}$ (@ $V_{GS} = 4.5V$ )	2.6	m

JMSL0402AKQ-13	TO-252-3L	3	SL0402AQ	1	-55 to 175	13-inch Reel	2500
----------------	-----------	---	----------	---	------------	--------------	------

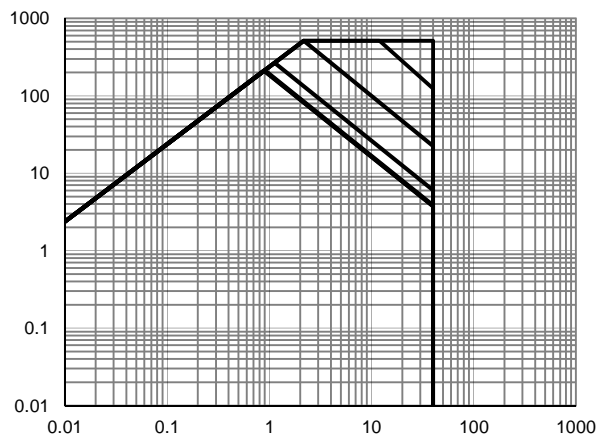
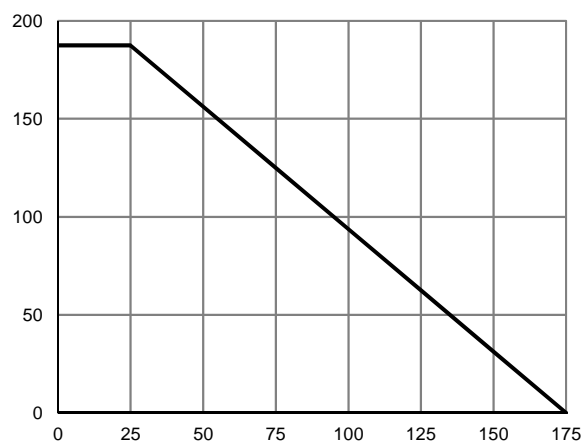
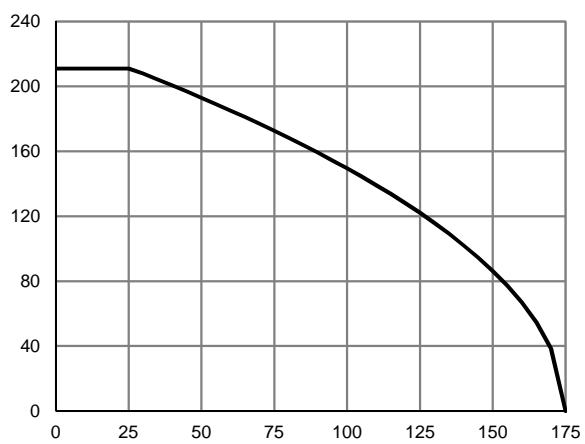
(@  $T_A = 25^\circ C$  unless otherwise specified)

Drain-to-Source Voltage	$V_{DS}$	40	V
Gate-to-Source Voltage	$V_{GS}$	$\pm 20$	V
Continuous Drain Current <sup>(1)</sup>	$T_C = 25^\circ C$	211	A
	$T_C = 100^\circ C$	148	
Pulsed Drain Current <sup>(2)</sup>	$I_{DM}$	517	A
Avalanche Energy <sup>(3)</sup>	$E_{AS}$	338	mJ
Power Dissipation <sup>(4)</sup>	$T_C = 25^\circ C$	187	W
	$T_C = 100^\circ C$	93	
Junction & Storage Temperature Range	$T_J, T_{STG}$	-55 to 175	$^\circ C$

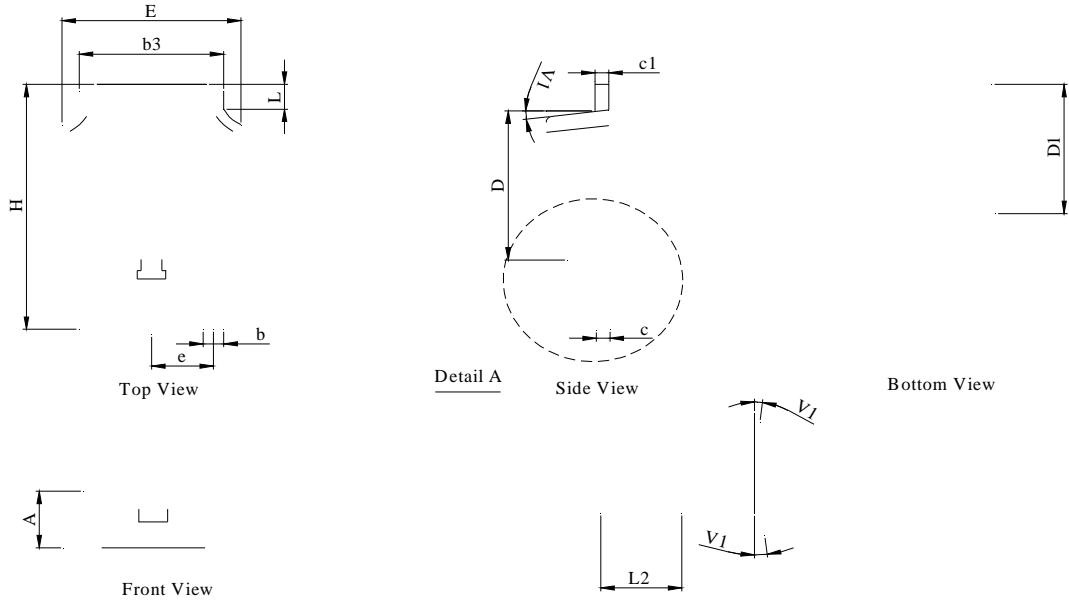


	$V_{(BR)DSS}$	40		V
			$V_{DS} = 32V, V_{GS} = 0V$	
			$T_J = 55^\circ C$	
	$I_{GSS}$			$\pm 100$ nA
Gate Threshold Voltage	$V_{GS(th)}$	1.2	1.5	2.5 V
			1.9	2.4 m
			2.6	3.4 m
	$g_{FS}$		87	S
	$V_{SD}$		0.66	1.0 V
	$I_S$			187 A
	$C_{iss}$		3252	pF
	$C_{oss}$		1888	pF
	$C_{rss}$		55	pF
	$R_g$		2.9	
	$Q_g$		50	nC
	$Q_g$		24	nC
	$Q_{gs}$		9.5	nC
	$Q_{gd}$		8.9	nC
	$t_{D(on)}$			









DIM.	MILLIMETER		
	MIN.	NOM.	MAX.
A	2.18	2.30	2.39
A1	0	-	0.13
b	0.64	0.76	0.89
c	0.40	0.50	0.61
c1	0.46	0.50	0.58
D	5.97	6.10	6.23
D1	5.05	--	--
E	6.35	6.60	6.73
E1	4.32	--	--
b3	5.21	5.38	5.55
e	2.29 BSC		
H	9.40	10.00	10.40
L	0.89	--	1.27
L2	1.40	--	1.78
V1	7° REF		
V2	0°	-	6°